



Part Number	Package	Application	Last Modified
861-RF881.5M-F	2.5 x 2.0 SMD	CDMA	Mar. 2, 2007

TYPE :  
 CDMA, Balanced RF-Rx SAW Filter

PART NUMBER :  
**861-RF881.5M-F**

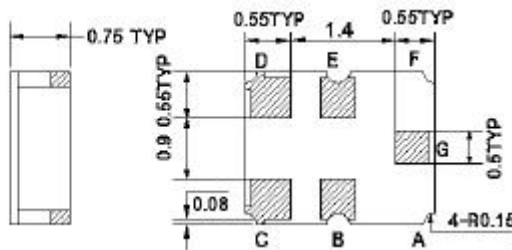
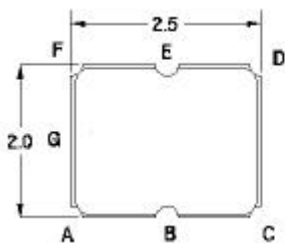


**OPERATING CONDITIONS / ELECTRICAL CHARACTERISTICS**

PARAMETERS	Condition	Minimum	Typical	Maximum	Units
Center Frequency (Fo)	-	-	881.5	-	MHz
Maximum Insertion Loss	869.0~ 894.0 MHz	-	2.3	3.0	dB
Attenuation:	100~ 824.0 MHz	40	45	-	dB
	824.0~849.0 MHz	35	44	-	
	914.0~ 970.0MHz	20	25	-	
	970.0~ 3000.0 MHz	40	55	-	
	3000~ 6000.0 MHz	35	50	-	
Output Amplitude Balance (I S31/S21 I)	-	-1.0	+/-0.3	1.0	dB
Output Phase Balance ( $\phi(S31)-\phi(S21)+180^\circ$ )	869.0~ 894.0 MHz	-10	+/-0.9	10	degree
Source Impedance (single ended)*	-	-	50	-	ohm
Load Impedance (single ended)*	-	-	200/18nH	-	ohm
VSWR	869.0~ 894.0 MHz	-	1.7	2.2	dBp-p
Maximum DC Voltage	-	-	-	5	V
Maximum Input Power (CDMA Signal)	(Source Imp. 50ohms)	-	-	0	dBm
Operating Temperature	-	-30	-	+85	°C

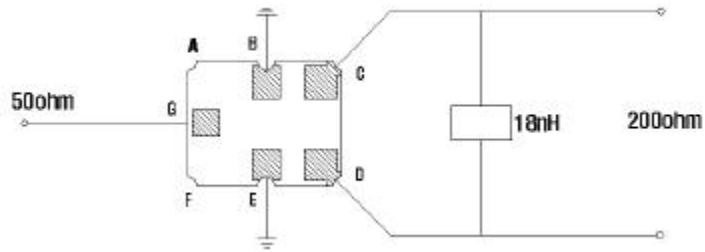
\* No Matching Network(Ref. Testing Enviroment Circuit as shown below)

**PACKAGE OUTLINE (mm)**

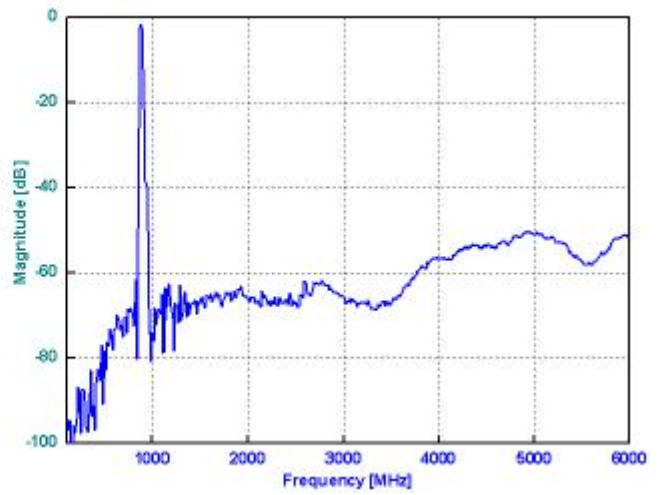
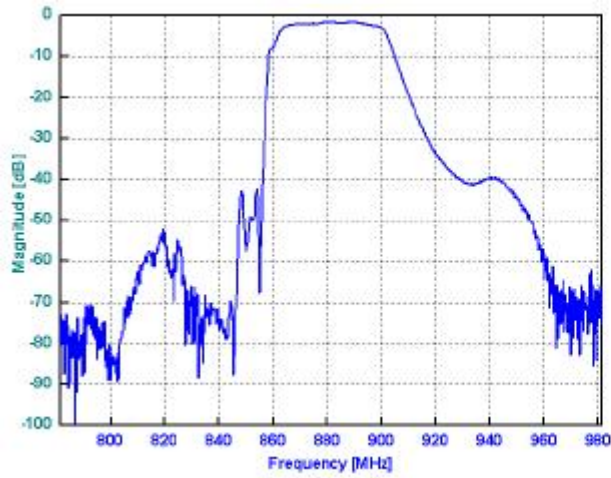


PIN LAYOUT	
A	-
B	Ground
C	Balance Out
D	Balance Out
E	Ground
F	-
G	In

**TEST FIXTURE**

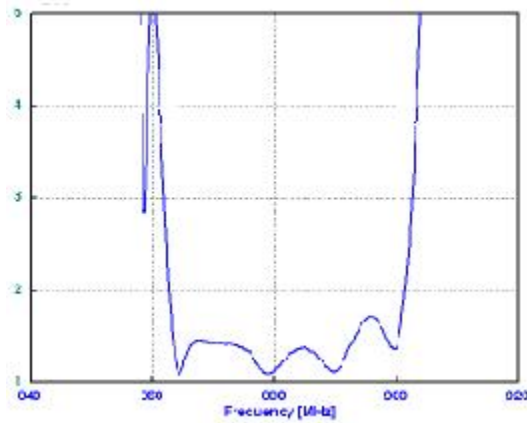


## FREQUENCY RESPONSE

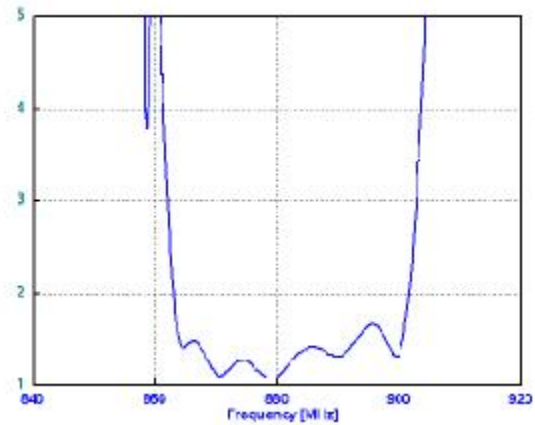


## VSWR

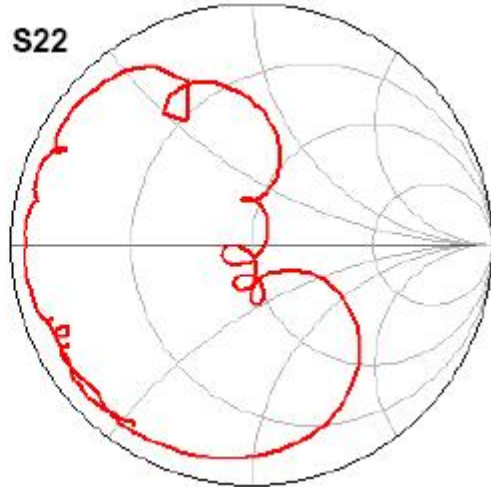
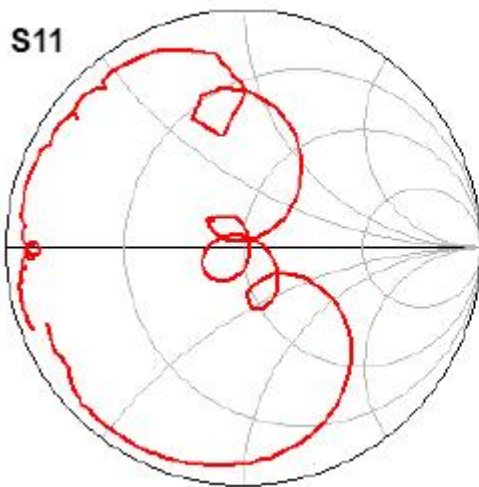
**S11**



**S22**



## SMITH CHART



**Oscilent Corporation** - CALL **949.252.0522**  
18195 East McDermott Street . Building D . Irvine . CA 92614 . USA  
Fax: 949.252.0599 . E-Mail: [Sales@Oscilent.com](mailto:Sales@Oscilent.com)

**Part No.:** **861-RF881.5M-F**