

# ISDN S INTERFACE ISOLATION TRANSFORMERS

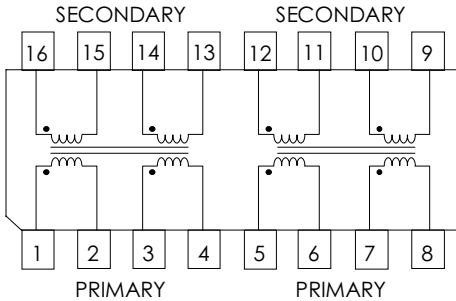
## FEATURES

- ① Designed for Isolation between Line Card and Terminal
- ② Meets Pulse Waveform Template of CCITT 1.430
- ③ Excellent Longitudinal Balance
- ④ 2000Vrms Minimum Isolation
- ⑤ Industry Standard Packages
- ⑥ Single or Dual Core Package

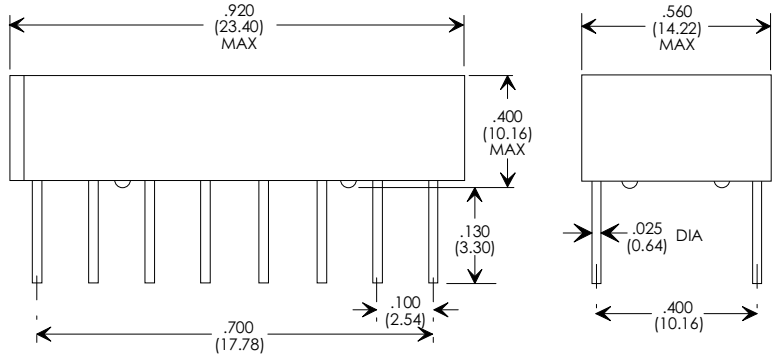
## ELECTRICAL SPECIFICATIONS AT 25°C PER CORE

PART NUMBER	TURNS RATIO (±2%)	PRIMARY OCL (mH Min.)	SECONDARY $L_L$ (μH Max.)	PRI-SEC Cw/w (pf Max.)	PRIMARY $C_p$ (pf Max.)	PRIMARY DCR (Ohms Max.)	SECONDARY DCR (Ohms Max.)	Package & Schematic
PM-IS01	1:1	22	5	100	40	2.4	2.4	A
PM-IS02	1:1.8	22	15	100	140	2.4	4.2	B
PM-IS03	1:2	22	15	100	80	2.4	4.0	A
PM-IS04	1:2.5	22	30	100	150	2.4	5.8	B
PM-IS05	1:2.5	22	25	100	50	2.4	5.8	A
PM-IS06	1:2	22	12	100	150	2.4	5.0	A
PM-IS07	1:1	22	5	100	40	2.4	2.4	C
PM-IS08	1:1.8	22	15	100	140	2.4	4.2	C
PM-IS09	1:2	22	15	100	80	2.4	4.0	C
PM-IS10	1:2.5	22	30	100	150	2.4	5.8	C
PM-IS11	1:2.5	22	25	100	50	2.4	5.8	C
PM-IS12	1:2	22	12	100	150	2.4	5.0	C

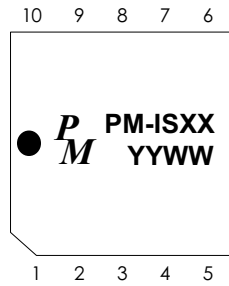
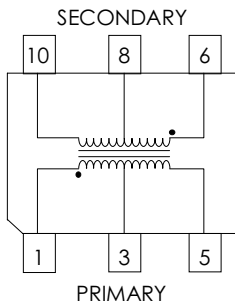
### DUAL CORE PACKAGE "C"



**NOTE FOR PIN-OUT "C"**  
 Primary: 1 to 4 & 5 to 8  
 Secondary: 16 to 13 & 12 to 9

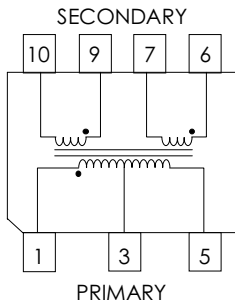


### SINGLE CORE PACKAGE "A"

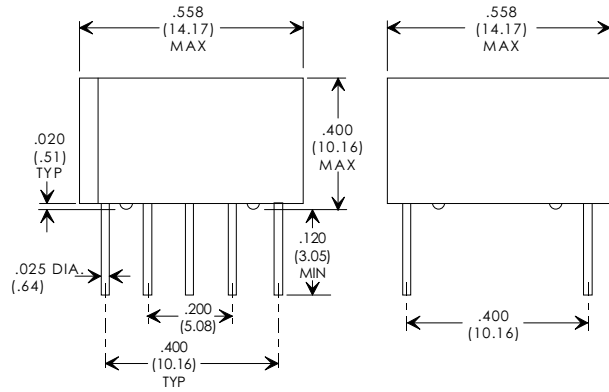


**NOTES:**  
 Unused Pins are omitted

### SINGLE CORE PACKAGE "B"



**NOTE FOR PIN-OUT "B"**  
 Primary: 1 to 3  
 Secondary: 4 to 7  
 Center tap is 6 connect to 5



Specifications subject to change without notice.