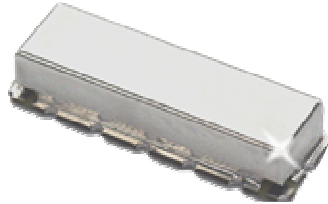


KR Electronics 2534 Bandpass Filter

General Description

KR 2534 is a 150 MHz surface mount bandpass filter. Other center frequencies and bandwidths available. Please consult the factory.

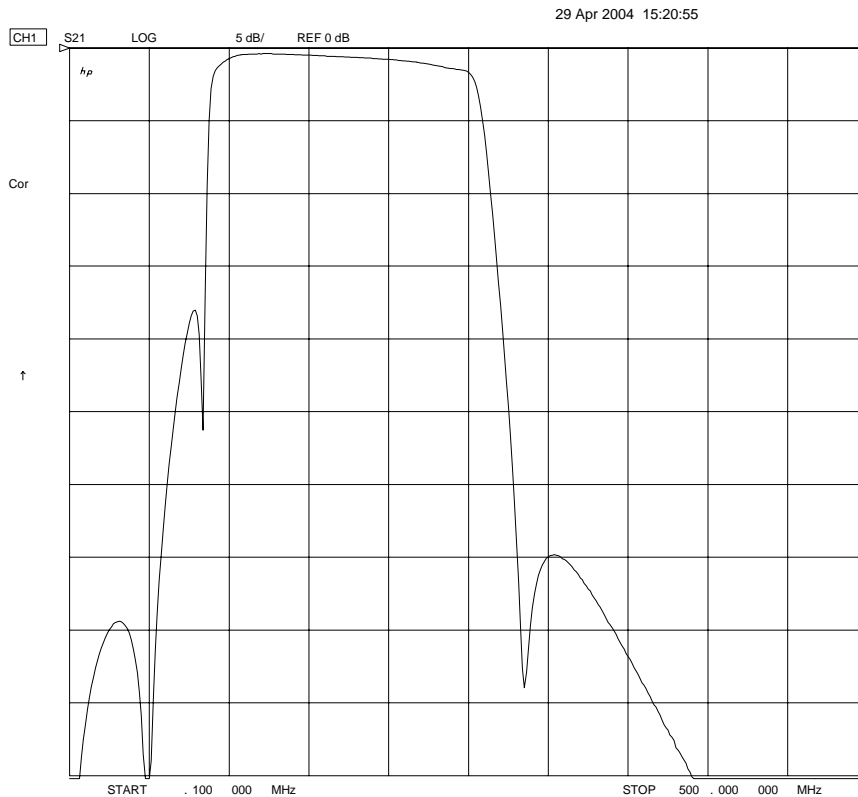


Features

- Surface Mount Package
- Custom Elliptic Type Design
- 50 Ω Source and Load

Typical Performance

Overall Response (10 dB/div)



KR Electronics, Inc.
91 Avenel Street
Avenel, NJ 07001

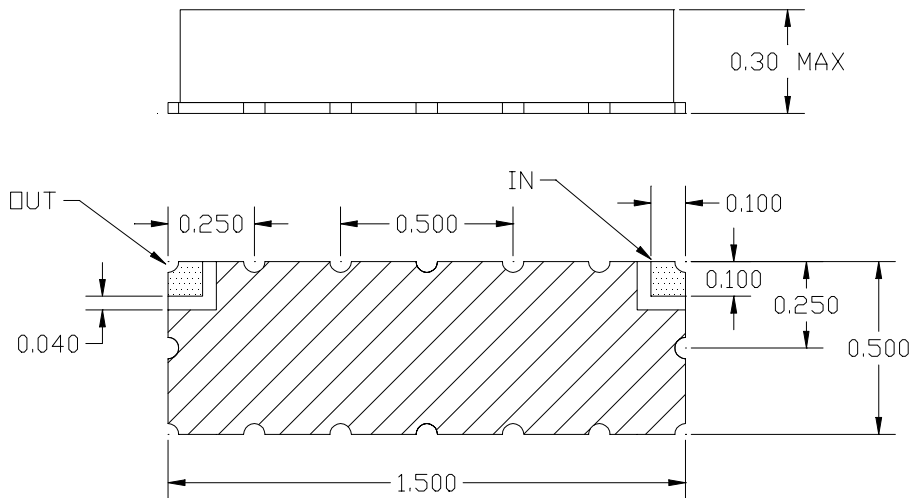
Web www.krfilters.com
Email sales@krfilters.com
Phone (732) 636-1900
Fax (732) 636-1982

KR 2534 Bandpass

Specifications

| Parameter | Specification | |
|--------------------------|-------------------------|--------------------------|
| Filter type | Bandpass | |
| Center Frequency | 150 MHz | |
| Insertion Loss | < 2 dB (0.5 dB typical) | |
| Specified Passband | 135 MHz to 165 MHz | |
| Passband Phase Linearity | < 2° | Phase matching available |
| 25 MHz & below | > 35 dB | |
| 85 MHz & below | > 10 dB | |
| 285 MHz | > 30 dB | |
| 435 MHz | > 50 dB | |
| Source and Load | 50 Ω | |

Physical Dimensions



Notes:

1. Surface mount package — Metal cover, open frame
2. Dimensions in inches
3. Use SN60 or SN63 solder during installation
4. If boards are cleaned after installation, units must be completely dried to remove any entrapped moisture that will effect electrical