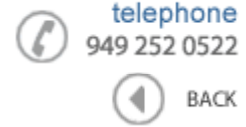




**Data Sheet**



Product Category: RF SAW Filter

Part Number	Package	Application	Last Modified
803-RF423.75M-A	3.8 x 3.8 SMD	CDMA450 Rx	Jan. 01, 2007

TYPE :  
CDMA450 (D-Band) RF-Rx SAW Filter



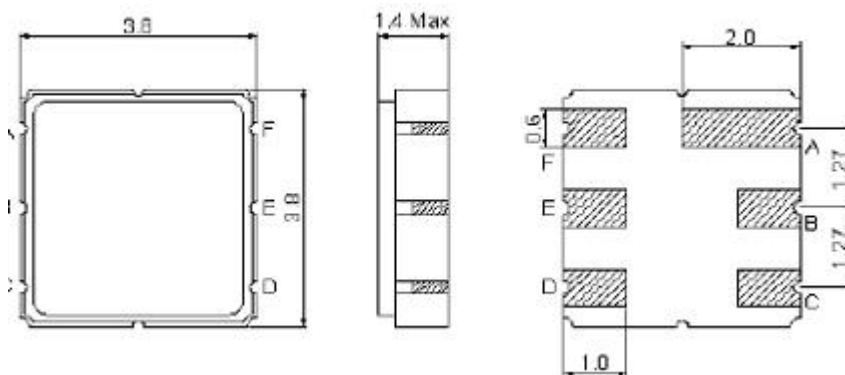
PART NUMBER :  
**803-RF423.75M-A**

**OPERATING CONDITIONS / ELECTRICAL CHARACTERISTICS**

PARAMETERS	Condition	Minimum	Typical	Maximum	Units
Center Frequency (Fo)	-	-	423.75	-	MHz
Maximum Insertion Loss	421.6 ~ 425.9 MHz	-	2.7	4.8	dB
Stop Band Attenuation:	0.3 ~ 411.6 MHz	40	48	-	dB
	411.6 ~ 415.9 MHz	35	47	-	
	442.0 ~ 600.0MHz	40	47	-	
	600.0 ~ 1200.0 MHz	30	40	-	
	1200.0~ 2000.0 MHz	20	35	-	
Source Impedance (single ended)*	-	-	50	-	ohm
Load Impedance (single ended)*	-	-	50	-	ohm
VSWR	421.6 ~ 425.9 MHz	-	1.5	2.0	-
Maximum Input Power	-	-	-	27	dBm
Operating Temperature	-	-30	-	+80	°C

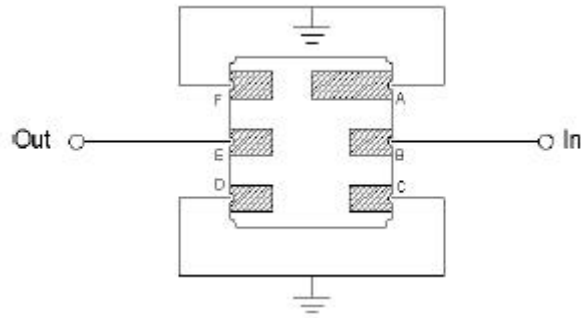
\* No Matching Network

**PACKAGE OUTLINE (mm)**



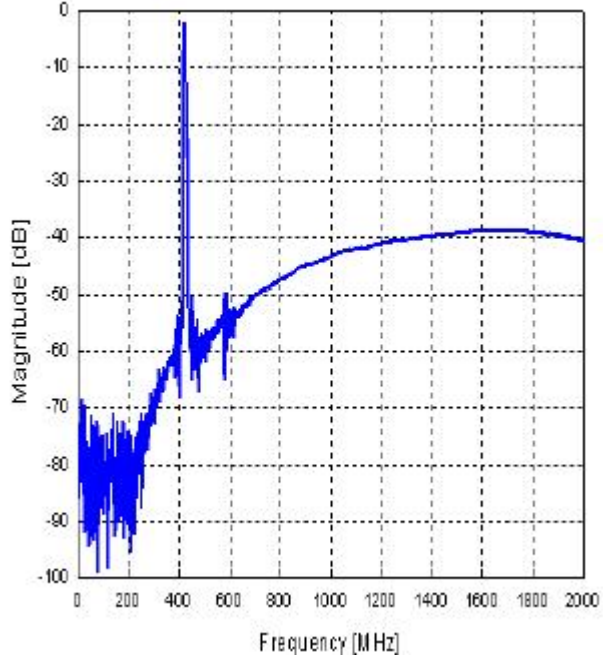
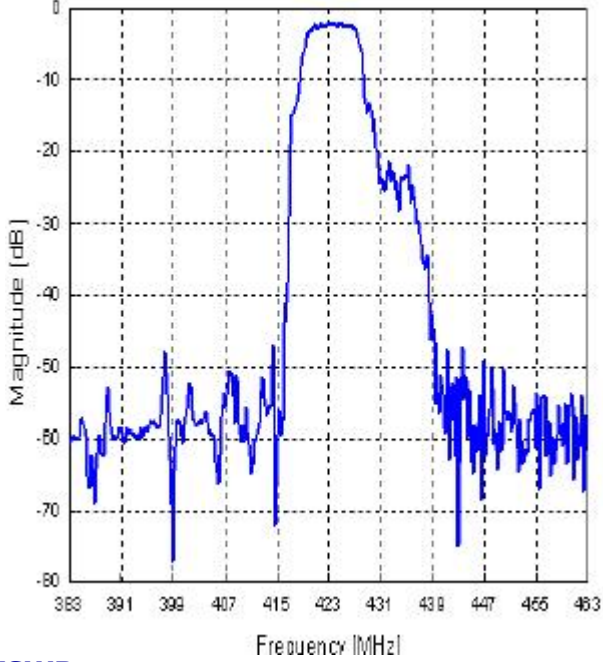
PIN LAYOUT	
A	Ground
B	In
C	Ground
D	Ground
E	Out
F	Ground

**TEST FIXTURE**

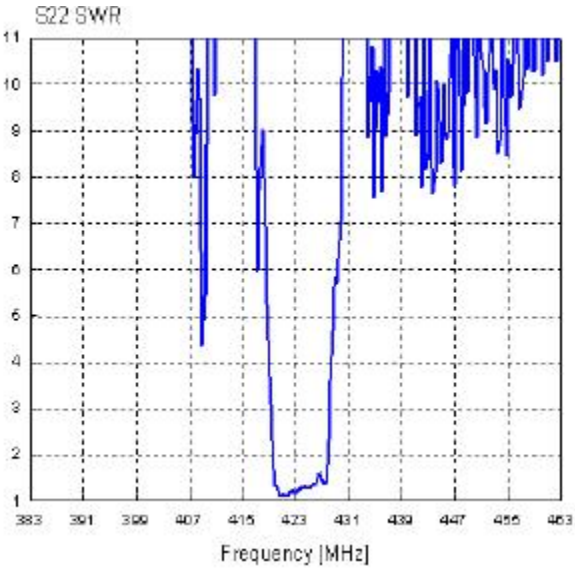
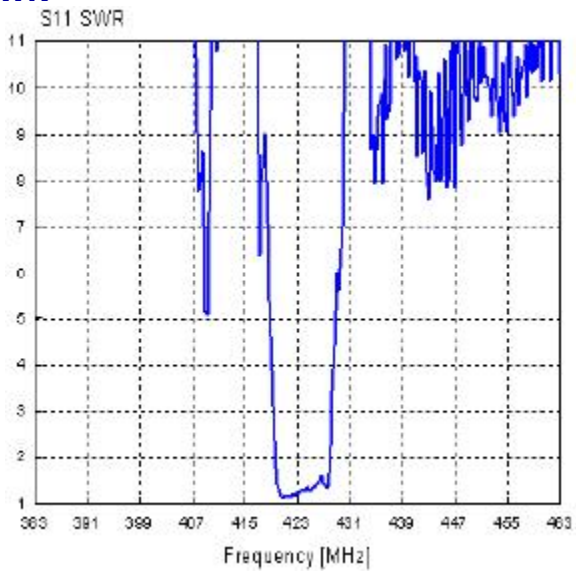


Source/ Load Impedance = 50 ohms

**FREQUENCY RESPONSE**

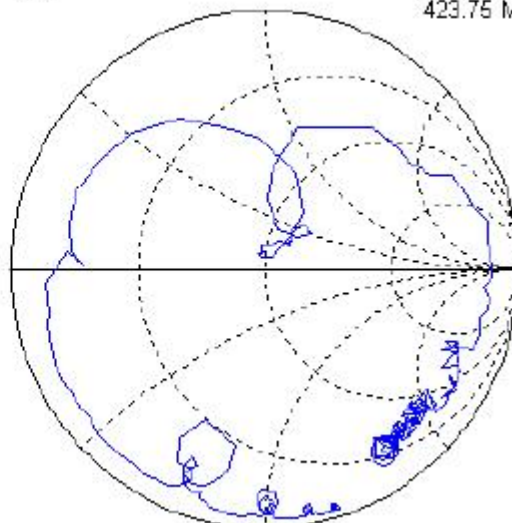
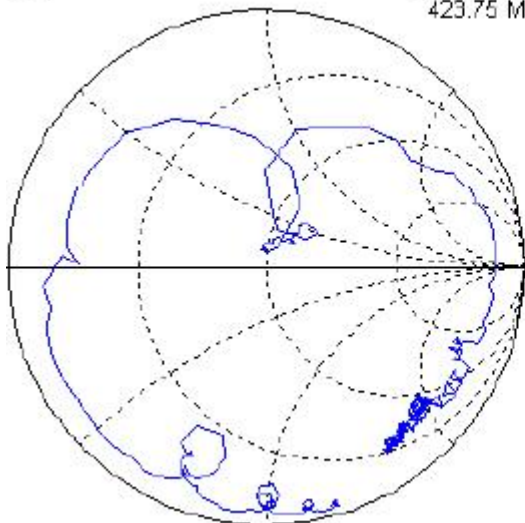


**VSWR**



**SMITH CHART**

S11

54.1556+j12.5068 S22  
423.75 MHz53.2483+j10.7862  
423.75 MHz**Oscilent Corporation** - CALL **949.252.0522**18195 East McDermott Street, Building D, Irvine, CA 92614, USA  
Fax: 949.252.0599, E-Mail: Sales@Oscilent.com**Part No.:** 803-RF423.75M-A