

# DCH3138 SERIES

## Regulated/Adjustable 10-20kV DC-DC HV Power Supply



### DESCRIPTION

High Voltage Power Solutions (HVPSI) new DCH3138 adjustable DC-DC power supply is designed for demanding laboratory and OEM applications. The DCH3138 features 10-20kV output voltage adjustment, 10,000:1 voltage sense, and relay contacts that open at 200uA. The unit is capable 4 watts output power. All High Voltage components are fully encapsulated in epoxy resin for protection against humidity and environment.

### FEATURES

- 24 VDC Input
- Output 10-20kV Adjustable
- Output Current 0-200uA
- Input Power 10W Max.
- 4 Watts Output
- Relay Contacts Open At 200uA
- 10,000:1 Voltage Sense
- Short-Circuit Protected
- Base-plate Mounting
- Low-EMI Sine-wave Topology
- Aluminum Enclosure
- Low Ripple

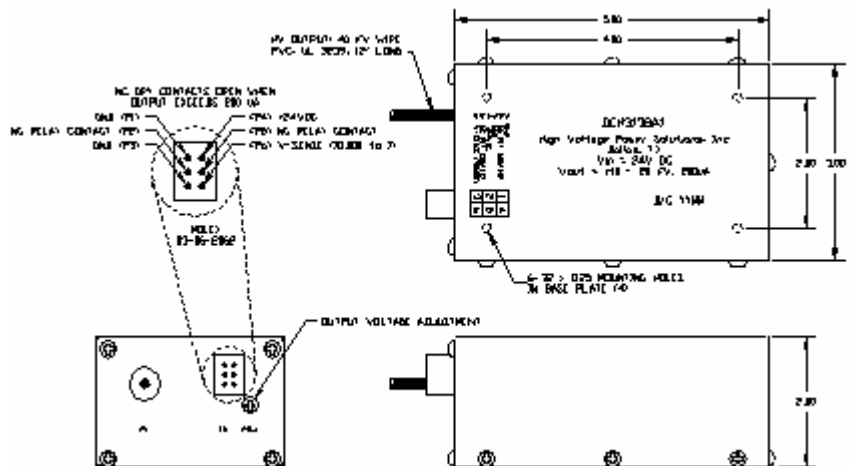
### APPLICATIONS

- Photomultipliers
- Ionizers
- CRT Grid Circuits
- Biasing
- Dielectric Testing
- Piezoelectric Drivers
- Electrostatic Chucks
- Sealing Applications
- Ink Jet Printers
- Photo Detectors

### MECHANICAL

- Dimensions 5.0" x 3.0" x 2.0"
- Molex 03-06-2062 Connector
- Weight: 26.0 Ounces
- Operating Temperature Range:  
-40°C to +70°C

MODEL	OUTPUT POLARITY	VOLTAGE RANGE	OUTPUT CURRENT
DCH3138P1	Positive	10 - 20kV	200uA



### GENERAL INFORMATION

Custom requirements are welcome. Modifications to existing products and completely new designs are a standard part of our business. Our extensive design inventory and the use of our CAD/CAM design and manufacture allows for prompt and cost competitive quotations as well as reliable prototyping capabilities. Please feel free to contact us to discuss your custom requirements.