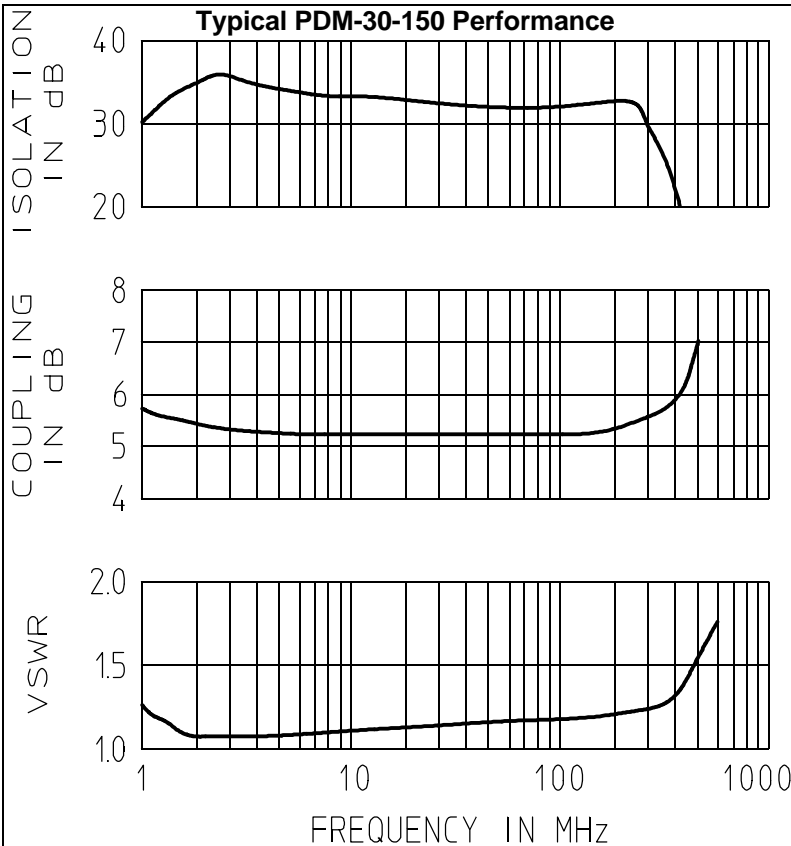


PRINCIPAL SPECIFICATIONS

Model Number	Freq. Range, MHz	Frequency Performance, MHz	Isolation, dB		Insertion Loss, dB		Phase Balance, °		Amplitude Bal., dB		VSWR (In/Output)	
			Min.	Typ.	Max.	Typ.	Max.	Typ.	Max.	Typ.	Max.	Typ.
PDM-30-50	1 - 100	1 - 100	30	33	0.6	0.3	2°	1°	0.2	0.1	1.3:1	1.25:1
PDM-30-150	1 - 300	2 - 200	27	33	1.0	0.6	3°	1°	0.3	0.1	1.3:1	1.2:1
		1 - 300	20	25	1.2	0.8	4°	2°	0.4	0.4	1.5:1	1.3:1
PDM-30-525	50 - 1000	100 - 500	25	30	1.0	0.6	6°	3°	0.5	0.3	1.3:1	1.2:1
		50 - 1000	20	25	2.0	1.5	8°	4°	0.8	0.5	1.6:1	1.4:1
PDM-30-1050	700 - 1400	700 - 1400	20	25	1.2	0.8	5°	3°	0.5	0.3	1.4:1	1.25:1
PDM-30-1100	100 - 2000	100 - 2000	18	20	2.2	1.5	10°	5°	0.7	0.5	1.5:1	1.3:1



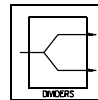
GENERAL SPECIFICATIONS

Coupling: - 4.8 dB nom.
 Impedance: 50 Ω nom.
 Internal Load Dissipation: 250 mW max.
 CW Power Input: 1 W max.
(When used as divider with 1.2:1 VSWR_{out})
 Connectors, SMA Female: to meet interface requirements of MIL-C-39012
 Weight, nominal: 2 oz. (57 g)
 Operating Temperature: - 55° to +85°C

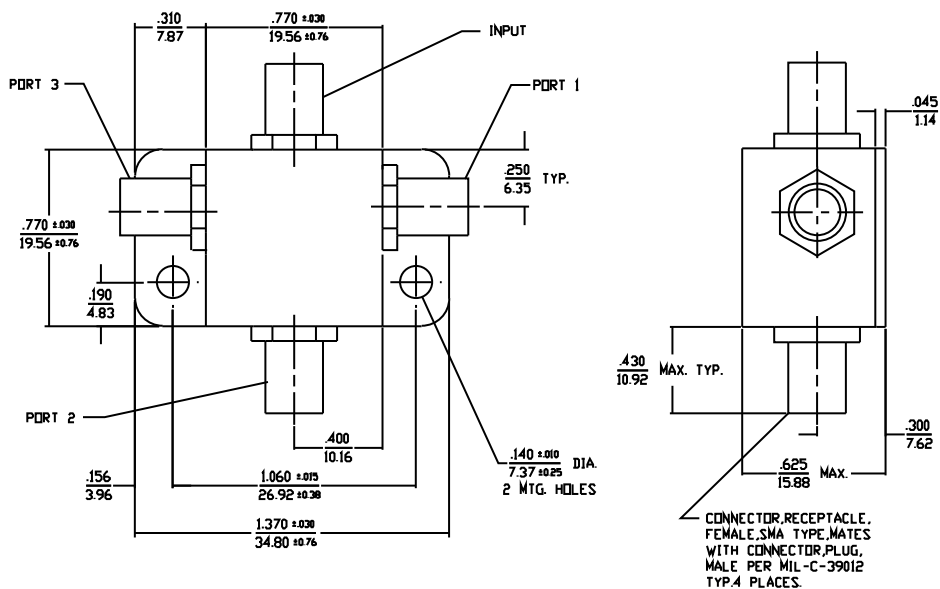
General Notes:

1. The PDM-30 series of 3-way In-Phase, Power Dividers/Combiners covers 1 to 2,000 MHz, using a special lumped element design to reduce size.
2. Similar units are available with up to sixteen output ports and with power capacity up to several kilowatts.

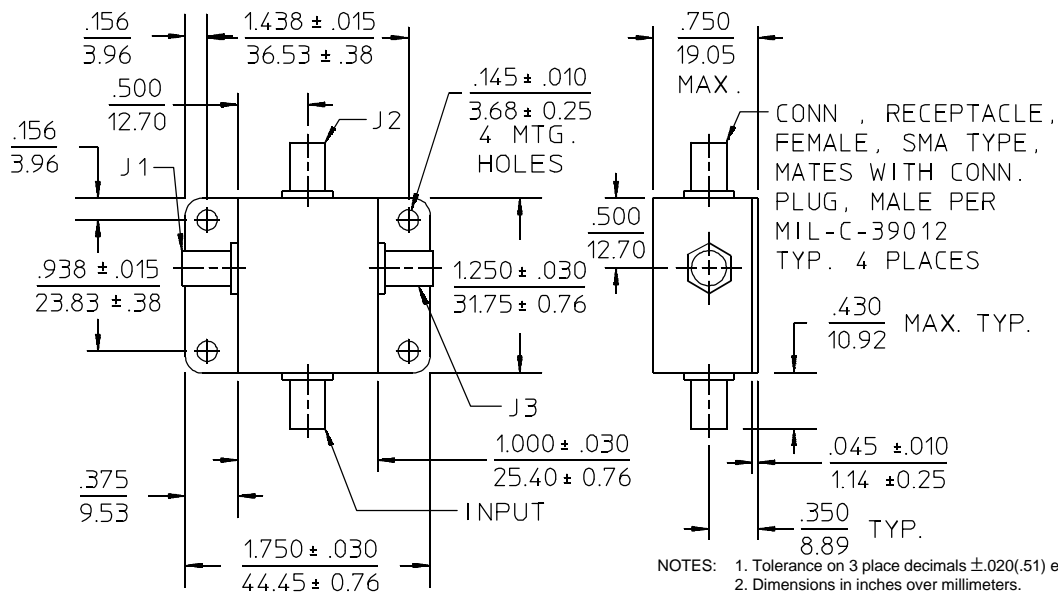
19Feb96



PDM-30-50



PDM-30-150/525/1050/1100



19Feb96