



12OPzV1500(2V1500Ah)



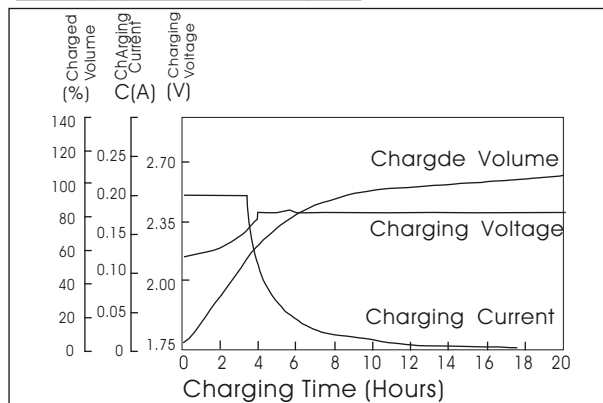
Specifications

Nominal Voltage		2 V
Rated capacity (10 hour rate)		1500Ah
Dimensions	Total Height	838 mm (33.0 Inches)
	Height	797mm (31.4inches)
	Length	275 mm(10.83 Inches)
	Width	210 mm (8.27inches)
Weight Approx		115Kg (253.0lbs)

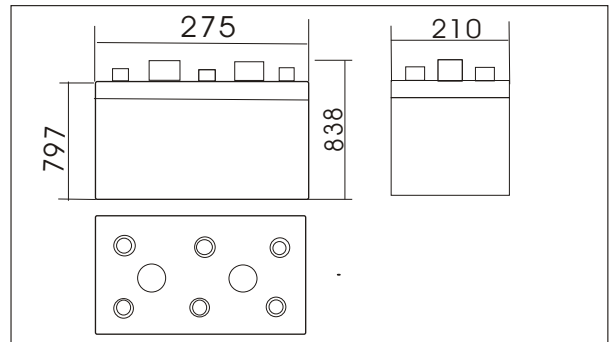
Characteristics

Capacity 25°C(77°F)	10 hourRate(150A) 1 hour rate(675A) 0.5 hour rate(1050A)	1500Ah 675Ah 525Ah
Capacity affected by Temperature (10hour rate)	40°C(104°F) 25°C(77°F) 0°C(32°F) -15°C(5°F)	102% 100% 85% 65%
Self-Discharge at 25°C(77°F)	Capacity after 3 month storage Capacity after 6 month storage Capacity after 12 month storage	91% 82% 64%
Terminal quantity	6	
Charge (constant Voltage)	Initial Charging Current less than 300.0A Voltage 2.25-2.40V	

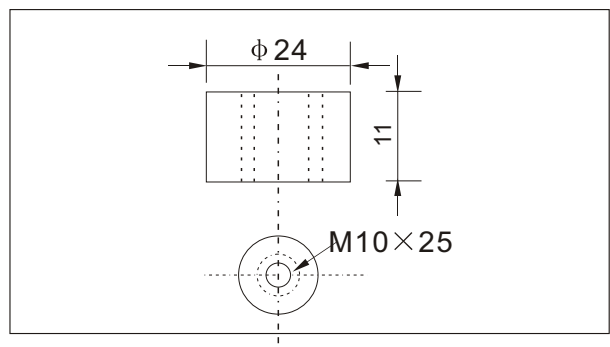
Charging characteristics(25°C)



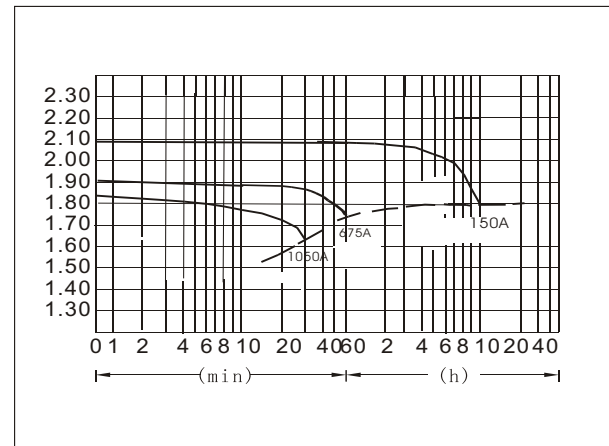
Outer dimensions (mm)



Terminal Type (mm)



Discharge Curves 25°C(77°F)



Cycling Curves

