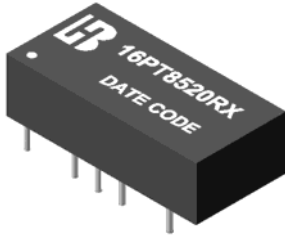


**10/100 BASE-T TRANSFORMER**

**P/N:16PT8520RX DATA SHEET**

**Feature**

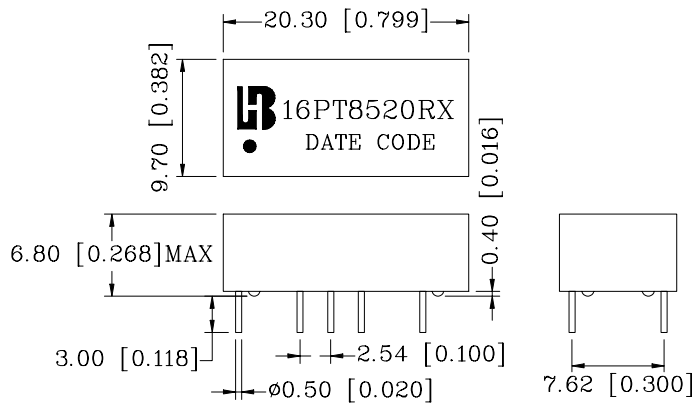
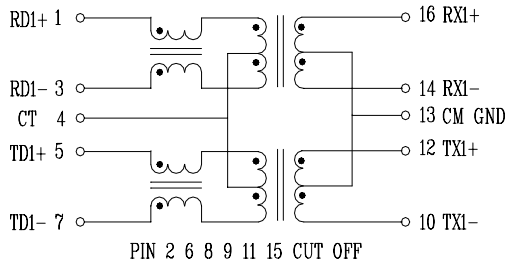


- Operating Temperature range: 0°C to +70°C.
- Storage temperature range: -25°C to +105°C.

Electrical Specifications @ 25°C										
Part Number	Turns Ratio (±5%)		OCL (uH Min) @ 100KHz/0.1Vrms with 8mA/DC Bias	C <sub>w/w</sub> (pF Max)	L.L (uH Max)	Rise Time (10-90%) nS TYP	HI-POT (Vrms)			
	TX	RX								
16PT8520RX	1CT:1CT	1CT:1CT	350	56	0.4	2.5	1500			
Continue										
Part Number	Insertion Loss (dB Max)	Return Loss (dB Min)					Cross talk (dB Min)	DCMR (dB Min) TX/RX		
		0.3-100 MHz	30MHz	40MHz	50MHz	60MHz			80MHz	0.3-100MHz
16PT8520RX	-1.15	-16	-14	-13.5	-13	-12	-35	-30		

**Schematic**

**Mechanical**



Units: mm[Inches]    Tolerances: xx.x0±0.25[0.010]  
 0.xx±0.05[0.002]