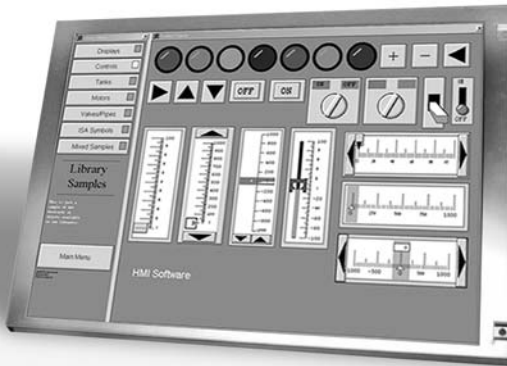


# AP-LKLH1041-01

Industrial Computing Platform Partner

Industrial Monitor kit 10.4" 1500 nits, TFT, DC, VGA, AV



## Features

- Wide Viewing Angle
- Fast Response Time
- High Contrast Ratio
- Very High Brightness
- Sunlight Readable

## Specifications

System	
Form Factor	Industrial Monitor kit
OS Support	MS DOS, Windows® 2000, Windows® XP
Display	
Size	10.4"
Resolutions	800 x 600
Type	TFT
Max. Colors	262K
Dot Size	0.264 x 0.264
Luminance	1500 nit
Contrast Ratio	500:1
Viewing Angle	120°/100°(Typ.)
Back Light MTBF	N/A
Brightness Control	Yes
LCD Interface	LVDS
VGA input	Yes
Video input	Yes
S-video input	Yes
I/O	
Video	1 x S-video in/ 1 x Video-in
Mechanical and Environmental	
Power Requirement	12V DC
Operating Temperature	0~50°C
Operating Humidity	90%
Storage Humidity	90%
Dimension	283(w) x 184(H) x 27.2(D)
Net Weight	0.75kg

## Ordering Information

- AP-LKLH1041-01  
Industrial Monitor Kit 10.4" 1500 nits, TFT, DC, VGA, AV