

**Features**

- Various safety approval.
- Large devices have isolated external mounting tab.
- Two lead style (bare wire or PVC lead).

**Applications**

- Automatic machines, Office appliances and Power source.

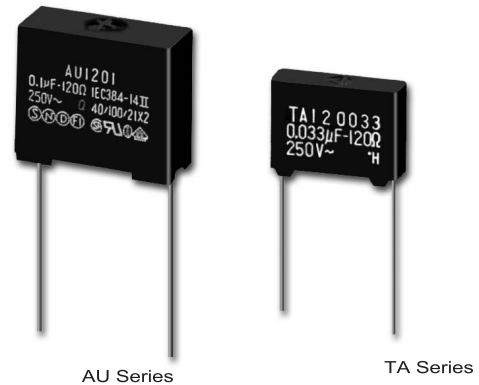
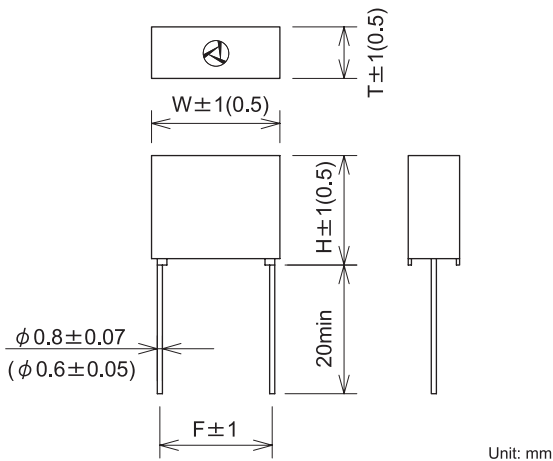
AU Series

Safety Agency : Standard	File No.
UL : UL-1414	E47474
CSA : CSA C22.2 No.0, No.1	LR37404,LR68886,LR104926
VDE : IEC60384-14 II, EN132400	89705, 101311
SEV : "	00.1530 99.770454.01
SEMKO : "	9415208, 9921050
NEMKO : "	P94102376, P99101378
FIMKO : "	178357-01, F113301
DEMKO : "	302908, DK99-02077

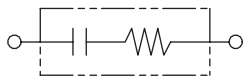
TA Series

Safety Agency : Standard	File No.
UL : UL-1414	E47474
CSA : CSA C22.2 No.0, No.1	LR37404 LR68886
VDE : IEC60384-14 II, EN132400	126004, 121897

*Dimensions*



*Circuit*



**Electrical Specifications**

Rated Voltage **250VAC**

Safety Agency	Class	Model Number	Capacitance $\mu\text{F} \pm 20\%$	Resistance $\Omega \pm 30\%$	Dimensions				Pulse condition (Max.)			Peak Pulse Voltage	Test Voltage	Insulation Resistance	
					W	H	T	F	Peak to peak	Pulse width Max	Repetitive frequency				Pulse width (sec) x Frequency(Hz)
	X2	AU120033	0.033	120(1/2W)	20.0	17.0	8.0	17.5	700V	120(60)Hz	20msec.	3(0.8)	700V	Line to Line 2000Vdc or 1200Vrms 50/60Hz 2~5sec Line to Case 2000Vrms 50/60Hz 60sec	Line to Line 15000M $\Omega$ min Line to Case 100000M $\Omega$ min (at 500Vdc)
		AU1201	0.1	120(1/2W)							50msec.				
		AU047033	0.033	47(1/2W)							20msec.	6(1.5)			
		AU0471	0.1	47(1/2W)							50msec.				
		AU010033	0.033	10(1/2W)							20msec.	10(2.5)			
AU0101	0.1	10(1/2W)	50msec.												
	X2	TA120033	0.033	120(1/4W)	18.0	12.0	5.0	16.0	700V	20msec.	3(0.8)	800V	Line to Line 2000Vdc or 1080Vrms Line to Case 2000Vrms		

Operating Temperatuer: -40~+85°C