

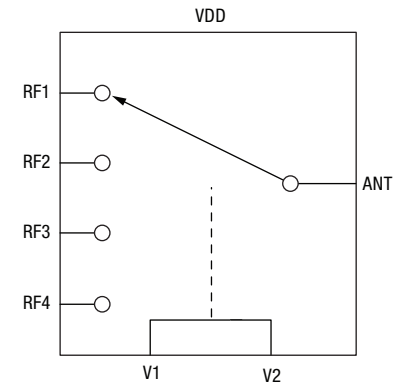
PRELIMINARY DATA SHEET

# SKY14151-350LF: High-Power Single Pole Four Throw (SP4T) Switch with Decoder

## Features

- Broadband operation (0.1–2.5 GHz)
- Low insertion loss (0.35 dB @ 1GHz, 0.5 dB @ 2 GHz) with high isolation (29 dB @ 1 GHz)
- $V_{DD} = 2.5$  to 3 V for high-power applications, can be used down to 1.8 V for low-power applications
- High linearity IMD < -110 dBm
- Good harmonic performance: < -80 dBc @ 0.9 GHz
- Low voltage logic compatible(  $V_{HIGH}$  Min. = 1.8 V)
- 3 x 3 mm 16-pin QFN, lead (Pb)-free and RoHS-compliant package
- Switch uses state-of-the-art GaAs pHEMT process

## Functional Diagram



## Description

The SKY14151 is a symmetrical single pole four throw (SP4T) switch designed for broad band, high power switching applications which demand high linearity and low insertion loss. The switch is manufactured using the Skyworks state of the art pHEMT process. This is a general purpose switch that is optimized for a variety of multimode applications such as GSM/WCDMA/EDGE.

The SKY14151 features integrated logic that uses only two control lines for the switch operation. The low current consumption of SKY14151 makes it suitable for battery-operated applications.

This part comes in an industry-standard 3 x 3 mm 16-pin QFN package that is lead (Pb)-free and RoHS-compliant.

**NEW** Skyworks offers lead (Pb)-free, RoHS (Restriction of Hazardous Substances)-compliant packaging.



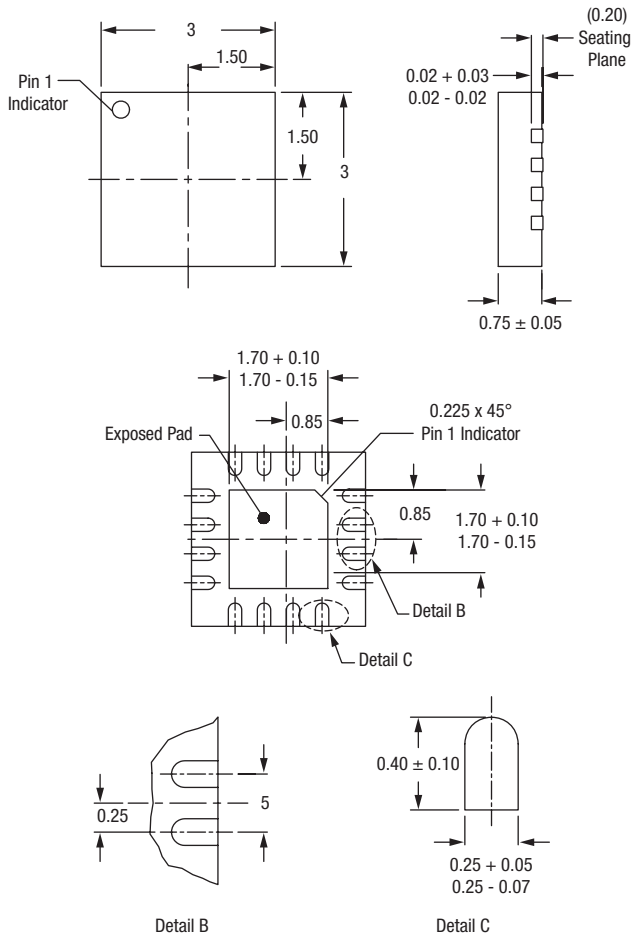
**Preliminary Data Sheet:** Based on engineering results. Sampling quantities available. Pin out and package have been determined.

**Electrical Specifications****T<sub>A</sub> = 25 °C, V<sub>DD</sub> = 2.5–3 V, V<sub>HIGH</sub> = V<sub>DD</sub>, all unused RF ports are terminated in a 50 Ω load, unless otherwise noted**

Parameter	Conditions	Min.	Typ.	Max.	Unit
<b>Electrical Characteristics</b>					
Insertion loss	f = 1 GHz		0.35		dB
	f = 2 GHz		0.5		dB
	f = 2.5 GHz		0.55		dB
Isolation	f = 1 GHz		29		dB
	f = 2 GHz		25		dB
	f = 2.5 GHz		23		dB
Return loss (worst case)	0.1 – 2.5 GHz				dB
<b>Operating Characteristics</b>					
Second harmonic	f <sub>fundamental</sub> = 900 MHz, P <sub>IN</sub> = 34.5 dBm		-80		dBc
	f <sub>fundamental</sub> = 1.8 GHz, P <sub>IN</sub> = 31.5 dBm		-80		dBc
Third harmonic	f <sub>fundamental</sub> = 900 MHz, P <sub>IN</sub> = 34.5 dBm		-80		dBc
	f <sub>fundamental</sub> = 1.8 GHz, P <sub>IN</sub> = 31.5 dBm		-80		dBc
Input 0.1 dB compression point	f = 900 MHz		37		dBm
	f = 1.8 GHz		34		dBm
I <sub>md3</sub>	Standard setup		-110		dBm
Power handling under mismatch	f = 900 MHz, VSWR = 20:1		34.5		dBm
	f = 1.8 GHz, VSWR = 20:1		31.5		dBm
Switching speed			5		μs
Startup time			25		μs
<b>DC/Control Specifications</b>					
Supply voltage (V <sub>BATT</sub> )		2.5		4.4	V
Switched supply voltage (V <sub>DD</sub> )		2.5	2.65	3	V
Switched supply current (I <sub>DD</sub> )			0.3		mA
Control voltage	V <sub>HIGH</sub>	1.8 <sup>(1)</sup>	2.65	3	V
	V <sub>LOW</sub>		0.2	0.3	V
	Control current, I <sub>HIGH</sub>		0.5		μA
	Control current, I <sub>LOW</sub>		0.5		μA

1. For 1.8 V control, V<sub>DD</sub> must be < 2.65 V.

### Package Outline (3 x 3 x 0.75 mm 16 pin QFN)



### Absolute Maximum Ratings

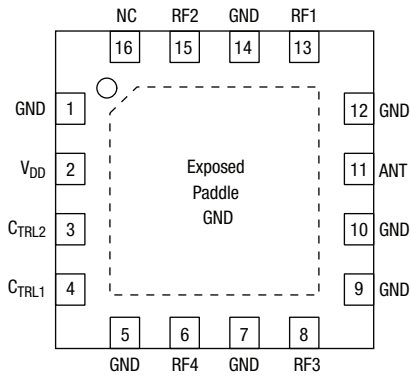
Characteristic	Value
Switched supply voltage ( $V_{DD}$ )	3 V
Input power (low frequency to 2.5 GHz, $V_{DD} = 2.5-3$ V)	36 dBm
Control voltage	3 V
Operating temperature	-30 °C to +85 °C
Storage temperature	-50 °C to +100 °C

Performance is guaranteed only under the conditions listed in the specifications table and is not guaranteed under the full range(s) described by the Absolute Maximum specifications. Exceeding any of the absolute maximum/minimum specifications may result in permanent damage to the device and will void the warranty.

**CAUTION:** Although this device is designed to be as robust as possible, ESD (Electrostatic Discharge) can damage this device. This device must be protected at all times from ESD. Static charges may easily produce potentials of several kilovolts on the human body or equipment, which can discharge without detection. Industry-standard ESD precautions must be employed at all times.

1. Dimensioning and tolerancing per ASME Y14.5M – 1994.
2. Coplanarity applies to the exposed heat sink slug as well as the terminals.
3. Plating requirement per source control drawing (SCD) 2504.

### Pin Out (Top View)



### Pin Descriptions

Pin #	Pin Name	Description
1, 5, 7, 9, 10, 12, 14	GND	Ground. This pin should be connected to ground via the lowest possible electrical impedance.
2	V <sub>DD</sub>	Supply voltage input. This voltage may be switched. The switching time must be no longer than the start-up time.
3	C <sub>TRL2</sub>	Control signal 2. The logic level applied to this pin, along with the logic level applied to pin 4, controls the state of the switch.
4	C <sub>TRL1</sub>	Control signal 1. The logic level applied to this pin, along with the logic level applied to pin 3, controls the state of the switch.
6	RF4	RF output 4. This pin is either connected directly to or is disconnected from pin 11, depending upon the control voltages applied to pins 3 and 4.
8	RF3	RF output 4. This pin is either connected directly to or is disconnected from pin 11, depending upon the control voltages applied to pins 3 and 4.
11	ANT	Antenna. This pin is connected directly and exclusively to pin 6, 8, 13 or 15, depending upon the control voltages applied to pins 3 and 4.
13	RF1	RF output 4. This pin is either connected directly to or is disconnected from pin 11, depending upon the control voltages applied to pins 3 and 4.
15	RF2	RF output 4. This pin is either connected directly to or is disconnected from pin 11, depending upon the control voltages applied to pins 3 and 4.
16	NC	This pad can be left open.
	Paddle	Exposed paddle. This paddle should be connected to ground via the lowest possible electrical and thermal impedance.

### Logic

The switch can operate in one of four states, which are listed in the truth table.

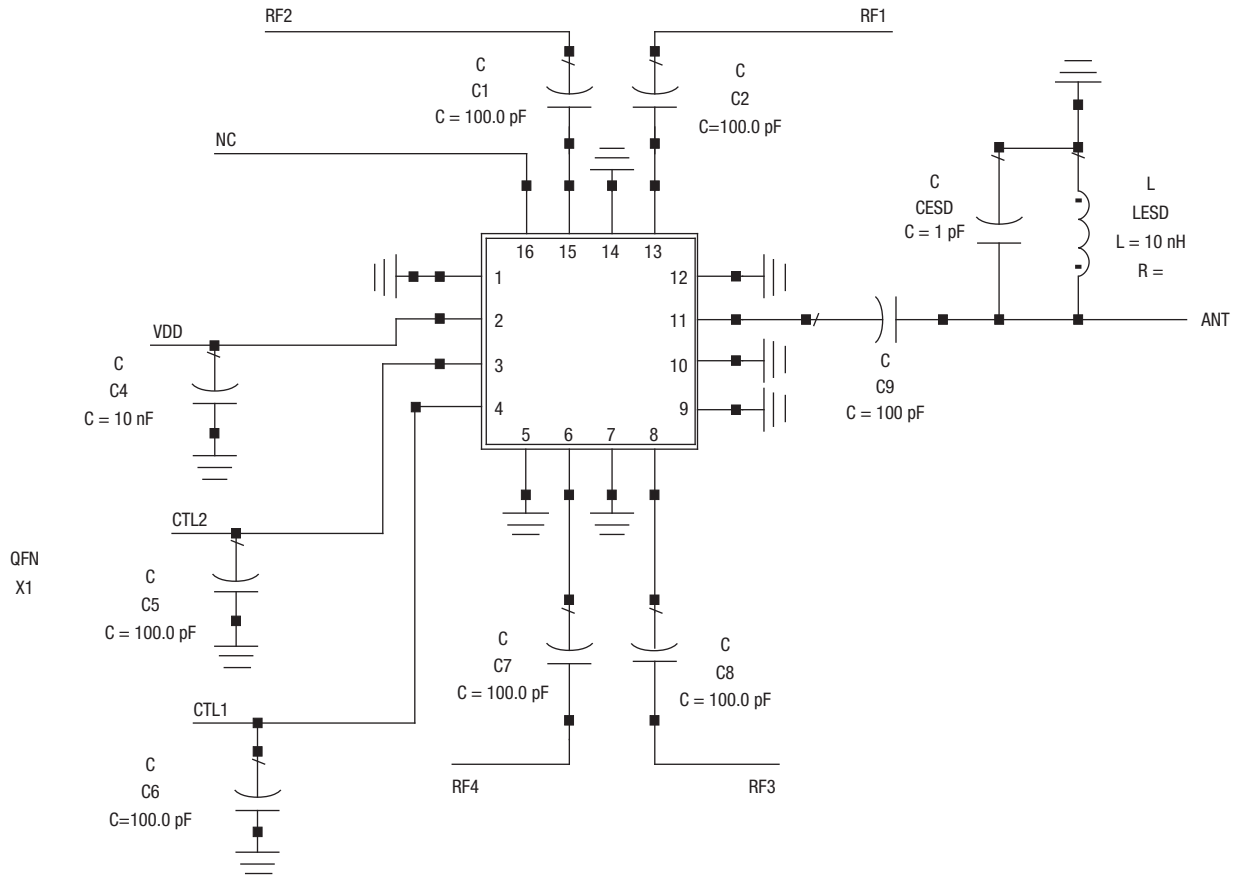
The switch may be used in the active or standby mode. The modes are controlled by the voltage which is applied to pin 2, V<sub>DD</sub>. The switch is active when the V<sub>DD</sub> is high and in standby mode when V<sub>DD</sub> is low, in which case all paths are in the isolation state.

### Truth Table

State	C <sub>TRL1</sub>	C <sub>TRL2</sub>	RF Path
1	V <sub>LOW</sub>	V <sub>LOW</sub>	Ant – RF1
2	V <sub>LOW</sub>	V <sub>HIGH</sub>	Ant – RF2
3	V <sub>HIGH</sub>	V <sub>LOW</sub>	Ant – RF3
4	V <sub>HIGH</sub>	V <sub>HIGH</sub>	Ant – RF4

V<sub>DD</sub> = High

### Evaluation Board Schematic

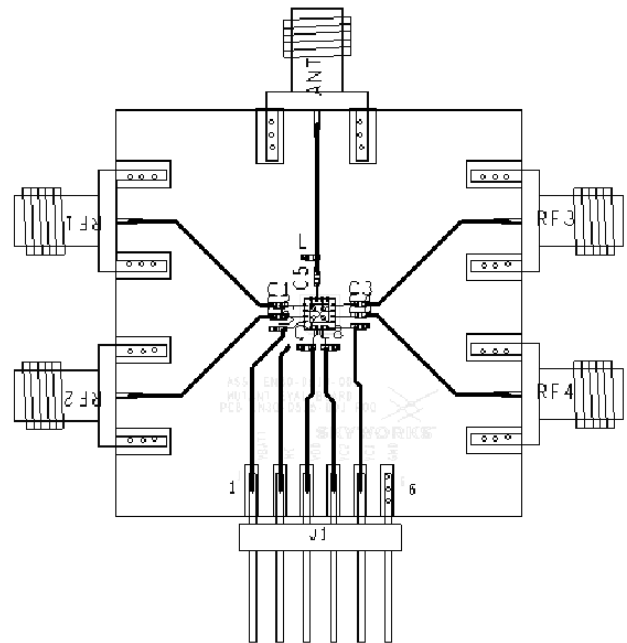


### Applications

An LESD and a CESD comprise the ESD filter. This topology and these component values may vary according to the ESD requirement and acceptable insertion loss for a specific application.

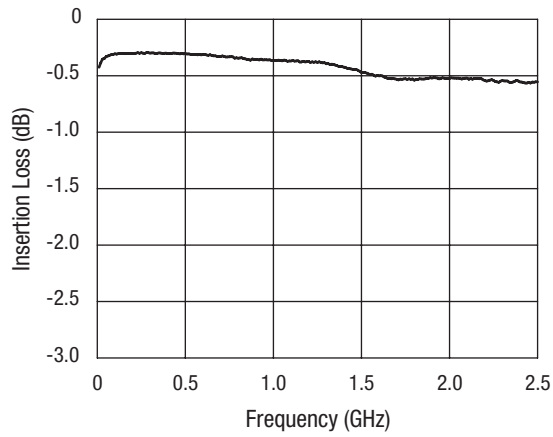
Components LESD and CESD constitute an ESD filter. Decoupling capacitors (C3 through C6) are recommended for suppressing noise and preventing RF leakage into the DC control circuits.”

### Evaluation Board

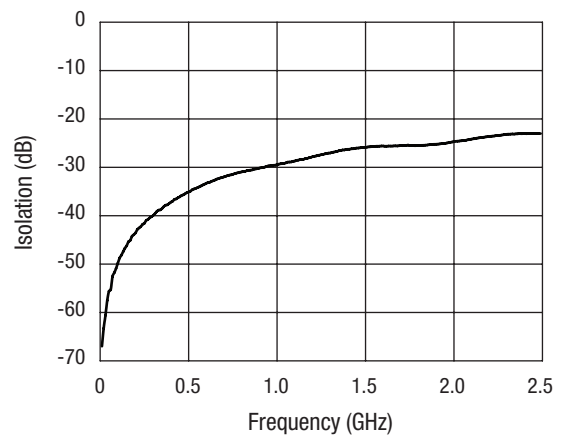


### Typical Performance Data

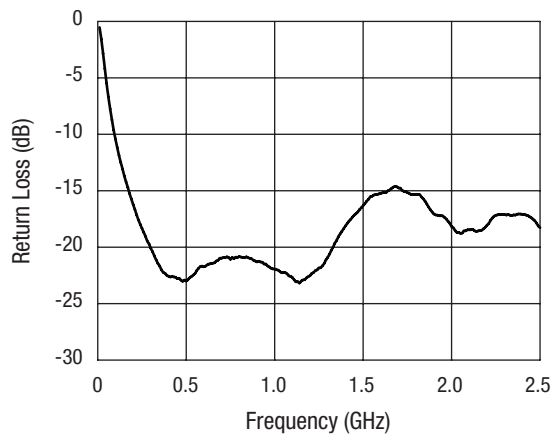
$T_A = 25\text{ }^\circ\text{C}$ ,  $V_{DD} = 2.5\text{--}3\text{ V}$ ,  $V_{HIGH} = V_S$ , all unused RF ports are terminated in a  $50\text{ }\Omega$  load, unless otherwise noted



**Insertion Loss**



**Isolation**



**Return Loss**

Copyright © 2008, 2009, Skyworks Solutions, Inc. All Rights Reserved.

Information in this document is provided in connection with Skyworks Solutions, Inc. ("Skyworks") products or services. These materials, including the information contained herein, are provided by Skyworks as a service to its customers and may be used for informational purposes only by the customer. Skyworks assumes no responsibility for errors or omissions in these materials or the information contained herein. Skyworks may change its documentation, products, services, specifications or product descriptions at any time, without notice. Skyworks makes no commitment to update the materials or information and shall have no responsibility whatsoever for conflicts, incompatibilities, or other difficulties arising from any future changes.

No license, whether express, implied, by estoppel or otherwise, is granted to any intellectual property rights by this document. Skyworks assumes no liability for any materials, products or information provided hereunder, including the sale, distribution, reproduction or use of Skyworks products, information or materials, except as may be provided in Skyworks Terms and Conditions of Sale.

THE MATERIALS, PRODUCTS AND INFORMATION ARE PROVIDED "AS IS" WITHOUT WARRANTY OF ANY KIND, WHETHER EXPRESS, IMPLIED, STATUTORY, OR OTHERWISE, INCLUDING FITNESS FOR A PARTICULAR PURPOSE OR USE, MERCHANTABILITY, PERFORMANCE, QUALITY OR NON-INFRINGEMENT OF ANY INTELLECTUAL PROPERTY RIGHT; ALL SUCH WARRANTIES ARE HEREBY EXPRESSLY DISCLAIMED. SKYWORKS DOES NOT WARRANT THE ACCURACY OR COMPLETENESS OF THE INFORMATION, TEXT, GRAPHICS OR OTHER ITEMS CONTAINED WITHIN THESE MATERIALS. SKYWORKS SHALL NOT BE LIABLE FOR ANY DAMAGES, INCLUDING BUT NOT LIMITED TO ANY SPECIAL, INDIRECT, INCIDENTAL, STATUTORY, OR CONSEQUENTIAL DAMAGES, INCLUDING WITHOUT LIMITATION, LOST REVENUES OR LOST PROFITS THAT MAY RESULT FROM THE USE OF THE MATERIALS OR INFORMATION, WHETHER OR NOT THE RECIPIENT OF MATERIALS HAS BEEN ADVISED OF THE POSSIBILITY OF SUCH DAMAGE.

Skyworks products are not intended for use in medical, lifesaving or life-sustaining applications, or other equipment in which the failure of the Skyworks products could lead to personal injury, death, physical or environmental damage. Skyworks customers using or selling Skyworks products for use in such applications do so at their own risk and agree to fully indemnify Skyworks for any damages resulting from such improper use or sale.

Customers are responsible for their products and applications using Skyworks products, which may deviate from published specifications as a result of design defects, errors, or operation of products outside of published parameters or design specifications. Customers should include design and operating safeguards to minimize these and other risks. Skyworks assumes no liability for applications assistance, customer product design, or damage to any equipment resulting from the use of Skyworks products outside of stated published specifications or parameters.

Skyworks, the Skyworks symbol, and "Breakthrough Simplicity" are trademarks or registered trademarks of Skyworks Solutions, Inc., in the United States and other countries. Third-party brands and names are for identification purposes only, and are the property of their respective owners. Additional information, including relevant terms and conditions, posted at [www.skyworksinc.com](http://www.skyworksinc.com), are incorporated by reference.