



Data Sheet



Product Category: IF SAW Filter

Part Number	Package	Application	Last Modified
807-IF350.0M-B	7.0 x 5.0 SMD	Mobile Communication	Jan. 01, 2007

TYPE :
300.00 MHz IF SAW Filter



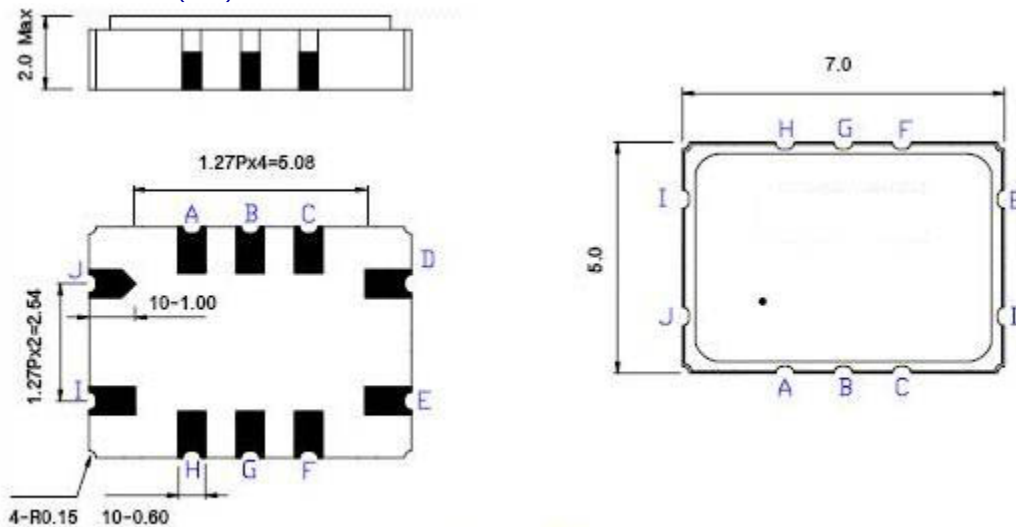
PART NUMBER :
807-IF350.0M-B

OPERATING CONDITIONS / ELECTRICAL CHARACTERISTICS

PARAMETERS	Minimum	Typical	Maximum	Units
Center Frequency	349.0	350.0	350.1	MHz
Insertion Loss at Fo	-	15.0	16.5	dB
Bandwidth at -0.5 dB	2.4	3.1	-	MHz
Bandwidth at -3.0 dB	-	4.8	-	MHz
Bandwidth at -35.0 dB	-	9.4	12.0	MHz
Relative Attenuation:	-			
Lower Sidelobe	38	43	-	dB
Upper Sidelobe	38	43	-	dB
Temperature Coefficient	-	0.03	-	ppm/°C
Source Impedance (Single Ended)*	-	50	-	ohm
Load Impedance (Single Ended)*	-	50	-	ohm
Amplitude Ripple	-	0.5	1.0	dBp-p
Group Delay Variation	-	25	40	ns
Ambient Temperature	-	25	-	°C
Absolute Delay at Fo	-	0.45	-	µsec

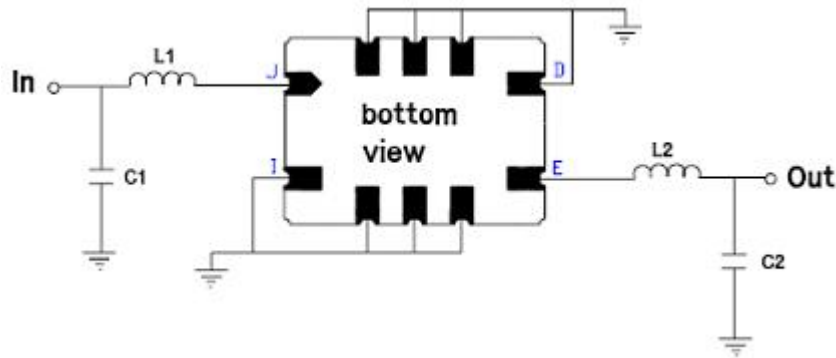
* With Matching Network (Ref. Testing Environment Circuit as shown) Modification to Impedance Values are possible if needed.

PACKAGE OUTLINE (mm)



PIN Descriptions: IN – I,J. OUT – E,D GROUND – A,B,C,F,G,H

TEST CIRCUIT

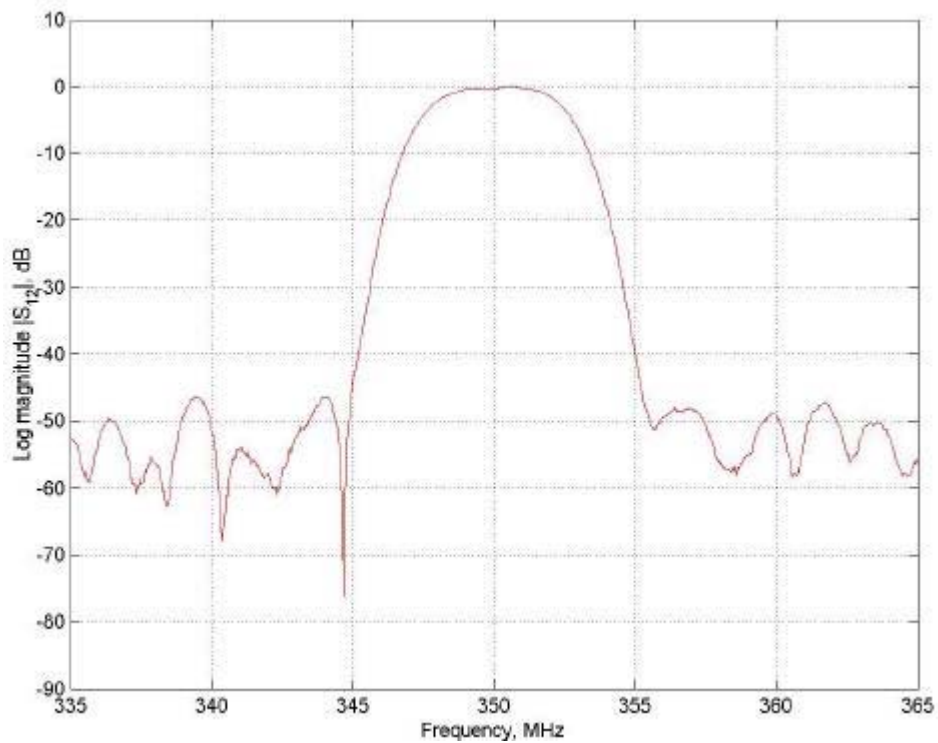


TEST FIXTURE AND VALUES/SOURCE AND LOAD IMPEDANCE 50 ohm

INPUT: L1: 51.7 nH; C1: 18pF

OUTPUT: L2: 48.5 nH; C2: 22pF

FREQUENCY RESPONSE



Oscilent Corporation - CALL **949.252.0522**

Part No.: 807-IF350.0M-B

18195 East McDermott Street . Building D . Irvine . CA 92614 . USA

Fax: 949.252.0599 . E-Mail: Sales@Oscilent.com