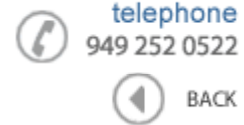


**Data Sheet**

Product Category: IF SAW Filter

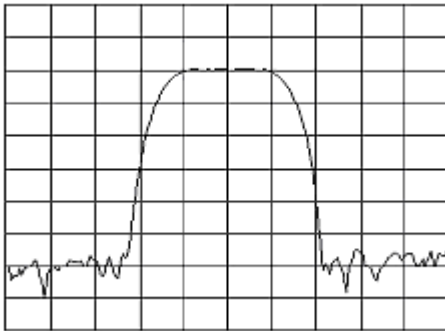
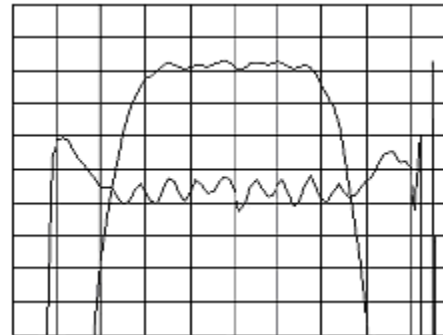
Part Number
820-IF114.99M-APackage
20.2 x 12.6 Thru HoleApplication
Base Station & RepeaterLast Modified
May 30 2003

TYPE :

114.99 MHz Bandpass Filter

1.8 MHz Bandwidth

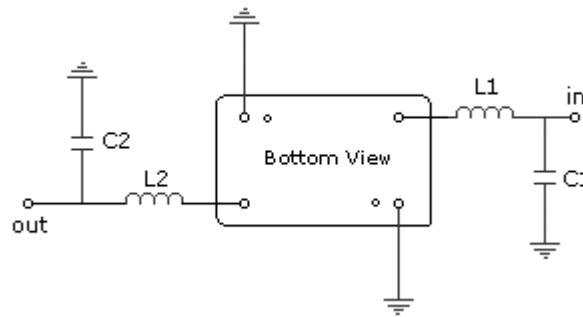
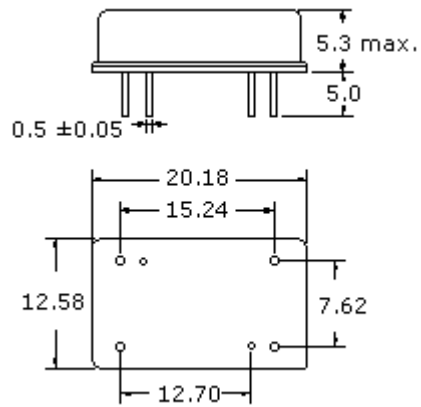
PART NUMBER :

820-IF114.99M-AHorizontal : 0.8 MHz/Div
Vertical : 10 dB/DivHorizontal : 0.4 MHz/Div
Vertical : 1 dB/Div
Vertical : 100 ns/Div**OPERATING CONDITIONS / ELECTRICAL CHARACTERISTICS**

PARAMETERS	Minimum	Typical	Maximum	Units
Center Frequency	114.95	114.99	115.03	MHz
Insertion Loss	-	20.0	23.0	dB
0.5dB Bandwidth	1.4	1.6	-	MHz
3dB Bandwidth	1.8	2.05	-	MHz
50dB Bandwidth	-	3.44	3.8	MHz
Passband Ripple	-	0.3	0.5	dB
Group Delay Variation	-	100	200	nsec
Absolute Delay	-	1.9	-	µsec
Ultimate Rejection	50	55	-	dB
Substrate Material	-	Qz	-	-
Ambient Temperature	-	25	-	°C
Phase Linearity	-	2.5	7.0	degc

* Custom SAW IF Filters available. Contact Oscilent for assistance.

PACKAGE OUTLINE (mm)**TEST FIXTURE**



L1 = 100nH C1 = 56pF
 L2 = 86nH C2 = 56pF
 Source/Load Impedance = 50 ohms

Oscilent Corporation - CALL **949.252.0522**

17962 Sky Park Circle, Building D, Irvine, CA 92614, USA
 Fax: 949.252.0599, E-Mail: Sales@Oscilent.com

Part No.: 820-IF114.99M-A