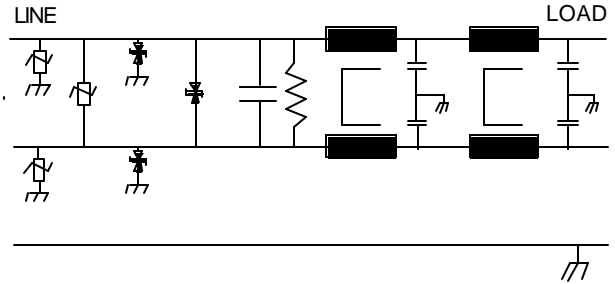
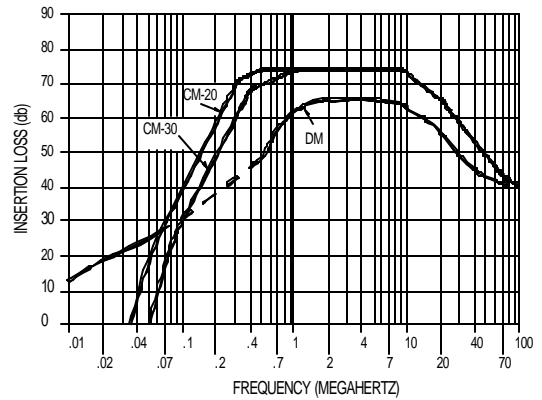


Operating voltage = 115/250 Vac  
 Operating current = 20, 30 Amp  
 Operating frequency = 50/60Hz  
 Operating temperature = -20° to 50° C  
 Transient suppression = 354—432 volts  
 Maximum transient energy = 40 joules  
 Leakage current = 3.5 ma at 250 Vac, 60 Hz  
 Max residual voltage after 1 sec. = 30 Volts



INSERTION LOSS 1306 SERIES



The 1306 filter is the same as the 1151 series with the addition of transient suppression devices. It is very useful in power control systems operating in very noisy environments. The filter is also useful in any systems using switched mode power supplies. For the system with a space problem this filter has the maximum insertion loss provided in a very small package.

**Ordering Information**

20 AMPS - KK-1306-20  
 30 AMPS - KK-1306-30

