

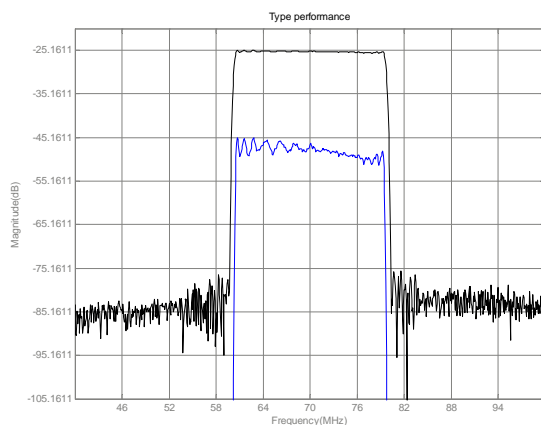


LBN07081 SAW Filter Electrical Characteristic

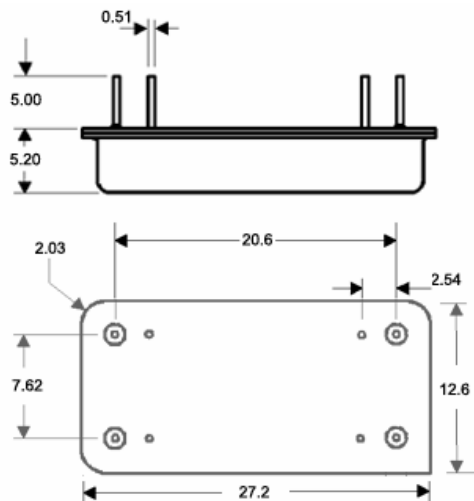
Specifications

| Parameter | Unit | Minimum | Typical | Maximum |
|----------------------------|------|---|---------|---------|
| Center Frequency | MHz | 69.9 | 70 | 70.1 |
| Insertion Loss | dB | - | 25.1 | 26 |
| 3 dB Bandwidth | MHz | 19.2 | 19.30 | - |
| 15 dB Bandwidth | MHz | - | 19.94 | 20.0 |
| 40 dB Bandwidth | MHz | - | 20.44 | 23.0 |
| 50 dB Bandwidth | MHz | - | 20.54 | - |
| Passband Variation | dB | - | 0.6 | 1.0 |
| Absolute Delay | usec | - | 2.37 | 4.0 |
| Ultimate Rejection | dB | 50 | 53 | - |
| Substrate Material | | 128 LiNbO3 | | |
| Ambient Temperature | °C | 25 | | |
| Package Size | | DIP2712 (27.2x12.7x5.2mm ³) | | |

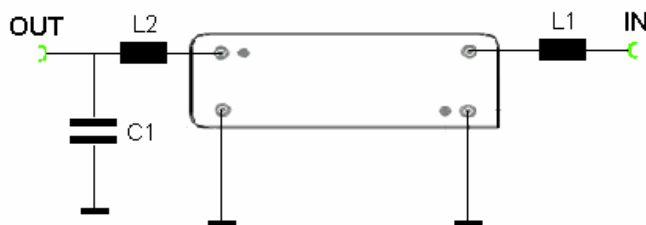
Typical Performance



Package Outline



Matching Configuration



L1=100nH L2=82nH C1=36pF

Source/Load Impedance=50 ohm

Notes - Component values may change depending on board layout.