



TAI-SAW TECHNOLOGY CO., LTD.

No. 3, Industrial 2nd Rd., Ping-Chen Industrial District,
Taoyuan, 324, Taiwan, R.O.C.

TEL: 886-3-4690038 FAX: 886-3-4697532

E-mail: tstsales@mail.taisaw.com Web: www.taisaw.com

Approval Sheet For Product Specification

Issued Date:

Product Name: SAW Filter 315MHz SMD 3.0×3.0mm

TST Parts No.: TA0657A

Customer Parts No.: _____

Company: _____
Division: _____
Approved by : _____
Date: _____

Checked by: _____ Asin Lin

Approval by: _____ Francis Chen

Date: _____ 2007/02/16



TAI-SAW TECHNOLOGY CO., LTD.

No. 3, Industrial 2nd Rd., Ping-Chen Industrial District,
Taoyuan, 324, Taiwan, R.O.C.

TEL: 886-3-4690038 FAX: 886-3-4697532

E-mail: tstsales@mail.taisaw.com Web: www.taisaw.com

SAW Filter 315 MHz

MODEL NO.: TA0657A

V1.0

A. MAXIMUM RATING:

1. Input Power Level: 10 dB_m
2. DC voltage: 3 V
3. Operating Temperature: -40°C to 85°C
4. Storage Temperature: -40°C to +85° C

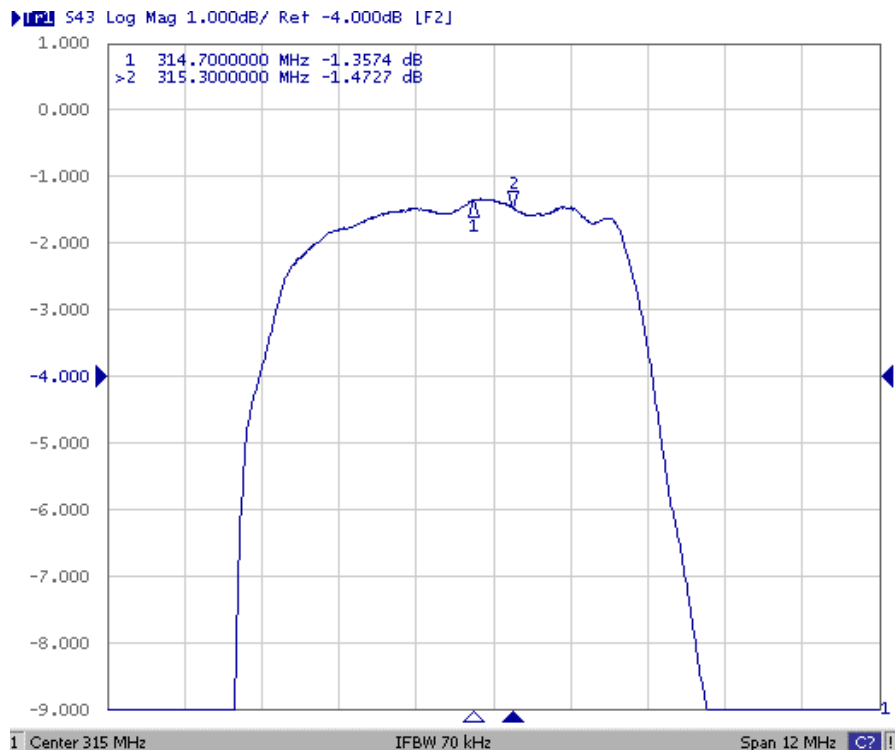
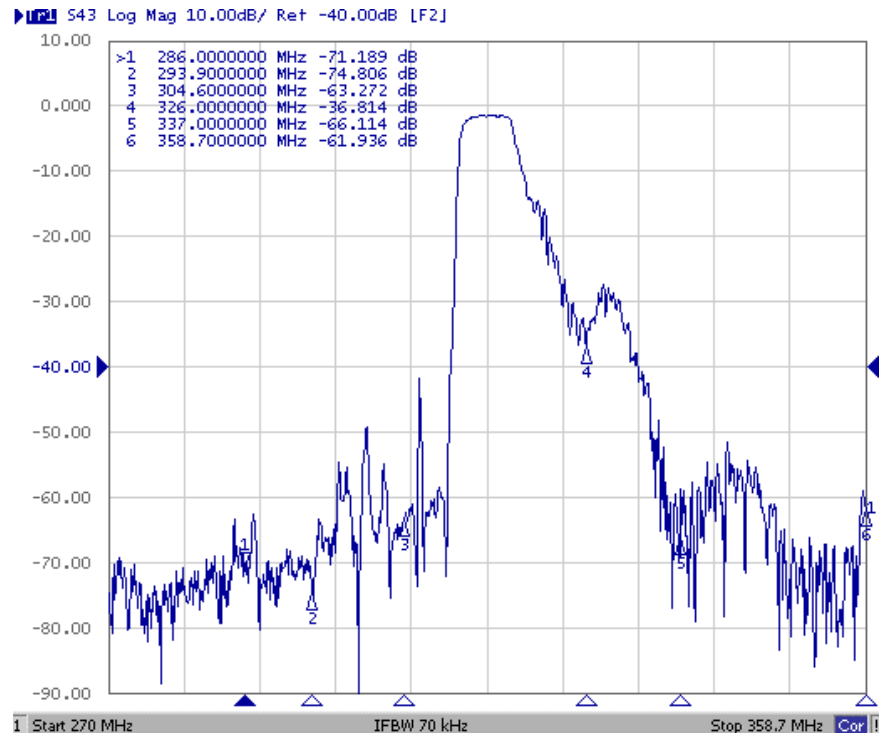
RoHS Compliant
Lead free
Lead-free soldering

B. CHARACTERISTICS:

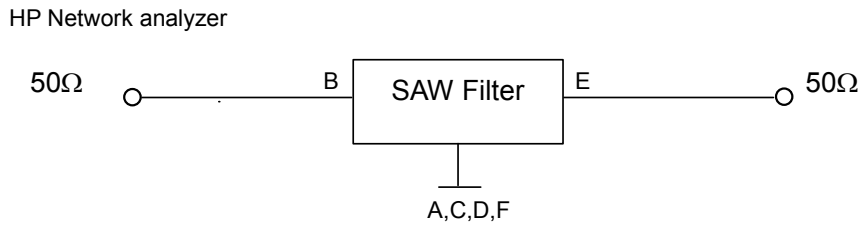
Item	Unit	Min.	Typical	Max.
Center frequency Fc	MH	-	315	-
Maximum Insertion loss 314.70 ~ 315.30 MHz IL	dB	-	1.52	2.5
Amplitude ripple 314.70 ~ 315.30 MHz	dB	-	0.4	1.2
VSWR 314.70 ~ 315.30 MHz			1.4	1.6
Attenuation (Reference level from Max IL dB)				
270.0 ~ 286.0 MHz	dB	55	65	-
293.0 ~ 293.9 MHz	dB	53	60	-
304.0 ~ 304.6 MHz	dB	48	60	-
325.4 ~ 326.0 MHz	dB	24	30	-
336.1 ~ 337.0 MHz	dB	36	52	-
357.5 ~ 358.7 MHz	dB	50	60	-
Source impedance Zs	Ω	-	50	-
Load impedance ZL	Ω	-	50	-
Temperature coefficient	ppm/k	-	-36	-

Note1. No matching network required for operation at 50Ω

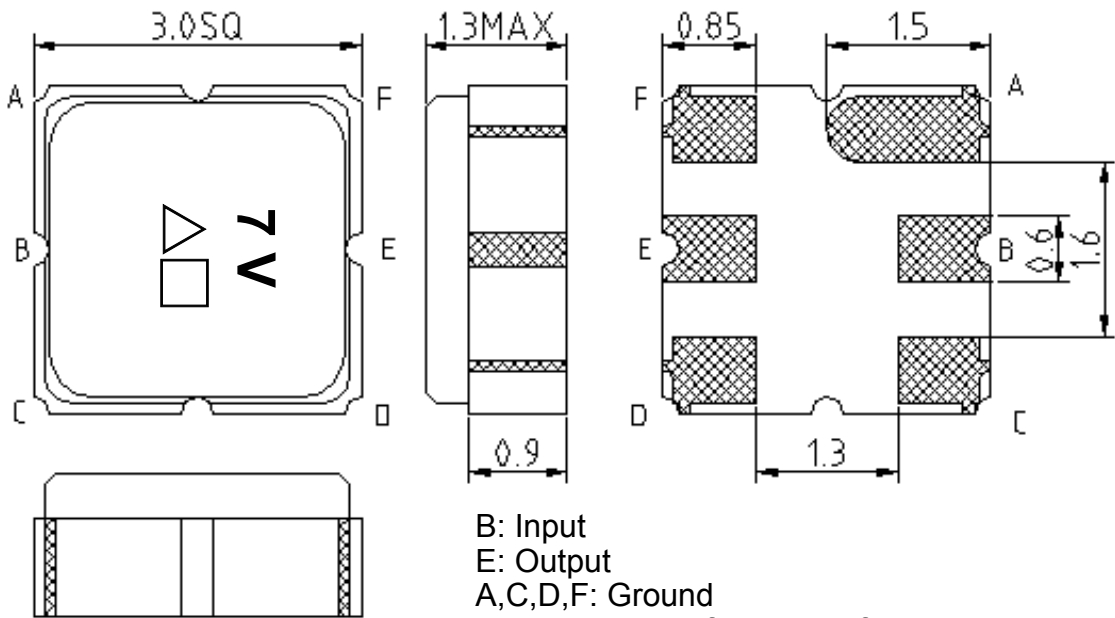
C. TRANSFER FUNCTION :



D. MEASUREMENT CIRCUIT:

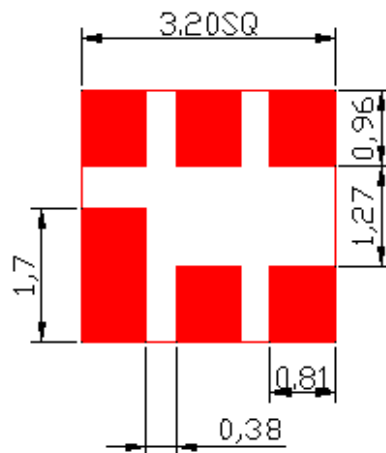


E. OUTLINE DRAWING:



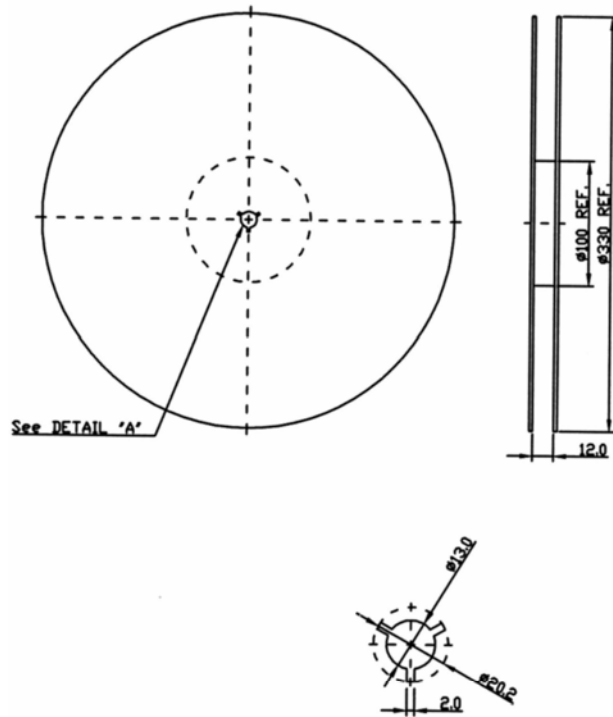
B: Input
 E: Output
 A,C,D,F: Ground
 △: Year code(6 for 2006,7 for 2007,...)
 □: Date code code (Provided by planer each year)
 Unit: mm

F.PCB FOOTPRINT:

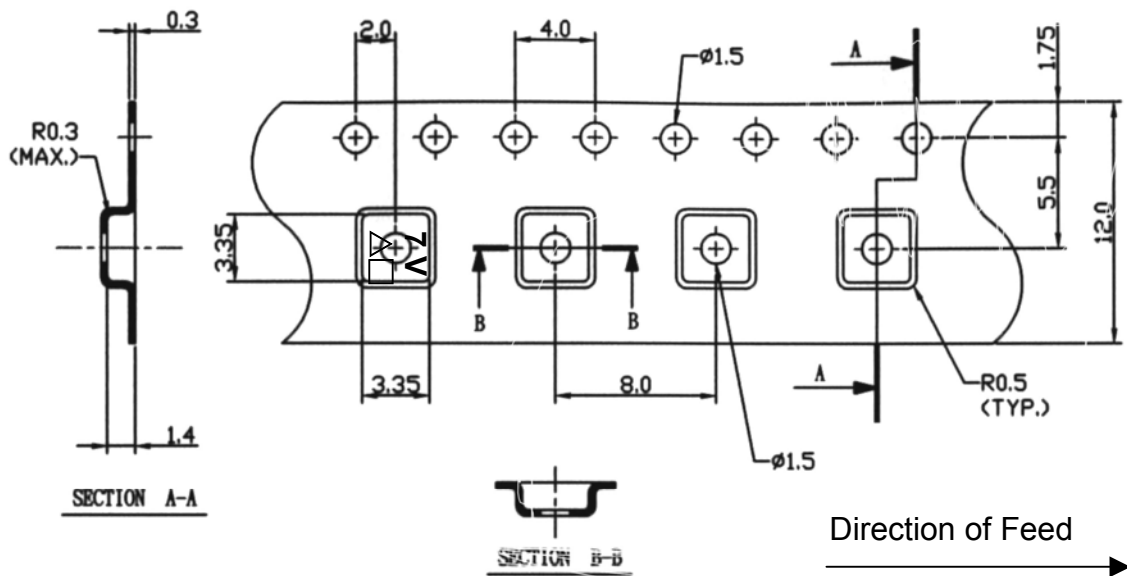


G. PACKING:

1. REEL DIMENSION



2. TAPE DIMENSION



H.RECOMMENDED REFLOW PROFILE:

