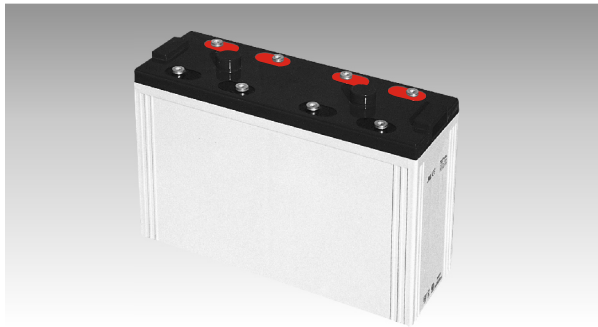
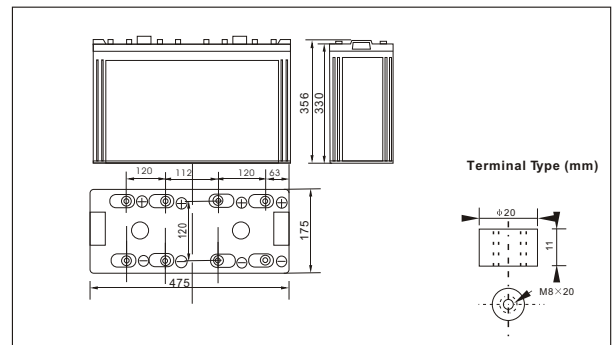




SWG210000(2V1000AH)



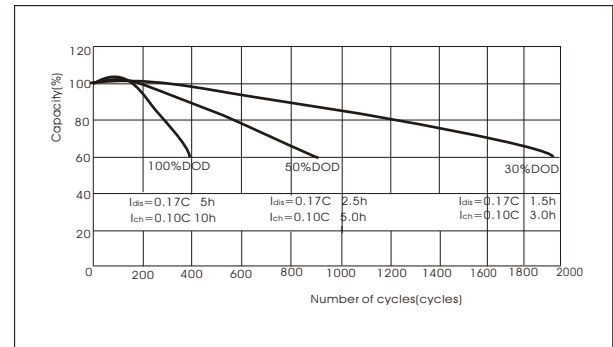
Outer dimensions (mm)



Specifications

Nominal Voltage		2 V
Rated capacity (20 hour rate)		1000 Ah
Dimensions	Total Height	356 mm (14.02 inches)
	Height	330 mm (12.99 inches)
	Length	475 mm (18.7 inches)
	Width	175 mm (6.89 inches)
Weight Approx		70 Kg (154.7 lbs)

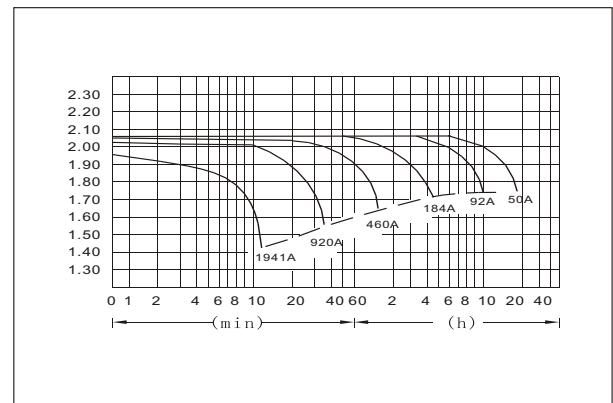
Curves of cycle life(25°C)



Characteristics

Capacity 25°C(77°F)	20 hour rate(50 A)	1000 AH
	10 hour rate(92 A)	920 AH
	5 hour rate(147A)	736 AH
	1 hour rate(552 A)	552 AH
	Internal Resistance	Full charged Battery at 25°C(77°F)
Capacity affected by Temperature (10hour rate)	40°C(104°F)	102%
	25°C(77°F)	100%
	0°C(32°F)	85%
	-15°C(5°F)	65%
Self-Discharge at 25°C(77°F)	Capacity after 3 month storage	91%
	Capacity after 6 month storage	82%
	Capacity after 12 month storage	64%
Terminal		T20
Charge (constant Voltage)	Cycle	Initial Charging Current less than 368 A Voltage 2.35-2.40V
	Float	Voltage 2.25-2.30V

Discharge Curves 25°C(77°F)



Constant Current(Amp) and Constant Power(Watt) Discharge Table at 25°C(77°F)

Time		5min	10min	15min	30min	1h	2h	3h	4h	5h	8h	10h	20h
1.60V	A	2947	1941	1565	1049	552	322	236	184	152	108	97	52
	W	5068	3455	2797	1879	994	589	439	345	288	206	186	101
1.70V	A	2854	1752	1474	1003	519	307	230	179	149	105	95	51
	W	5080	3260	2749	1876	978	590	444	348	290	205	186	99
1.75V	A	2761	1567	1289	938	502	300	224	177	147	104	93	51
	W	5025	2971	2452	1800	969	580	436	344	288	204	183	100
1.80V	A	2661	1477	1198	865	486	293	219	174	144	101	92	50
	W	4975	2838	2300	1670	942	571	430	342	283	200	182	99
1.85V	A	2571	1384	1106	773	469	285	212	169	140	98	87	47
	W	4860	2671	2145	1507	920	562	419	336	278	196	176	95