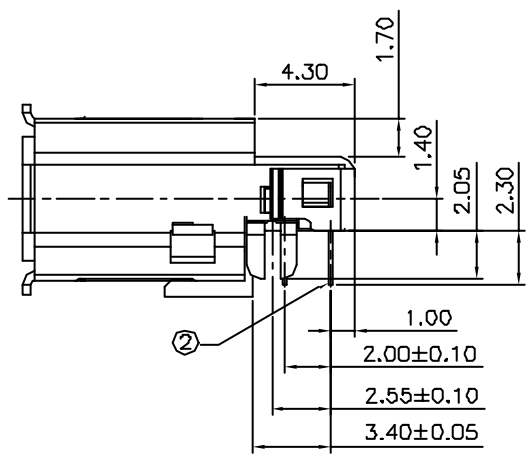
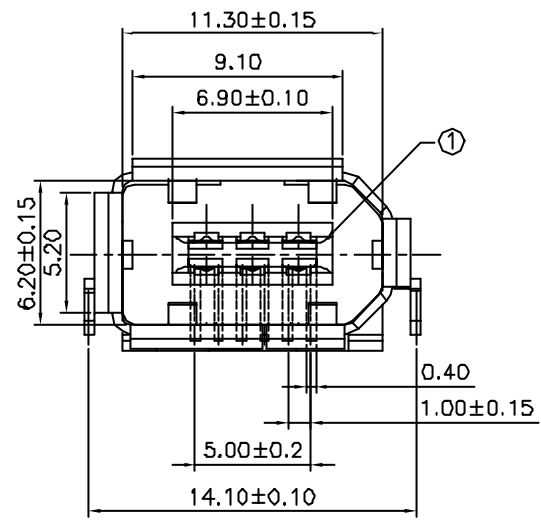
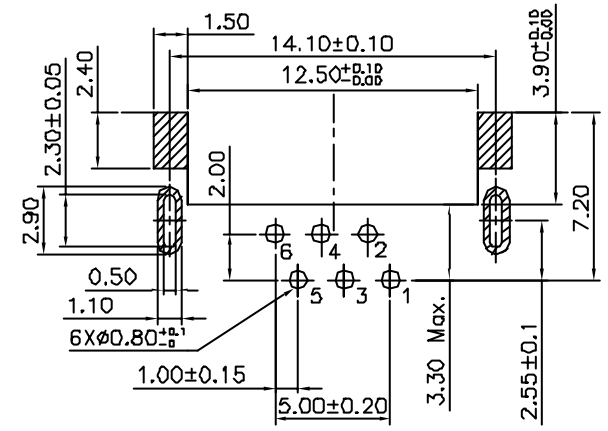


Recommended P.C.B Layout (Component Side)



NOTE(1):

020179MRD06SX01ZL

1. Selective plating
  - \*S1,-05u" Min. gold in contact area/  
100u" Min. Tin in solder area.
  - \*S2,-Gold flash in contact area/  
100u" Min. Tin in solder area.
  - \*S3,-10u" Min. gold in contact area/  
100u" Min. Tin in solder area.
  - \*S4,-15u" Min. gold in contact area/  
100u" Min. Tin in solder area.
  - \*S5,-30u" Min. gold in contact area/  
100u" Min. Tin in solder area.
  - \*S6,-50u" Min. gold in contact area/  
100u" Min. Tin in solder area.

4	SHELL	Brass	—	plated Nickel
3	SHELL	Brass	—	plated Nickel
2	TERMINAL	Brass	—	plated Gold/Tin
1	PLASTIC	High Temp	BLACK	UL94V-0
NO.	DESCRIPTION	MATERIAL	COLOR	REMARK

**SUYIN**  
CONNECTOR

CUSTOMER COPY TITLE: IEEE-1394 Connector, Level, DIP Type, Center height 1.35mm

PART NO.	020179MR006SX01ZL
PART NO. (OLD)	
DRAWING NO. <sup>D</sup> / <sub>NR</sub>	020179MR006SX01ZL
SCALE	4:1
UNIT	mm
A4	⊗

ECN (DCN) NO.	REV	DATE	DESCRIPTION	CHANGE	APPRO.	GENERAL TOLERANCE UNLESS OTHERWISE NOTED	Angle	±2°	DRAW
	0		NEW				30 ~	±0.50	DESIGN
							10 ~ 30	±0.30	CHECK
							~ 10	±0.15	APPRO.