

MITSUBISHI IGBT MODULES  
**CM75TL-24NF**

HIGH POWER SWITCHING USE

**CM75TL-24NF**



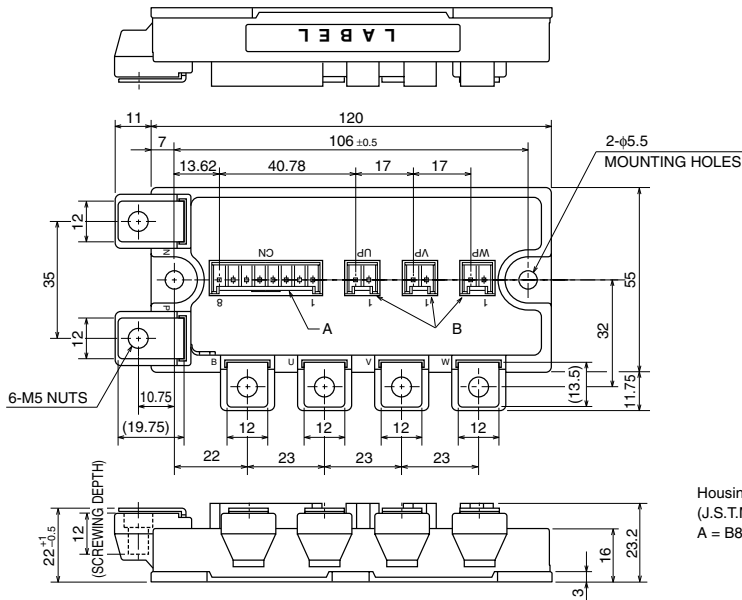
- IC ..... 75A
- VCES ..... 1200V
- Insulated Type
- 6-elements in a pack

**APPLICATION**

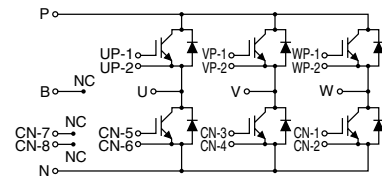
AC drive inverters & Servo controls, etc

**OUTLINE DRAWING & CIRCUIT DIAGRAM**

Dimensions in mm



Housing Type of A and B  
 (J.S.T.Mfg.Co.Ltd)  
 A = B8P-VH-FB-B, B = B2P-VH-FB-B



**CIRCUIT DIAGRAM**

CM75TL-24NF

HIGH POWER SWITCHING USE

**ABSOLUTE MAXIMUM RATINGS** (Tj = 25°C, unless otherwise specified)

Symbol	Parameter	Conditions	Ratings	Unit
V <sub>CE</sub>	Collector-emitter voltage	G-E Short	1200	V
V <sub>GE</sub>	Gate-emitter voltage	C-E Short	±20	V
I <sub>C</sub>	Collector current	DC, T <sub>C</sub> = 87°C <sup>*1</sup>	75	A
I <sub>CM</sub>		Pulse (Note 2)	150	A
I <sub>E</sub> (Note 1)	Emitter current		75	A
I <sub>EM</sub> (Note 1)		Pulse (Note 2)	150	A
P <sub>C</sub> (Note 3)	Maximum collector dissipation	T <sub>C</sub> = 25°C	520	W
T <sub>j</sub>	Junction temperature		-40 ~ +150	°C
T <sub>stg</sub>	Storage temperature		-40 ~ +125	°C
V <sub>iso</sub>	Isolation voltage	Terminals to base plate, f = 60Hz, AC 1 minute	2500	V <sub>rms</sub>
—	Torque strength	Main terminals M5 screw	2.5 ~ 3.5	N • m
—		Mounting M5 screw	2.5 ~ 3.5	N • m
—	Weight	Typical value	350	g

**ELECTRICAL CHARACTERISTICS** (Tj = 25°C, unless otherwise specified)

Symbol	Parameter	Test conditions	Limits			Unit
			Min.	Typ.	Max.	
I <sub>CES</sub>	Collector cutoff current	V <sub>CE</sub> = V <sub>CE</sub> , V <sub>GE</sub> = 0V	—	—	1	mA
V <sub>GE(th)</sub>	Gate-emitter threshold voltage	I <sub>C</sub> = 7.5mA, V <sub>CE</sub> = 10V	6	7	8	V
I <sub>GES</sub>	Gate leakage current	±V <sub>GE</sub> = V <sub>GES</sub> , V <sub>CE</sub> = 0V	—	—	0.5	µA
V <sub>CE(sat)</sub>	Collector-emitter saturation voltage	I <sub>C</sub> = 75A, V <sub>GE</sub> = 15V	—	T <sub>j</sub> = 25°C 2.1	3.0	V
		T <sub>j</sub> = 125°C 2.4		—		
C <sub>ies</sub>	Input capacitance	V <sub>CE</sub> = 10V V <sub>GE</sub> = 0V	—	—	11.5	nF
C <sub>oes</sub>	Output capacitance		—	—	1.0	nF
C <sub>res</sub>	Reverse transfer capacitance		—	—	0.23	nF
Q <sub>G</sub>	Total gate charge	V <sub>CC</sub> = 600V, I <sub>C</sub> = 75A, V <sub>GE</sub> = 15V	—	338	—	nC
t <sub>d(on)</sub>	Turn-on delay time	V <sub>CC</sub> = 600V, I <sub>C</sub> = 75A V <sub>GE</sub> = ±15V R <sub>G</sub> = 4.2Ω, Inductive load I <sub>E</sub> = 75A	—	—	100	ns
t <sub>r</sub>	Turn-on rise time		—	—	50	ns
t <sub>d(off)</sub>	Turn-off delay time		—	—	300	ns
t <sub>f</sub>	Turn-off fall time		—	—	350	ns
t <sub>rr</sub> (Note 1)	Reverse recovery time		—	—	120	ns
Q <sub>rr</sub> (Note 1)	Reverse recovery charge		—	3	—	µC
V <sub>EC</sub> (Note 1)	Emitter-collector voltage	I <sub>E</sub> = 75A, V <sub>GE</sub> = 0V	—	—	3.8	V
R <sub>th(j-c)Q</sub>	Thermal resistance	IGBT part (1/6 module) <sup>*1</sup>	—	—	0.24	K/W
R <sub>th(j-c)R</sub>		FWDi part (1/6 module) <sup>*1</sup>	—	—	0.36	K/W
R <sub>th(c-f)</sub>	Contact thermal resistance	Case to heat sink, Thermal compound Applied (1/6 module) <sup>*2</sup>	—	0.085	—	K/W
R <sub>G</sub>	External gate resistance		4.2	—	63	Ω

\*1 : Case temperature (T<sub>C</sub>) measured point is just under the chips.

If you use this value, R<sub>th(t-a)</sub> should be measured just under the chips.

\*2 : Typical value is measured by using thermally conductive grease of λ = 0.9[W/(m • K)].

Note 1. I<sub>E</sub>, V<sub>EC</sub>, t<sub>rr</sub> & Q<sub>rr</sub> represent characteristics of the anti-parallel, emitter-collector free-wheel diode (FWDi).

2. Pulse width and repetition rate should be such that the device junction temperature (T<sub>j</sub>) does not exceed T<sub>jmax</sub> rating.

3. Junction temperature (T<sub>j</sub>) should not increase beyond 150°C.

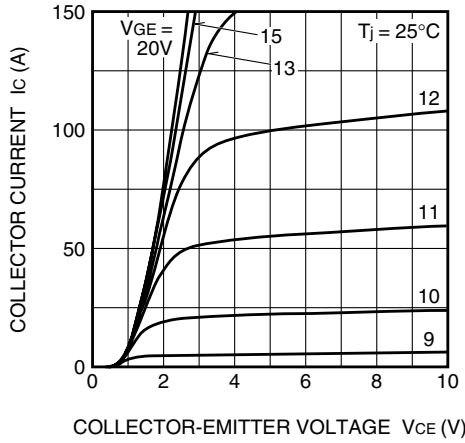
4. Pulse width and repetition rate should be such as to cause negligible temperature rise.

CM75TL-24NF

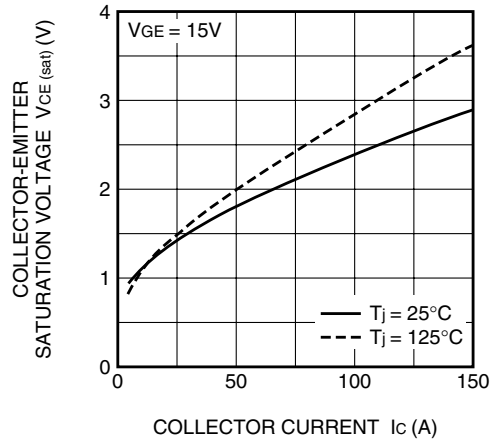
HIGH POWER SWITCHING USE

PERFORMANCE CURVES

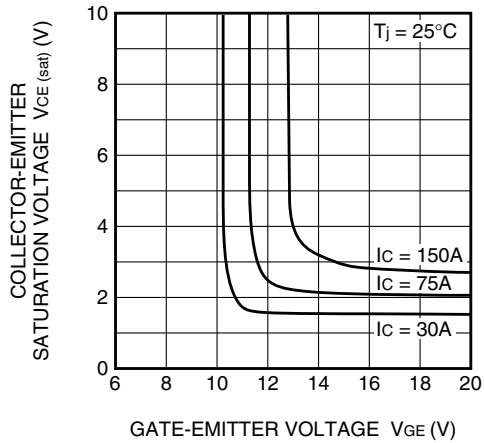
OUTPUT CHARACTERISTICS (TYPICAL)



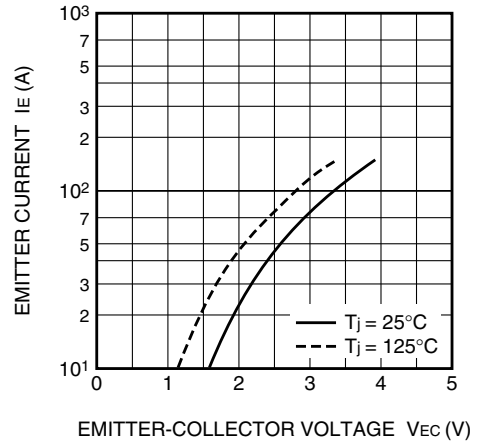
COLLECTOR-EMITTER SATURATION VOLTAGE CHARACTERISTICS (TYPICAL)



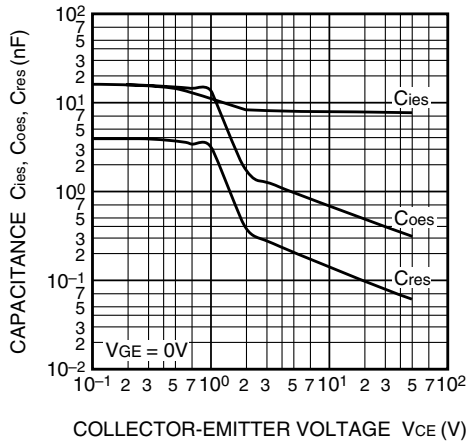
COLLECTOR-EMITTER SATURATION VOLTAGE CHARACTERISTICS (TYPICAL)



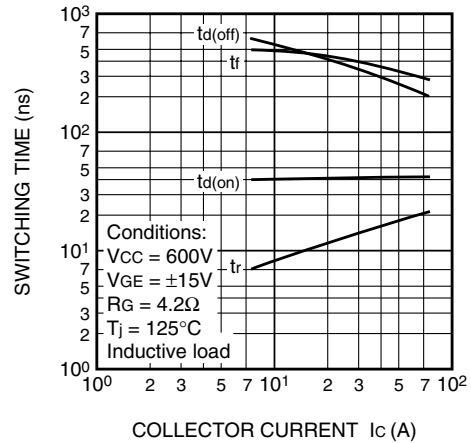
FREE-WHEEL DIODE FORWARD CHARACTERISTICS (TYPICAL)



CAPACITANCE-VCE CHARACTERISTICS (TYPICAL)



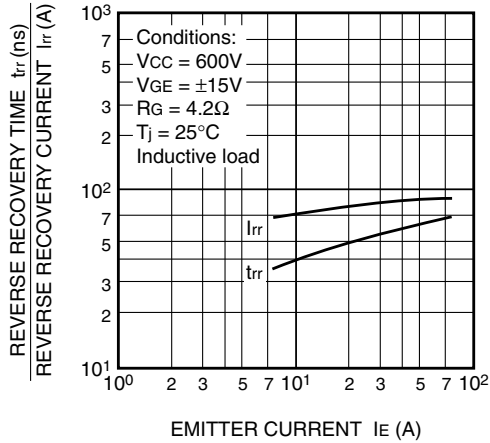
HALF-BRIDGE SWITCHING CHARACTERISTICS (TYPICAL)



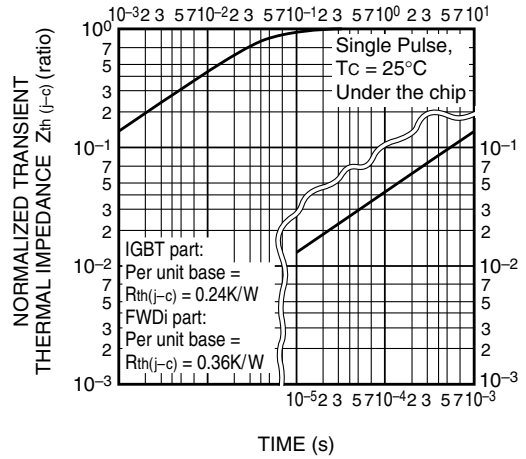
CM75TL-24NF

HIGH POWER SWITCHING USE

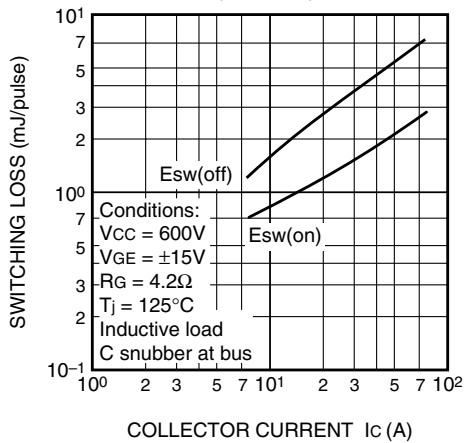
REVERSE RECOVERY CHARACTERISTICS OF FREE-WHEEL DIODE (TYPICAL)



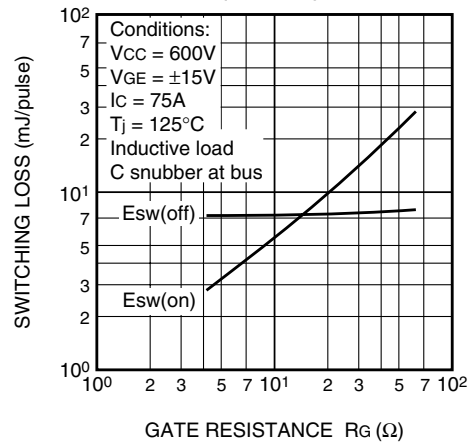
TRANSIENT THERMAL IMPEDANCE CHARACTERISTICS (IGBT part & FWDi part)



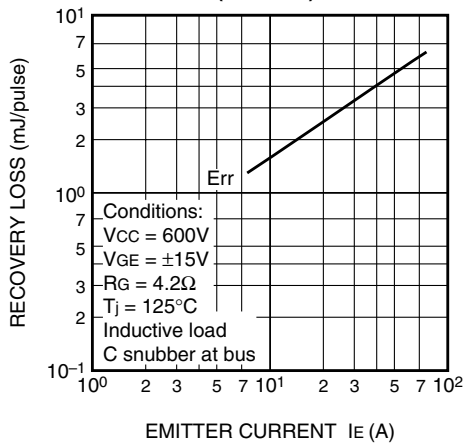
SWITCHING LOSS vs. COLLECTOR CURRENT (TYPICAL)



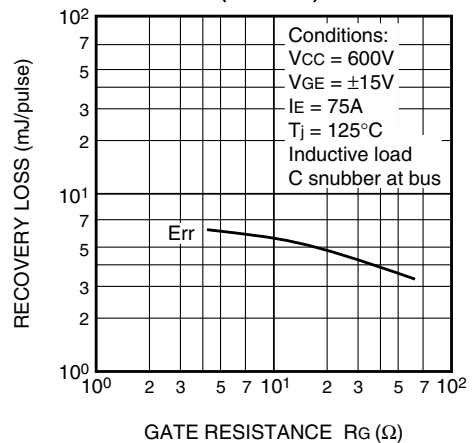
SWITCHING LOSS vs. GATE RESISTANCE (TYPICAL)



RECOVERY LOSS vs. IE (TYPICAL)



RECOVERY LOSS vs. GATE RESISTANCE (TYPICAL)



# CM75TL-24NF

HIGH POWER SWITCHING USE

---

