



TAI-SAW TECHNOLOGY CO., LTD.

No. 3, Industrial 2nd Rd., Ping-Chen Industrial District,
Tao-Yuan, 324, Taiwan, R.O.C.

TEL: 886-3-4690038 FAX: 886-3-4697532

E-mail: tstsales@mail.taisaw.com Web: www.taisaw.com

Approval Sheet for Product Specification

Issued Date:

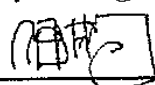
Product Name: 329.5MHz IF SAW Filter

TST Parts No.: TB0626A

Customer Parts No.: _____

Company: _____
Division: _____
Approved by : _____
Date: _____

Checked by: _____ Kazuma Lee 

Approval by: _____ Francis Chen 

Date: _____ 12/12/2008



TAI-SAW TECHNOLOGY CO., LTD.

No.3, Industrial 2nd Rd., Ping-Chen Industrial District, Taoyuan, Taiwan, R.O.C.

TEL: 886-3-4690038 FAX: 886-3-4697532

E-mail: tstsales3@mail.taisaw.com Web: www.taisaw.com

SAW Filter 329.5MHz (SMD 5.0×7.0 mm)

MODEL NO.: TB0626A

Rev No.2

A. MAXIMUM RATING:

1. Operating Temperature: -30 °C ~ 80 °C
2. Storage Temperature: -40 °C ~ +85 °C

RoHS Compliant
Lead free
Lead-free soldering

B. Characteristics :

1. Ambient Temperature: 25 °C

Item	Unit	Min.	TST	Max.
Center frequency, F_c	MHz	-	329.5	-
Minimum Insertion Loss, IL	dB	-	12.9	17.0
2dB Lower Frequency	MHz		321.1	322.0
2dB Upper Frequency	MHz	337.0	338.6	-
2dB Bandwidth	MHz	15.0	17.5	-
40dB Lower Frequency	MHz	317.0	318.7	-
40dB Upper Frequency	MHz		341.3	342.0
40 dB Bandwidth	MHz	-	22.7	-
Input VSWR (322-337MHz)	-	-	1.4	2.0
Output VSWR (322-337MHz)	-	-	1.3	2.0
Group Delay ripple (322-337MHz)	nS	-	86	120
Amplitude ripple (327-332MHz)	dB	-	0.6	1.0
Attenuation:(Reference level from Min IL)				
10~279.5MHz	dB	50	60	-
279.5MHz~309.5MHz	dB	45	53	-
349.5MHz~379.5MHz	dB	45	50	-
379.5MHz~450MHz	dB	50	60	-

C. FREQUENCY CHARACTERISTICS:

(1) S21 Response:(span 150MHz)

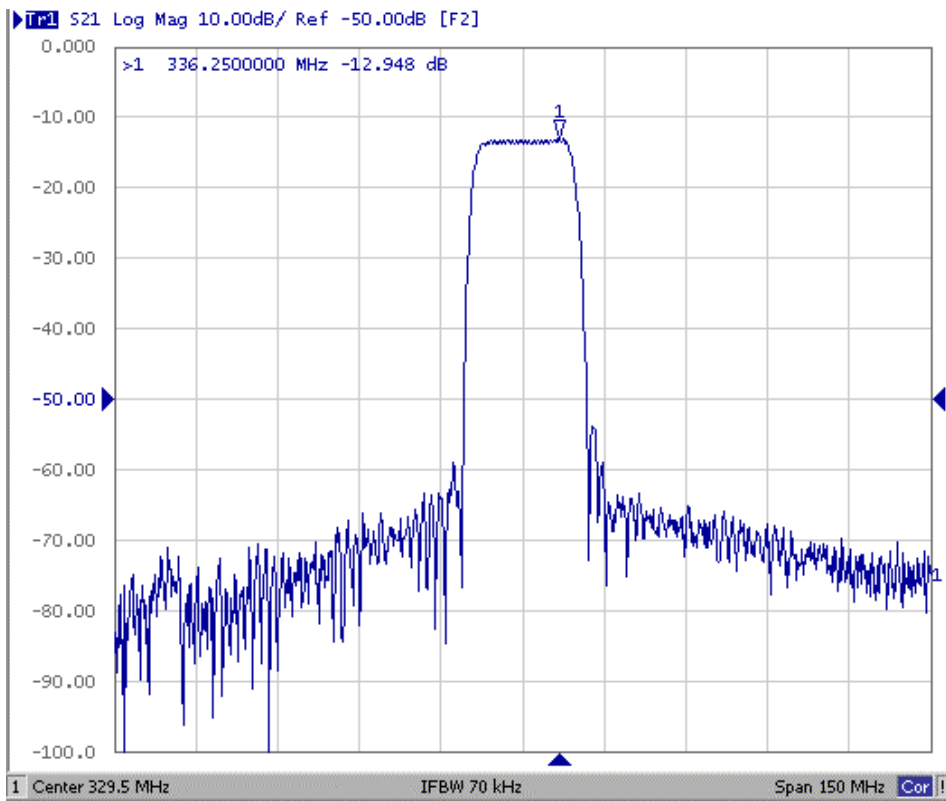


Fig1. Horizontal: 15MHz/Div Vertical: 10dB/Div

(2) S21 Response:(span 25MHz)

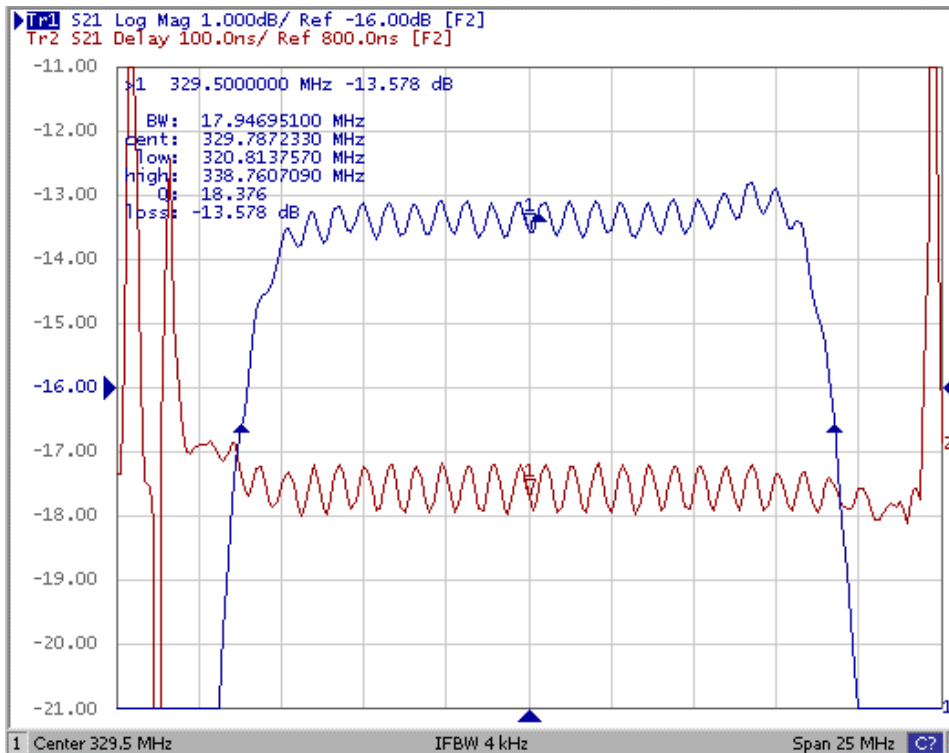
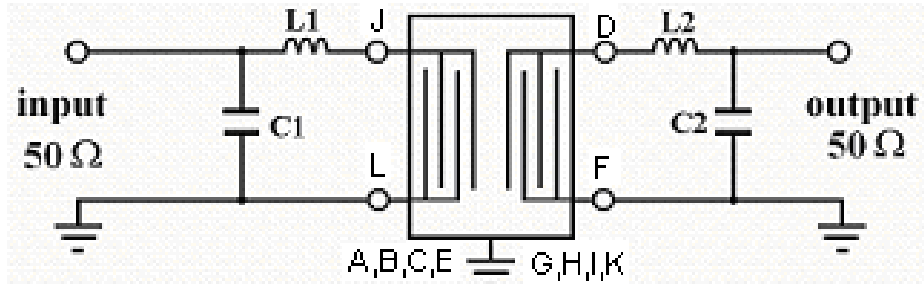


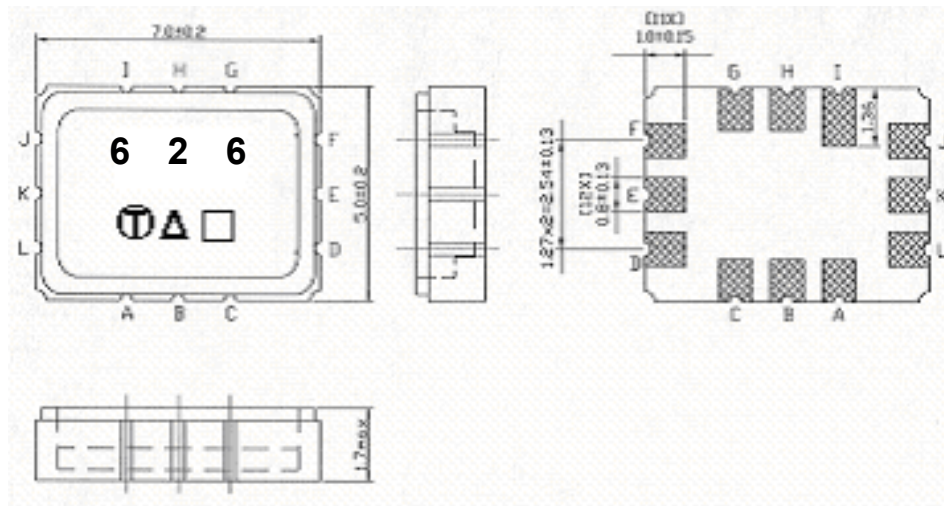
Fig2. Horizontal: 2.5MHz/Div Vertical: 1dB/Div
Vertical: 100ns/Div

D. TEST CIRCUIT:



L1=18nH L2=18nH C1=18pF C2=22pF

E. OUTLINE DRAWING:



Pin J : Unbalanced Input

Pin D: Unbalanced Output

Pin A, B, C, E, F, G, H, I, K, L : To be Ground

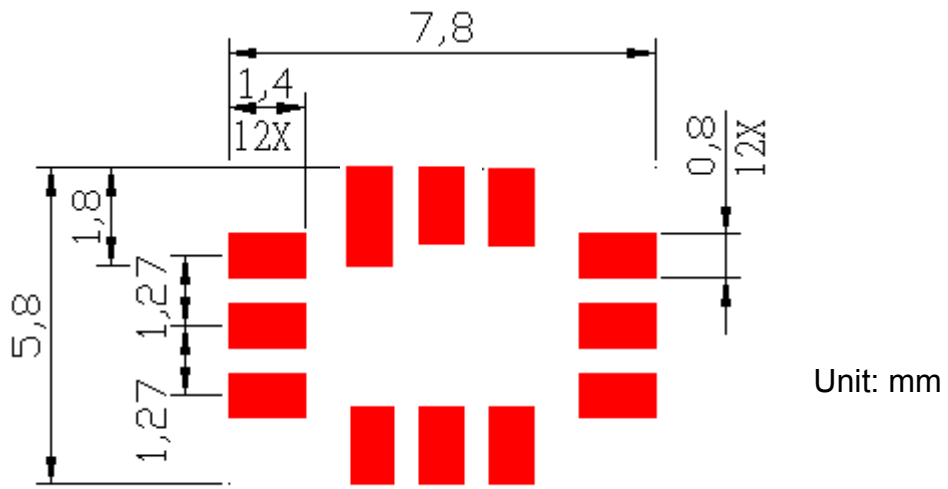
□ : Week Code (Follow the table from planner each year)

Unit : mm

△ : Product / Year Code

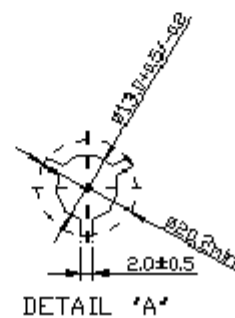
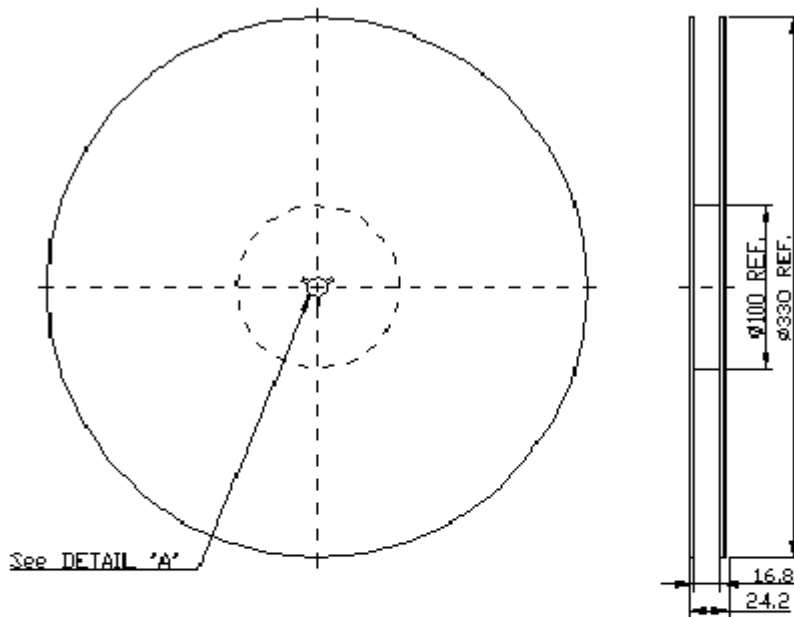
Year	2005 2009	2006 2010	2007 2011	2008 2012
Product Code	B	b	<u>B</u>	<u>b</u>

F. PCB Footprint

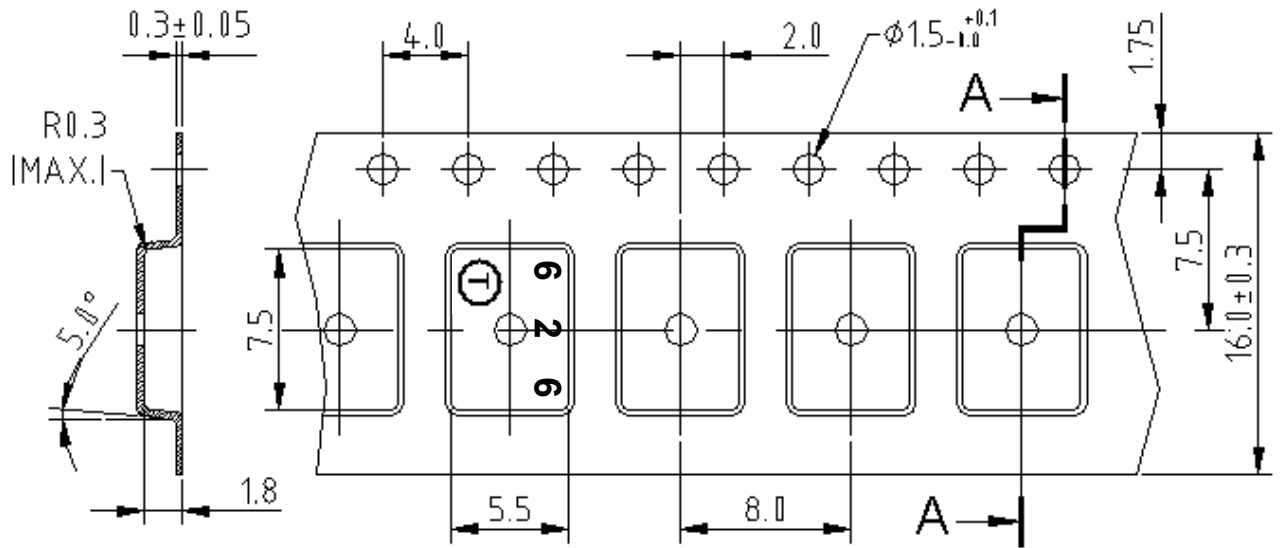


G. PACKING:

1. REEL DIMENSION



2. TAPE DIMENSION



H. RECOMMENDED REFLOW PROFILE:

