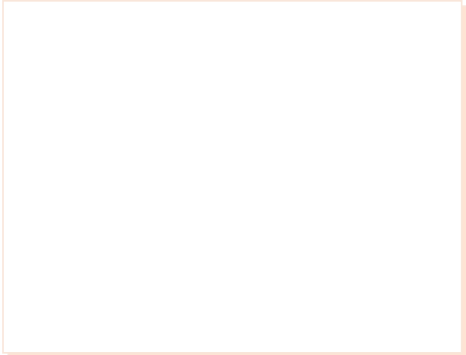


10 Base-T Multiport Module for LXT914

EPE6327S

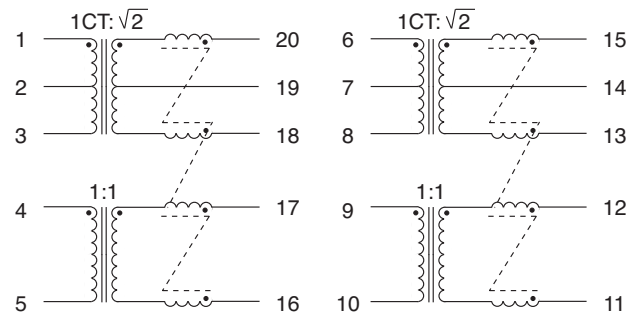


- Cost competitive solution for 2 port 10 Base-T switches •
- Also recommended for TI Dual PHY and similar dual chips •
- Robust design allows for most severe soldering processes •
 - Complies with or exceeds IEEE Requirements •
 - Operating Temperature Range -40°C to +85°C •

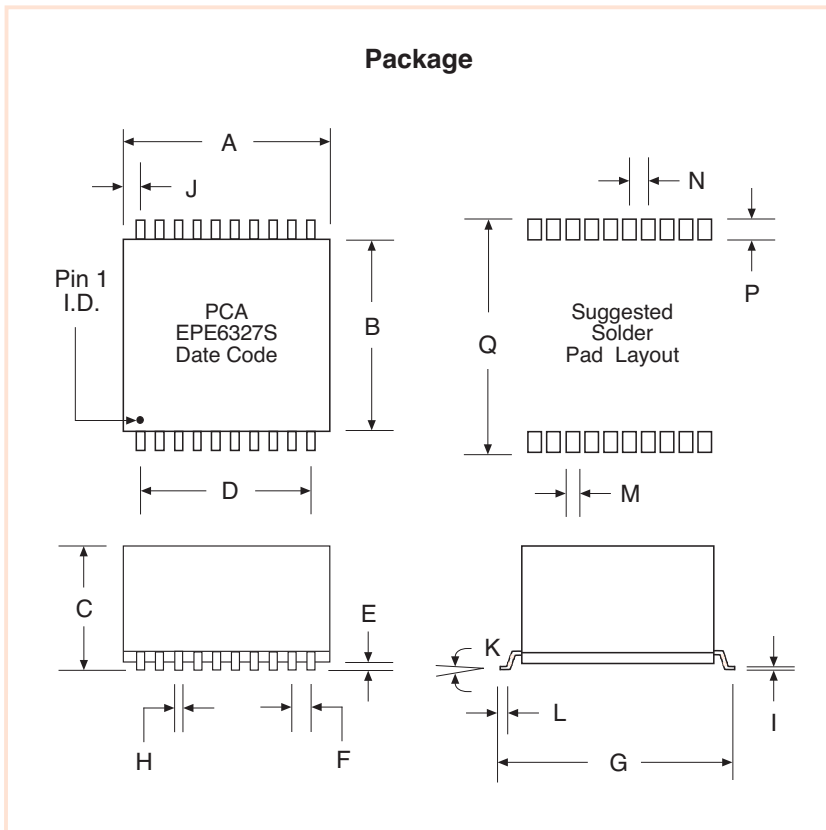
Electrical Parameters @ 25°C

Inductance (μ H Min.)	Return Loss (dB Min.)	Common Mode Rejection (dB Min.)				Isolation (Vrms)
		@ 1 - 30 MHz		@ 30 - 100 MHz		
@ 100 KHz, 0.1 Vrms	5 MHz - 10 MHz @ 100 Ω	Xmit	Rcv	Xmit	Rcv	
140	-15	-40	-20	-30	-15	1500

Schematic



Package



Dimensions

Dim.	(Inches)			(Millimeters)		
	Min.	Max.	Nom.	Min.	Max.	Nom.
A	.590	.610		25.15	25.40	
B	.490	.510		6.60	7.11	
C	.310	.330		7.87	8.38	
D	.450	Typ.		11.43	Typ.	
E	.010	.020		.254	.508	
F	.050	Typ.		1.27	Typ.	
G	.630	.650		10.16	10.67	
H	.016	.022		.406	.559	
I	.008	.012		.203	.305	
J	.075	Typ.		1.90	Typ.	
K	0°	8°		0°	8°	
L	.040	.060		1.02	1.52	
M			.030			.762
N			.050			1.27
P			.090			2.29
Q			.680			17.27