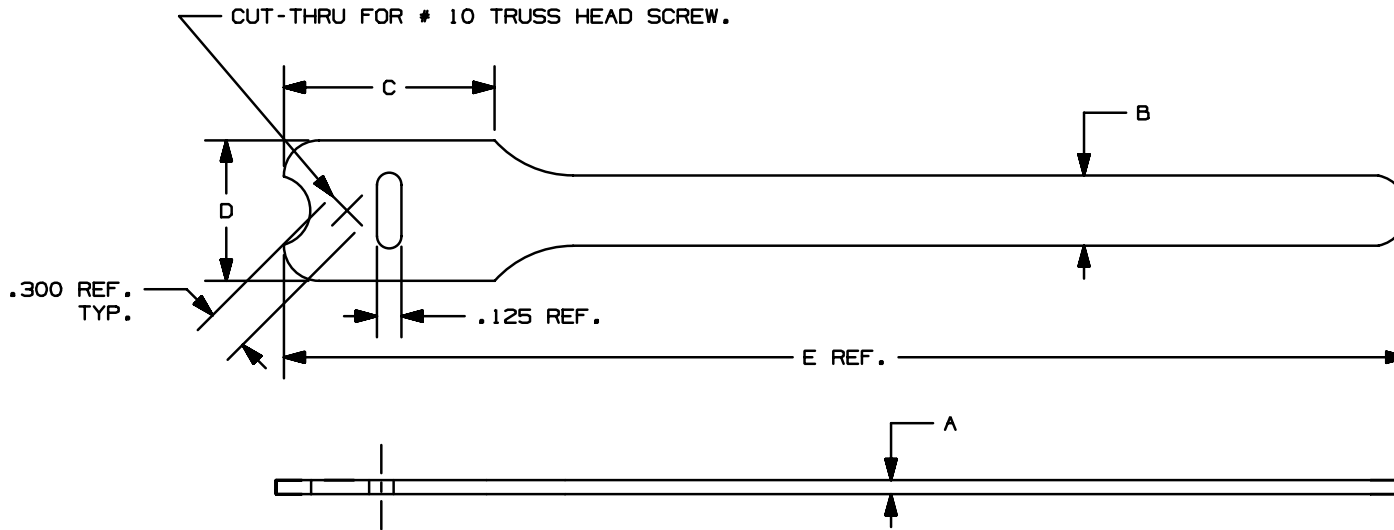


THIS COPY IS PROVIDED ON A RESTRICTED BASIS AND IS NOT TO BE USED IN ANY WAY DETRIMENTAL TO THE INTERESTS OF PANDUIT CORP.



| PANDUIT PART NO. | BUNDLE DIA. | | A in (mm) | B in (mm) | C in (mm) | D in (mm) | E in (mm) | MIN. LOOP * TENSILE lbs. (N) | CROSS SECTION |
|------------------|--------------|----------------|---------------|---------------|----------------|----------------|---------------|------------------------------------|---------------|
| | MIN. in (mm) | MAX. in (mm) | | | | | | | |
| HLT2I | .25 (6.4) | 1.91 (48.5) | .100 (2.5) | .50 (12.7) | 1.50 (38.1) | 1.00 (25.4) | 8.0 (203) | 40 (178) | INTERMEDIATE |
| HLT3I | .25 (6.4) | 3.18 (80.6) | .100 (2.5) | .50 (12.7) | 1.50 (38.1) | 1.00 (25.4) | 12.0 (305) | 40 (178) | INTERMEDIATE |

NOTES:

- 1) SEE CURRENT PRICE SHEET FOR PART NUMBER SUFFIX DESIGNATION FOR PACKAGE SIZE AND PART COLOR.
- * 2) MINIMUM 2" OVERLAP REQUIRED TO ACHIEVE LOOP TENSILE RATING.

| | | | | | | | CAD FILENAME/LAYERS | |
|-----|----------|----|-----|--|-------|---|---|-----|
| | | | | | | | DIMENSIONS IN PARENTHESIS ARE IN METRIC UNITS | |
| | | | | | | | SS_26938_04.PRT | |
| | | | | | | | PANDUIT CORP. TINLEY PARK, ILLINOIS | |
| | | | | | | | TAK-TY™ HOOK & LOOP CABLE TIES HLT SERIES | |
| 4 | 1/8/99 | KT | | (B) ADDED REF. TO SLOT AND CUT-THRU DIM. | 26938 | 4 | | |
| 3 | 10/22/98 | KT | HVP | (A) TAK-TY™ WAS VELCRO® | 26938 | 3 | | |
| 2 | 01/18/95 | KT | HVP | GENERAL REVISIONS (SEE ECN) | 26938 | 2 | | |
| 1 | 01/06/95 | KT | JAR | GENERAL REVISIONS (SEE ECN) | 26938 | 1 | | |
| R | 11/28/94 | KT | HVP | DRAWING RELEASED | 26938 | R | | |
| REV | DATE | BY | CHK | DESCRIPTION | ECN | R | CUST | SUP |
| | | | | | | | | |

| | | |
|--|---|---|
| UNLESS OTHERWISE SPECIFIED, DIMENSIONAL TOLERANCES ARE: (.X) ± (.XXX) ± .030 (.XX) ± .125 ANGLES ± | | UNLESS OTHERWISE SPECIFIED, ALL DIMENSIONS ARE GIVEN IN INCHES, THIRD ANGLE PROJECTION. |
| DRAWN BY KET | MAT'L: POLYETHYLENE HOOK/ NYLON KNIT LOOP | SCALE NONE |
| DATE 11/28/94 | CHK'D HVP | DWG NO. SS-26938 |
| | | DWG SIZE A |