

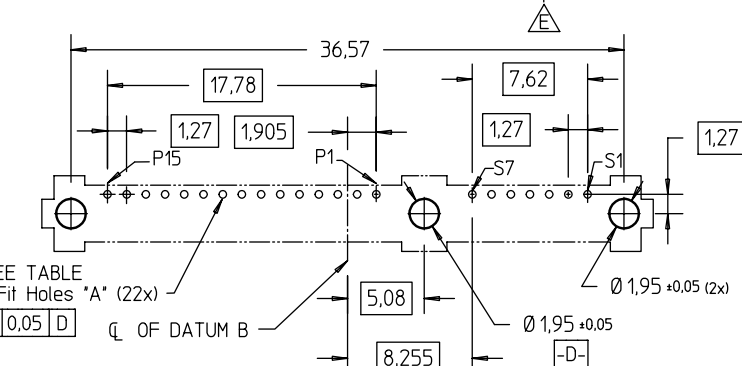
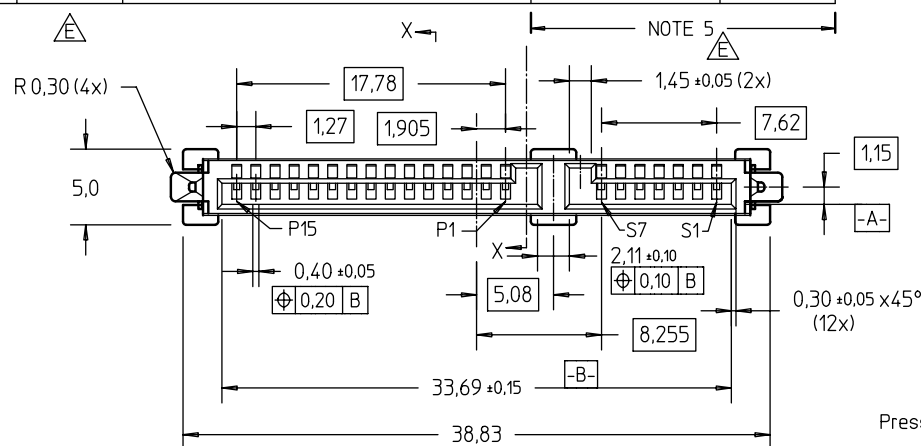
FCI CONFIDENTIAL



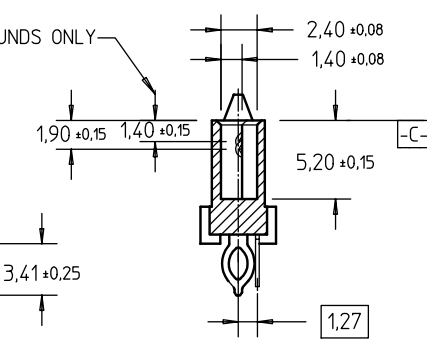
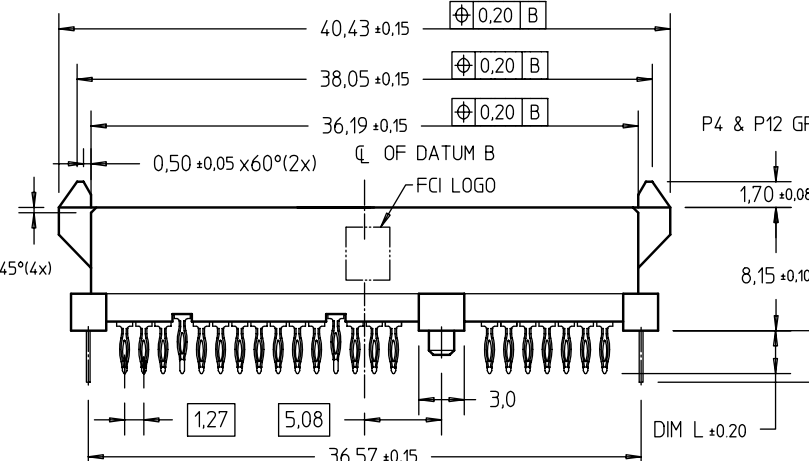
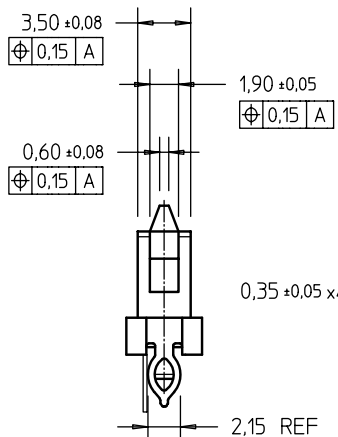
This document is the property of and embodies CONFIDENTIAL and PROPRIETARY information of FCI. No part of the information shown on this document may be used in any way or disclosed to others without the written consent of FCI. Copyright © FCI.

PRODUCT NO	DIM L	PLATING	RECOMMENDED P.C. BOARD THICKNESS	PRODUCT NO	PLATING
10022676-001LF	2.70	NOTE 2	1.57mm (0.062") / 2.36mm (0.093")	10022676-001	NOTE 5
10022676-011LF	3.70		2.36mm (0.093")	10022676-011	

Hole	A	REMARK
Hole Diameter after plating	0,45 - 0,55 mm	FOR -XXX & -XXXLF
Drilled hole	0,58 - 0,62 mm	
Copper plating	25 - 50 um	FOR -XXXLF ONLY
Sn Plating	5 - 15 um	FOR -XXX ONLY
Sn-Pd plating	5 - 15 um	FOR -XXX ONLY



RECOMMENDED P.C.B. LAYOUT



SECT X-X

**NOTES :**

- 1 MATERIAL:
  - 1) HOUSING : HIGH TEMP. THERMOPLASTIC, UL 94V-0 COLOR : BLACK
  - 2) TERMINAL : COPPER ALLOY
  - 3) HOLD DOWN : COPPER ALLOY
- 2 FINISH : FOR XXXXXXXX-XXXLF
  - 1) TERMINAL : 30u" Au PLATING (CONTACT POINT) OVER 50u" MIN NICKEL
  - 2) SOLDER TAIL : 20u" MIN -60u" MAX TIN-LEAD OVER 50u" MIN NICKEL
  - 3) HOLD DOWN : 50u" MIN TIN-LEAD OVER 50u" MIN NICKEL
- 3 TRUE POSITION NOTES APPLY AT (L= 2.70MM) TERMINAL TIP
- 4 PER S-ATA SPEC REV 1.0a
- 5 FINISH : FOR XXXXXXXX-XXX
  - 1) TERMINAL : 30u" Au PLATING (CONTACT POINT) OVER 50u" MIN NICKEL
  - 2) SOLDER TAIL : 20u" MIN -60u" MAX TIN-LEAD OVER 50u" MIN NICKEL
  - 3) HOLD DOWN : 50u" MIN TIN-LEAD OVER 50u" MIN NICKEL

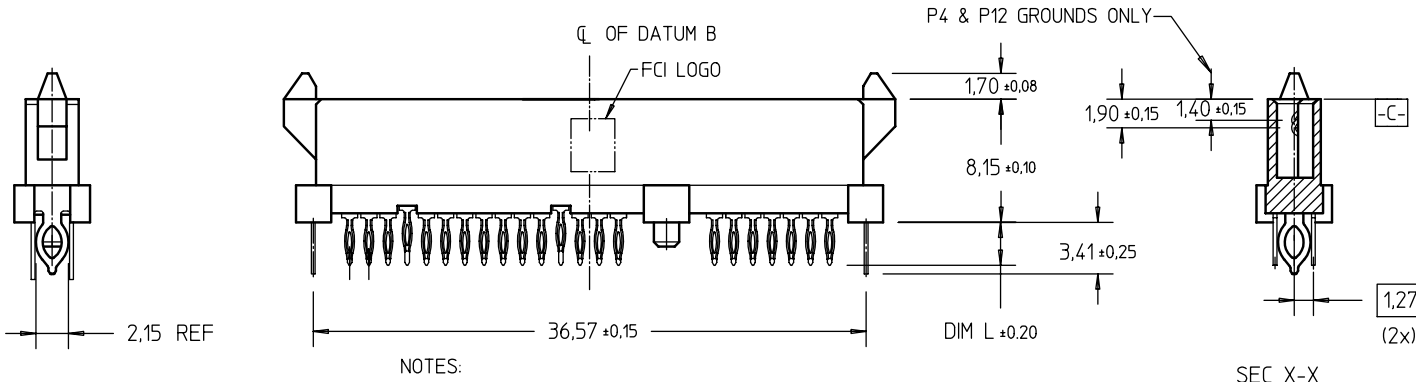
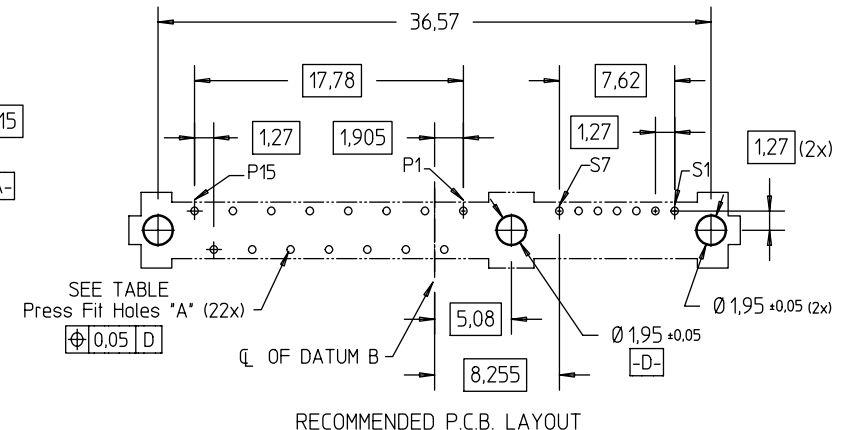
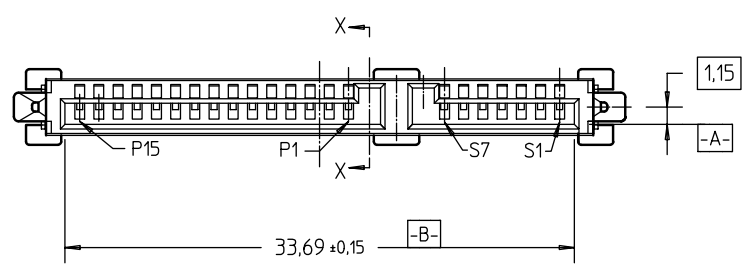
mat'l code		surface	tolerance	projection	product family
		ISO 1302	ISO 406 ISO 1101		S-ATA
itr		tolerances unless otherwise specified		title	
A	S04-0131	GLL	2004-10-05	S-ATA COMB RECEP.	
B	S05-0035	GLL	2005-02-07	VERTICAL PF TYPE ASSY	
C	S06-0312	GLL	2006-09-19	scale 2 : 1	
D	S09-0179	GLL	2009-05-28	dwg no	
E	S09-0305	GLL	2009-09-23	sheet 1 of 2	
		chr	GL L00	size	
		appd	JOEY NG	A4	
sheet index		revision sheet	E 1	type CUSTOMER Drawing	

FCI CONFIDENTIAL



This document is the property of and embodies CONFIDENTIAL and PROPRIETARY information of FCI. No part of the information shown on this document may be used in any way or disclosed to others without the written consent of FCI. Copyright © FCI.

PRODUCT NO	DIM L	PLATING	RECOMMENDED P.C. BOARD THICKNESS	PRODUCT NO	PLATING
10022676-002LF	2.70	NOTE 2	1.57mm (0.062") / 2.36mm (0,093")	10022676-002	NOTE 5
10022676-012LF	3.70		2,36mm (0,093")	10022676-012	



NOTES:  
ALL OTHER DIMENSIONS, REFER TO SHEET 1.

- NOTES :
- 6 THE HOUSING WILL WITHSTAND EXPOSURE TO 260°C PEAK TEMPERATURE FOR 10 SECONDS IN A CONVECTION, INFRA-RED OR VAPOR PHASE REFLOW OVEN.
  - 7 THIS PRODUCT MEETS EUROPEAN UNION DIRECTIVES AND OTHER COUNTRY REGULATIONS AS DESCRIBED IN GS-22-008.
  - 8 PART NUMBERS ENDING IN "LF" MEANS FOR NOTE 7 LEAD FREE IDENTIFICATION.
  - 9 A  $\triangle$  SYMBOL WILL BE NEXT TO ANY DIMENSION, VIEW, OR NOTE WHICH HAS BEEN MODIFIED WITH THE CURRENT DRAWING REVISION.
  - 10 THE STD PACKAGING IS IN TRAY.
  - 11 NOTE 7 AND 8 DO NOT APPLY TO TIN LEAD PLATING P/N XXXXXXXX-XXX IN TABLE.

mat'l. code		surface <input checked="" type="checkbox"/> ISO 1302	tolerance <input checked="" type="checkbox"/> ISO 406 <input type="checkbox"/> ISO 1101	projection	product family
ltr	ecn no	dr	date	tolerances unless otherwise specified	S-ATA
E				angles linear = ±0.20	title
				± 2°	S-ATA COMB RECP. VERTICAL PF TYPE ASSY
				mm scale 2 : 1	dwg no
					10022676
					sheet 2 of 2 size
					A4
					type CUSTOMER Drawing
sheet index	revision sheet	1			