



IRT1

Infrared Pulse Transmitter

General description

The IRT1 is an hybrid circuit that allows to realize an infrared barrier when utilized with an infrared pulse detector (IRD1).

It shows stable electric characteristics thanks to the "Thick film hybrid" technology.



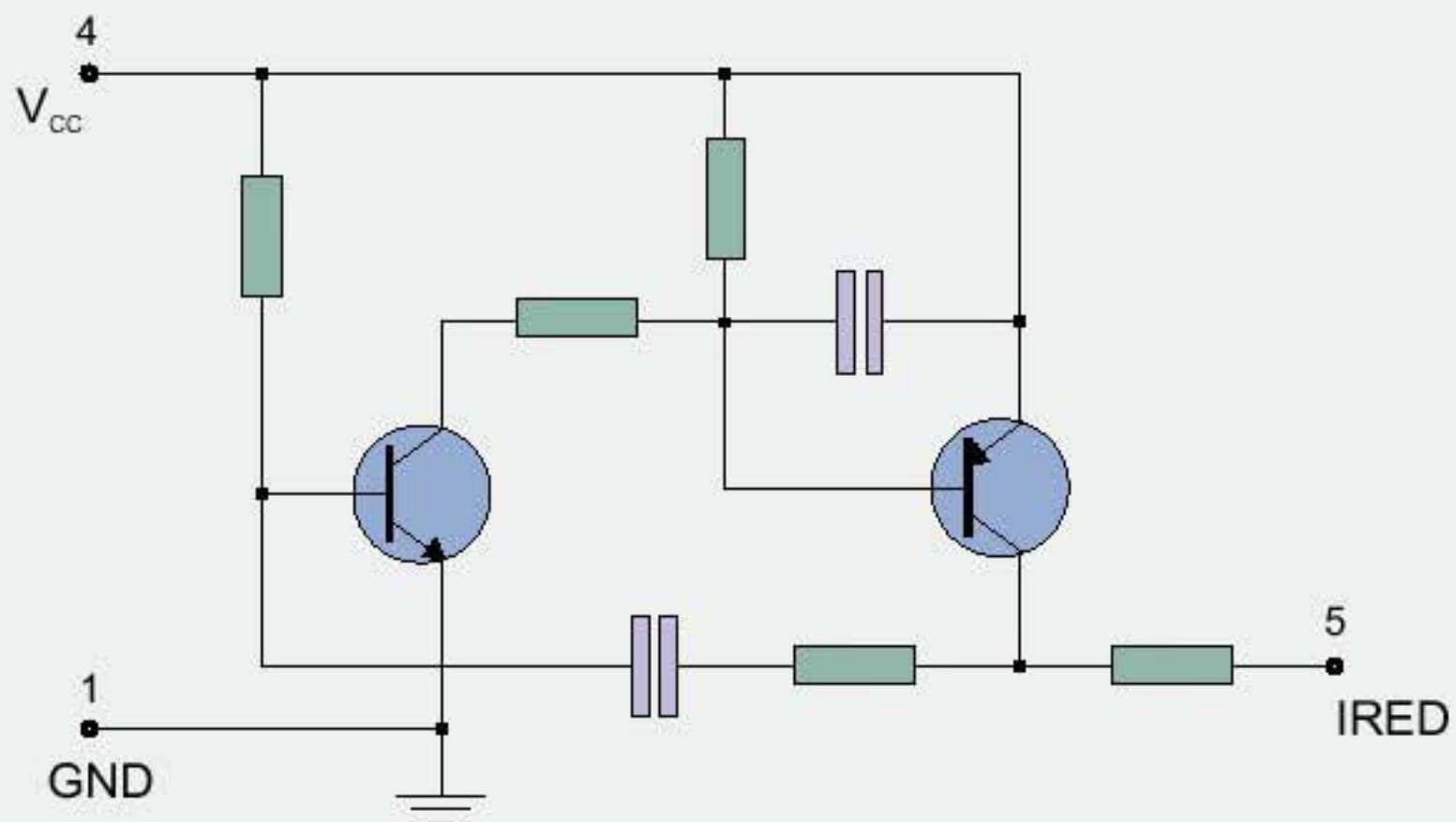
Features

- High RFI Immunity
- SIL Package

Applications

- Residential and commercial security systems
- Automatic doors opening systems

BLOCK DIAGRAM



Electrical Characteristics

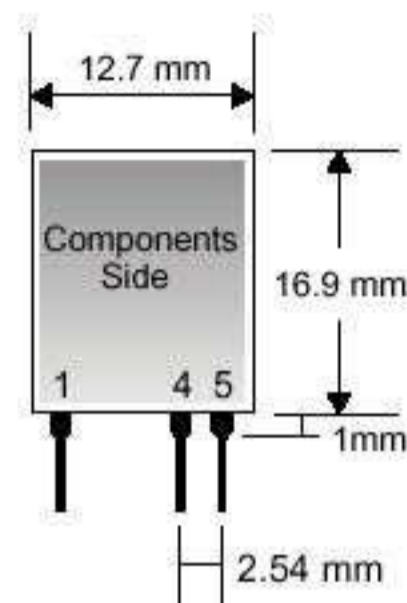
Ta = 25°C unless otherwise specified

CHARACTERISTICS	MIN	TYP	MAX	UNIT
V _{CC} Supply Voltage	8	9	10	VDC
I _S Supply Current		35		mA
F _{IR} Infrared Pulse Frequency	300	400		Hz
T _p Pulse Width		40		µsec
T _{OP} Operating Temperature Range	-20		+80	°C

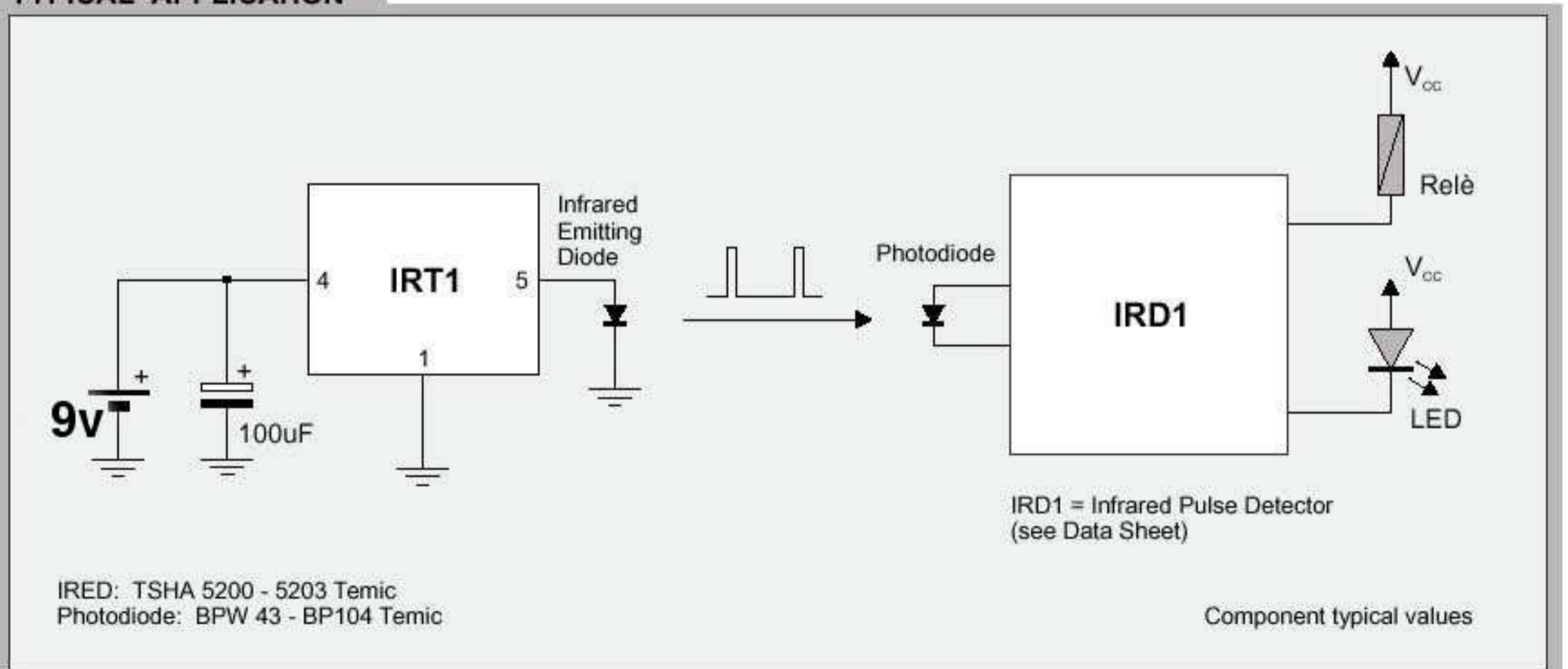
Pin Description

1	GND	Ground
4	V _{CC}	Supply Voltage
5	IRED	Infrared Emitting Diode

Mechanical Dimensions



TYPICAL APPLICATION



R. F. Solutions Ltd.,
Unit 21, Cliffe Industrial Estate,
South Street, Lewes,
E Sussex, BN8 6JL, England.
Tel +44 (0)1273 898 000. Fax +44 (0)1273 480 661.
Email sales@rfsolutions.co.uk
http://www.rfsolutions.co.uk

RF Solutions is a member of the Low Power Radio Association.