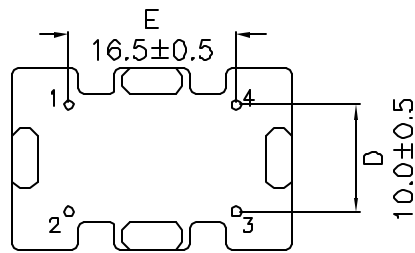
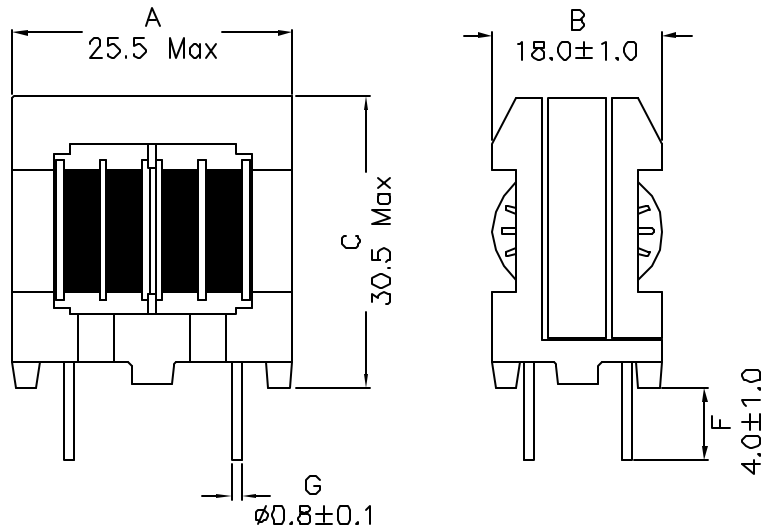
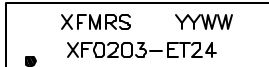


1. Mechanical Dimensions:

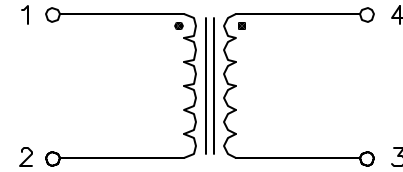


(BOTTOM VIEW)

Marking: (on TOP)



2. Schematic:



3. Electrical Specifications:

- OCL: 20.0mH Min @10KHz 0.1V, Each Wdg
- DCR: 0.700 Ohms Max, Each Wdg
- Rated Current: 0.8Arms Max
- HIPOT: 2000Vac 1 min, Wdg to Wdg

Notes:

1. Solderability: Leads shall meet MIL-STD-2026, Method 208H for solderability.
2. Flammability: UL94V-0
3. ASTM oxygen index: > 28%
4. Insulation System: Class F 155°C, UL file E151558
5. Operating Temperature Range: All listed parameters are to be within tolerance from -40°C to +85°C
6. Storage Temperature Range: -55°C to +125°C
7. Aqueous wash compatible
8. Electrical and mechanical specifications 100% tested
9. RoHS Compliant Component

DOC REV: A/3

PROPRIETARY

Document is the property of XFMRS Group & is not allowed to be duplicated without authorization.

XFMRS Inc www.XFMRS.com		Title: COMMON MODE CHOKE	
UNLESS OTHERWISE SPECIFIED TOLERANCES: .xx ±0.25 Dimensions in mm Scale 2:1 SHT 1 OF 1	P/N: XF0203-ET24		REV. A
	DWN.	刘 鹏	Nov-15-06
	CHK.	李小锋	Nov-15-06
APP.	MS	Nov-15-06	