



P/N 08-305984-10, 08-305984-11 or 08-307472-10 Adapter for Aromat HB2E Relay w/SM Type TX2SA

FEATURES

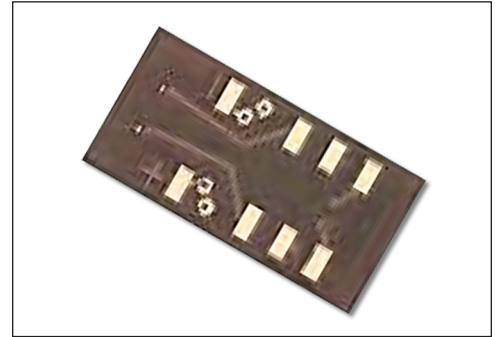
- A cost-effective means of upgrading to SOIC without changing your PCB layout.
- Available on 0.300 [7.62] centers.

GENERAL SPECIFICATIONS

- BOARD MATERIAL: 0.062 thick FR-4 with 1-oz. Cu traces, both sides
- PINS: Brass 360 1/2-hard per UNS C36000, ASTM B16/B16M
- PIN PLATING: 200 μ [5.08 μ] 93/7 Sn/Pb per ASTM B579-73 over 100 μ [2.54 μ] Ni per SAE AMS-QQ-N-290
- OPERATING TEMPERATURE: 221°F [105°C]

MOUNTING CONSIDERATIONS

- SUGGESTED PCB HOLE SIZE: 0.028 \pm 0.003 [0.71 \pm 0.08] dia.



CUSTOMIZATION: In addition to the standard products shown on this page, Aries specializes in custom design and production. Special materials, platings, sizes, and configurations can be furnished, depending on the quantity. **NOTE:** Aries reserves the right to change product general specifications without notice.

ORDERING INFORMATION

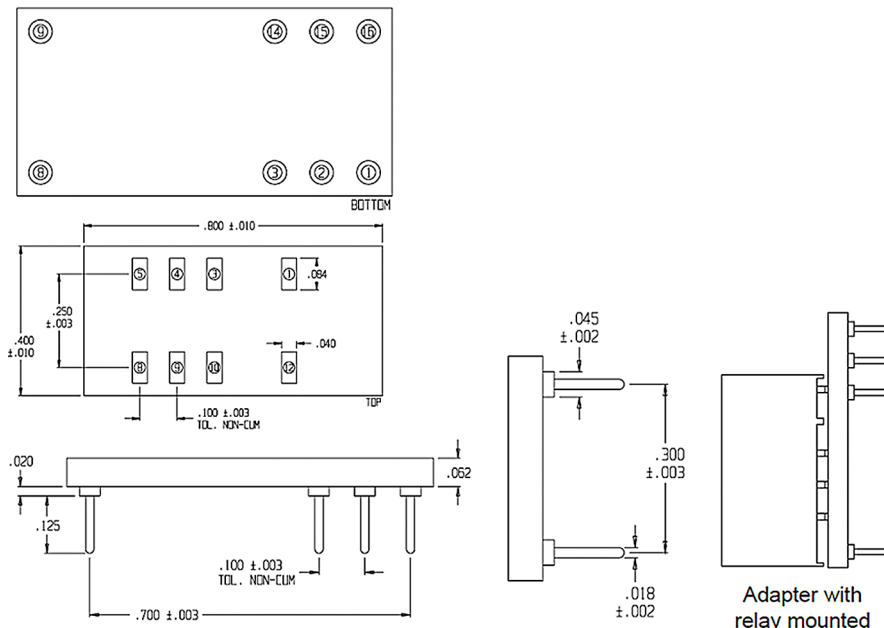
P/N 08-305984-11

P/N 08-307472-11 w/Aries TX2SA-12V
Relay Mounted

ALL DIMENSIONS: INCHES [MILLIMETERS]

ALL TOLERANCES: \pm 0.005 [0.13] UNLESS OTHERWISE SPECIFIED

CONSULT FACTORY FOR OTHER SIZES AND CONFIGURATIONS



| Standard Polarity Connection List 08-305084-10 | |
|---|---------------|
| Top TX Pad | Bottom HB Pin |
| 1 | 3 |
| 3 | 1 |
| 4 | 8 |
| 5 | 2 |
| 8 | 15 |
| 9 | 9 |
| 10 | 16 |
| 12 | 14 |

| Reverse Polarity Connection List 08-307472-10 | |
|--|---------------|
| Top TX Pad | Bottom HB Pin |
| 1 | 14 |
| 3 | 1 |
| 4 | 8 |
| 5 | 2 |
| 8 | 15 |
| 9 | 9 |
| 10 | 16 |
| 12 | 3 |



Bristol, PA 19007-6810 USA
TEL (215) 781-9956 • FAX (215) 781-9845
WWW.ARIESELEC.COM • INFO@ARIESELEC.COM

