



# TAI-SAW TECHNOLOGY CO., LTD.

No. 3, Industrial 2nd Rd., Ping-Chen Industrial District,  
Taoyuan, 324, Taiwan, R.O.C.

TEL: 886-3-4690038 FAX: 886-3-4697532

E-mail: [tstsales@mail.taisaw.com](mailto:tstsales@mail.taisaw.com) Web: [www.taisaw.com](http://www.taisaw.com)

## Approval Sheet For Product Specification

Issued Date:

Product Name: SAW Filter 881.5MHz SMD 3.0×3.0mm

TST Parts No.:TA0626A

Customer Parts No.:\_\_\_\_\_

Company: _____
Division: _____
Approved by : _____
Date: _____

Checked by: \_\_\_\_\_ Asin Lin

Approval by: \_\_\_\_\_ Francis Chen

Date: \_\_\_\_\_ 2007/04/16



# TAI-SAW TECHNOLOGY CO., LTD.

No. 3, Industrial 2nd Rd., Ping-Chen Industrial District,  
Taoyuan, 324, Taiwan, R.O.C.

TEL: 886-3-4690038 FAX: 886-3-4697532

E-mail: [tstsales@mail.taisaw.com](mailto:tstsales@mail.taisaw.com) Web: [www.taisaw.com](http://www.taisaw.com)

## SAW Filter 881.5 MHz

MODEL NO.: TA0626A

V2.0

### A. MAXIMUM RATING:

1. Input Power Level: 10 dB<sub>m</sub>
2. DC voltage: 3 V
3. Operating Temperature: -25°C to 75°C
4. Storage Temperature: -40°C to +85°C

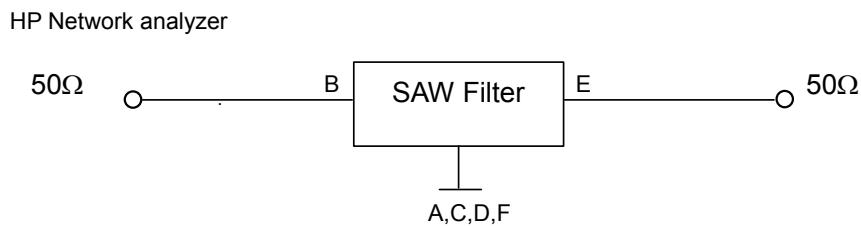
RoHS Compliant  
Lead free  
Lead-free soldering

### B. CHARACTERISTICS:

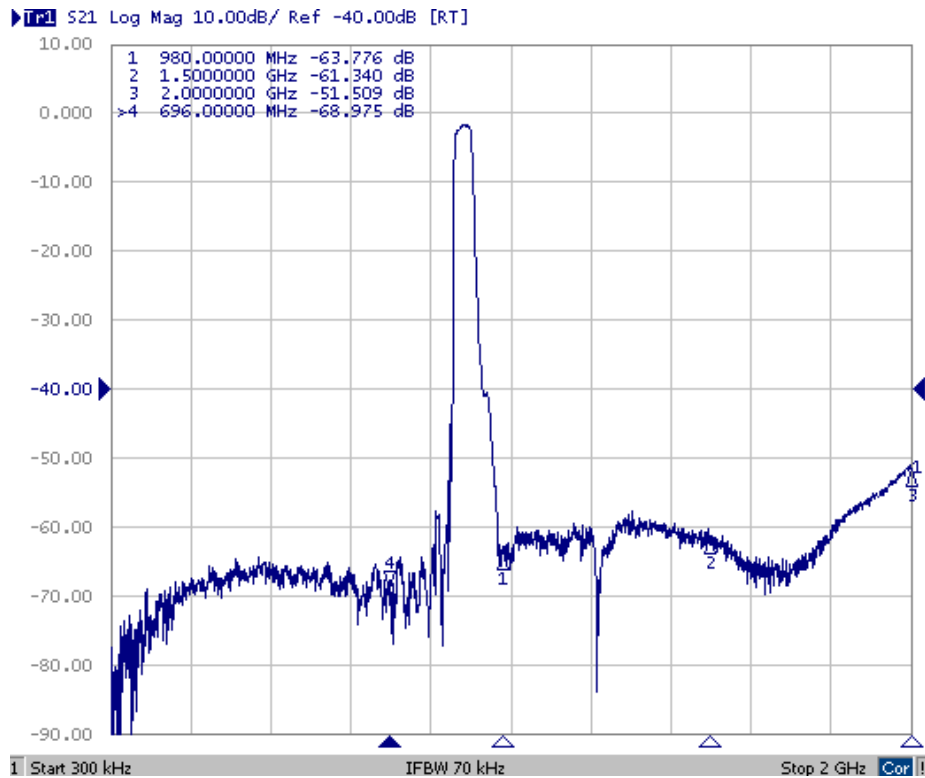
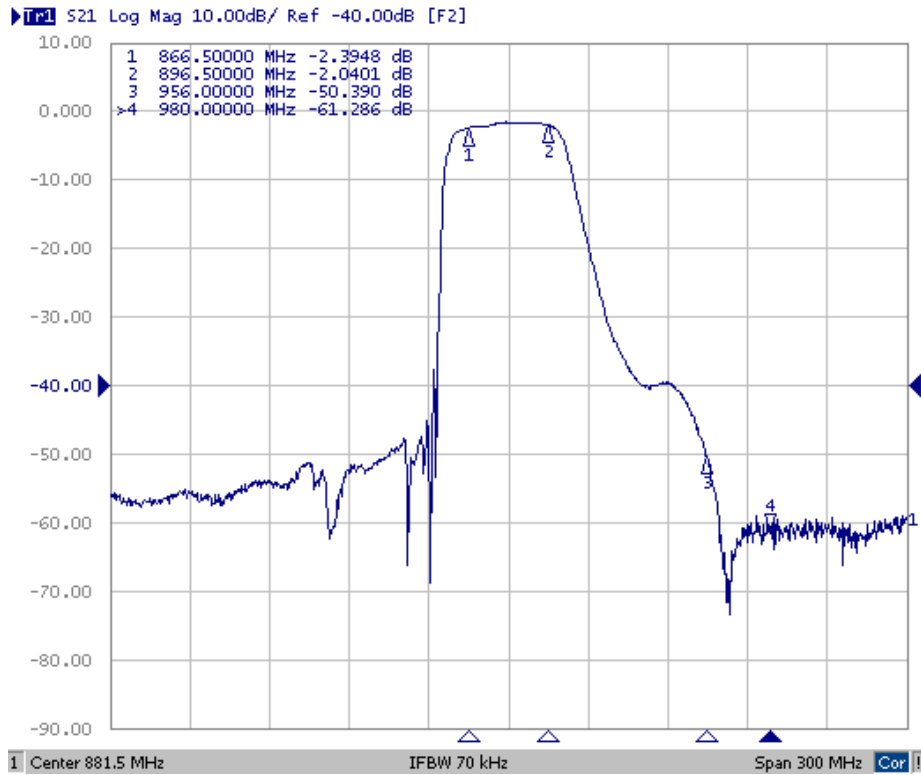
Item		Specification			
		Unit	Min.	Typ.	Max.
Center Frequency	F <sub>c</sub>	MHz	-	881.5	-
<b>Insertion loss</b>	(866.5~896.5 MHz) <b>IL</b>	dB	-	3.0	4.0
<b>Amplitude ripple</b>	(866.5~896.5 MHz)	dB		0.8	2.0
<b>VSWR</b>	(866.5~896.5 MHz)			1.5	2.2
<b>Rejection (referent to 0dB)</b>					
D.C ~ 696	MHz	dB	50	58	-
956 ~ 980	MHz	dB	38	46	-
980 ~ 1500	MHz	dB	50	57	-
1500 ~ 2000	MHz	dB	30	45	-

Note1. No matching network required for operation at 50Ω

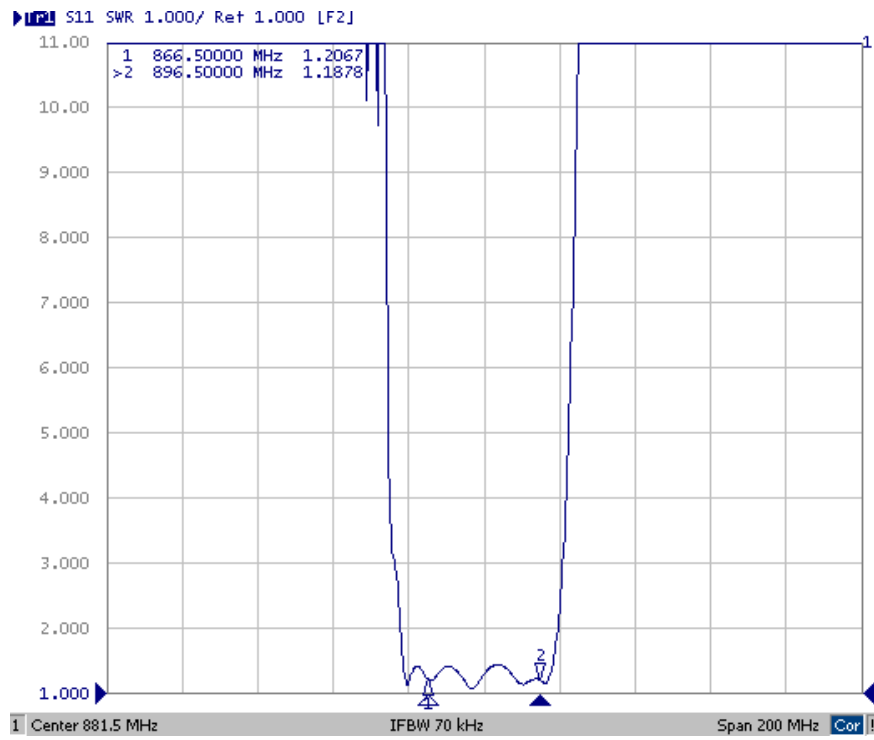
### C. MEASUREMENT CIRCUIT:



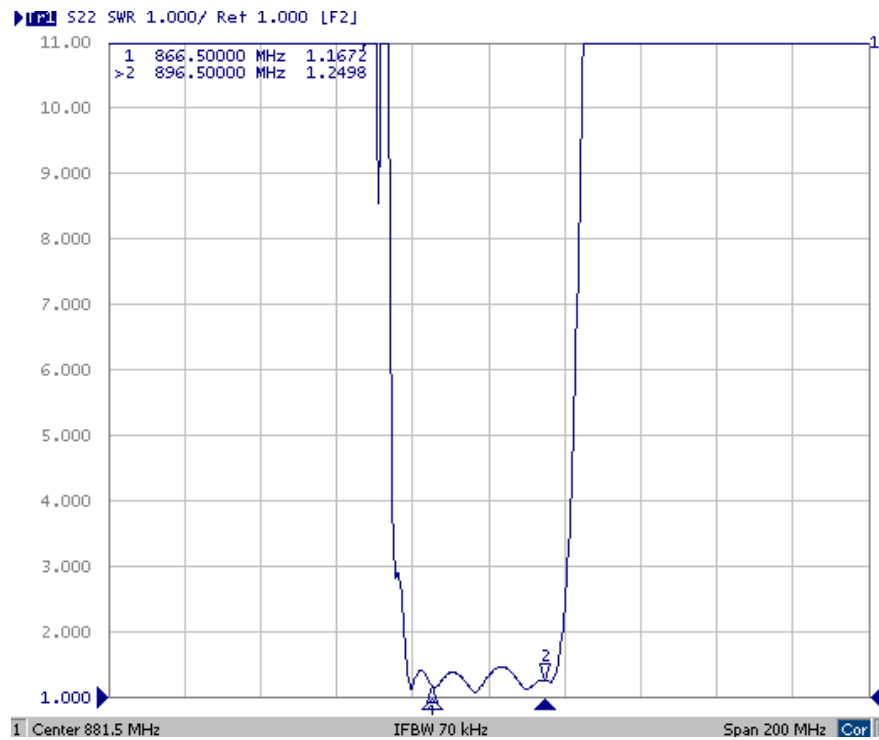
## D. TRANSFER FUNCTION :



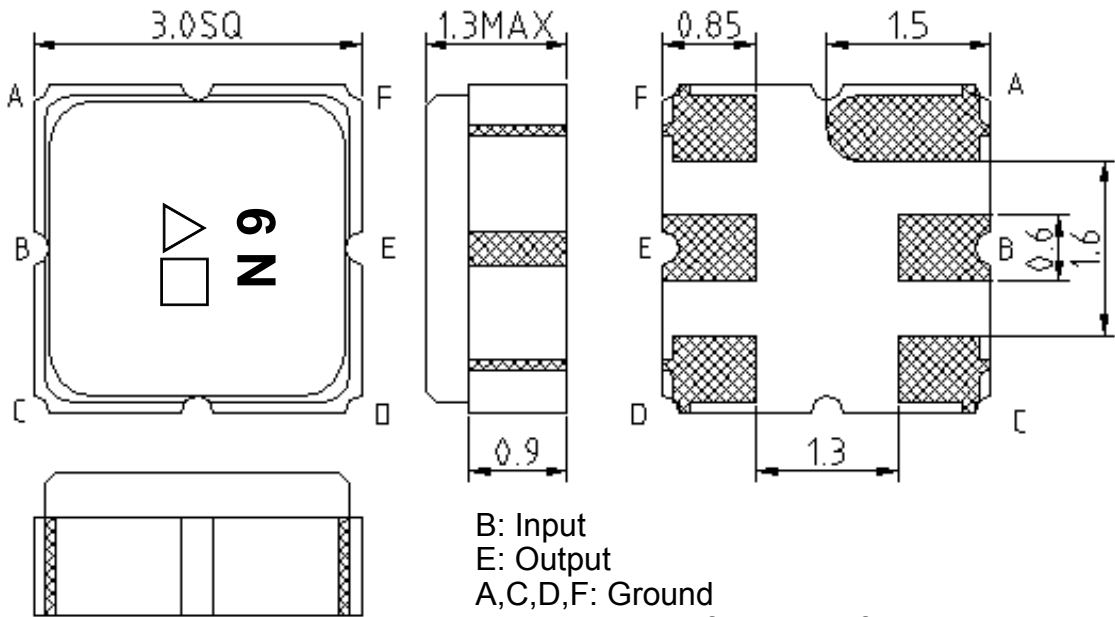
# VSWR S11



# VSWR S22

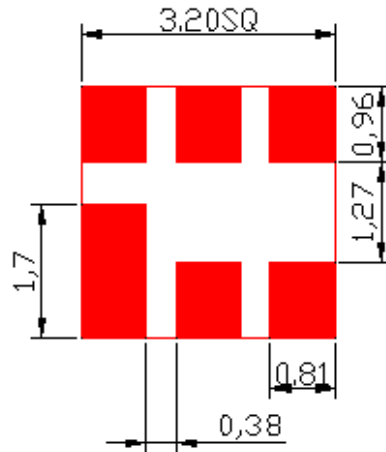


**E.OUTLINE DRAWING:**



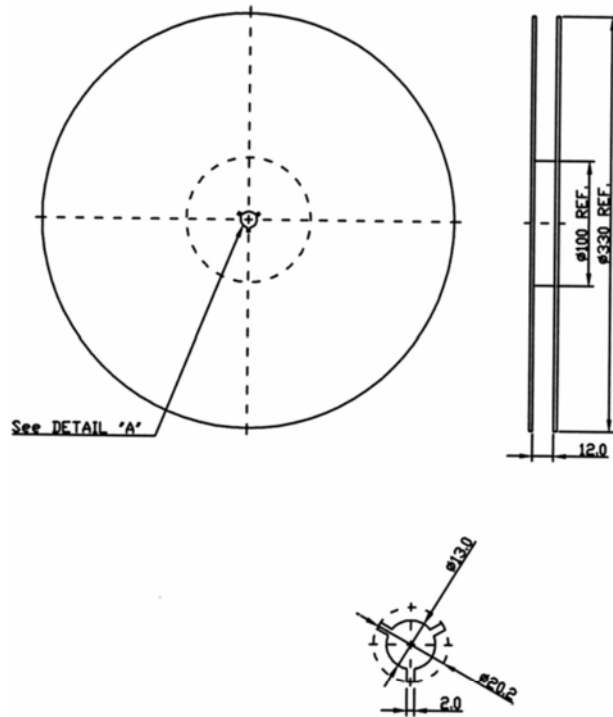
B: Input  
 E: Output  
 A,C,D,F: Ground  
 △: Year code(6 for 2006,7 for 2007,...)  
 □: Date code code (Provided by planer each year)  
 Unit: mm

**F.PCB FOOTPRINT:**

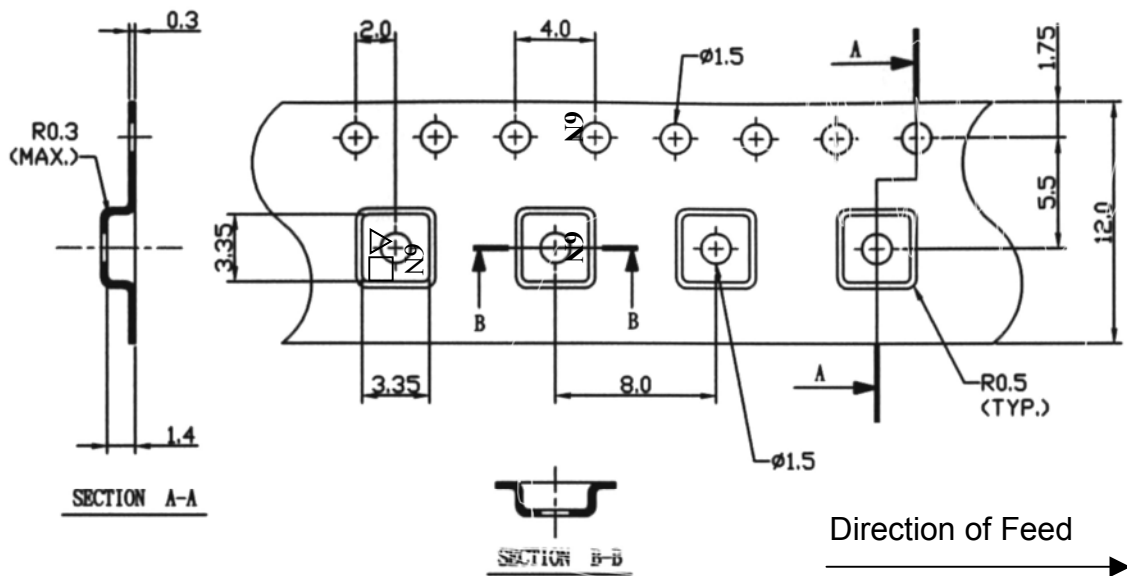


## G. PACKING:

### 1. REEL DIMENSION



### 2. TAPE DIMENSION



### H.RECOMMENDED REFLOW PROFILE:

