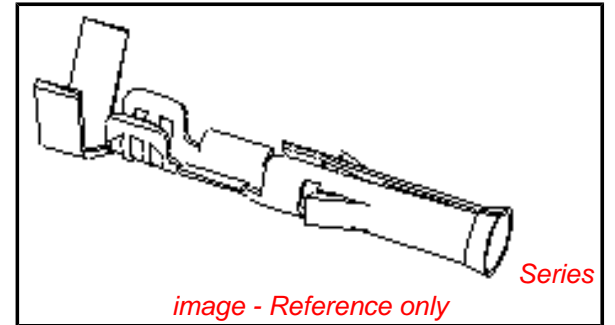


PLEASE CHECK WWW.MOLEX.COM FOR LATEST PART INFORMATION

Part Number: [0002091122](#)
Status: **Active**
Overview: [standard_093](#)
Description: 2.36mm (.093") Diameter, Standard .093" Pin and Socket Crimp Terminal, Series 2273, Female, with Tin (Sn) Plated Contact, Low Engagement Force, 18-22 AWG, Reel

Documents:

[Drawing \(PDF\)](#) [RoHS Certificate of Compliance \(PDF\)](#)
[Product Specification PS-02-09 \(PDF\)](#)



General

Product Family	Crimp Terminals
Series	2273
Comments	Low Engagement Force
Crimp Quality Equipment	Yes
Overview	standard_093
Product Name	Standard .093"

Physical

Gender	Female
Material - Metal	Brass
Material - Plating Mating	Tin
Material - Plating Termination	Tin
Packaging Type	Reel
Plating min: Mating (µin)	20
Plating min: Mating (µm)	0.50
Plating min: Termination (µin)	20
Plating min: Termination (µm)	0.50
Termination Interface: Style	Crimp or Compression
Wire Insulation Diameter	1.52-3.05mm (.060-.120")
Wire Size AWG	18, 20, 22
Wire Size mm²	N/A

Material Info

Old Part Number 2273-A(P901)

Reference - Drawing Numbers

Product Specification PS-02-09

EU RoHS

**ELV and RoHS
Compliant**
**REACH SVHC
Not Reviewed**
**Halogen-Free
Status
Not Reviewed**

China RoHS



Need more information on product environmental compliance?

Email productcompliance@molex.com
 For a multiple part number RoHS Certificate of Compliance, [click here](#)

Please visit the [Contact Us](#) section for any non-product compliance questions.

Search Parts in this Series

[2273Series](#)

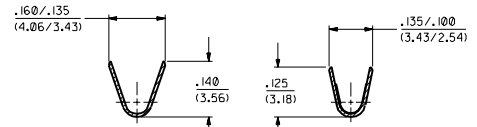
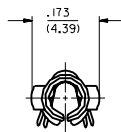
Application Tooling | FAQ

Tooling specifications and manuals are found by selecting the products below. Crimp Height Specifications are then contained in the Application Tooling Specification document.

Global

Description	Product #
Mini-Mac™ Applicator	0638927000
Insertion Tool	0011020003
Extraction Tool	0011030006
Terminator Die	0011402002

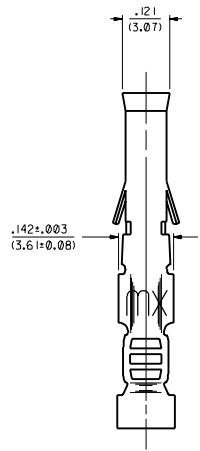
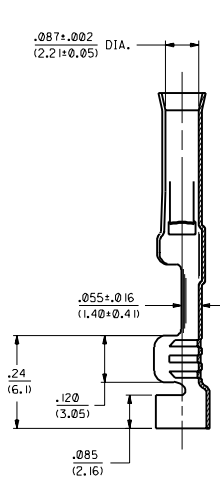
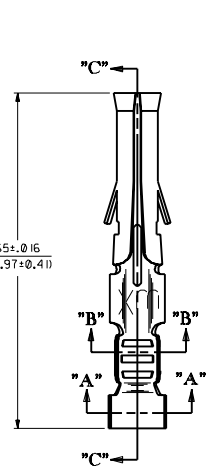
PART NO.	ENG. NO.
02-09-1122	2273-A(P90 I)
02-09-1123	2273-A(P90 IL)
-	-
-	-
-	-
-	-
-	-
-	-



SECTION "A-A"

SECTION "B-B"

LEGEND
 2273-A(****)*
 * - FORM BLANK-CHAIN L-LOOSE
 ** - FINISH CODE
 P-PREPLATE
 BLANK-POSTPLATE



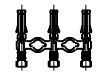
SECTION "C-C"

- NOTES:
1. TERMINAL FOR USE WITH .093/(2.36) SERIES HOUSINGS AND WILL ACCEPT 18 THRU 22 AWG WIRE.
 2. INSERTION FORCE: 2.0 LBS. AVG. WHEN TERMINAL IS INSERTED INTO AN .093 SERIES HOUSING.
 3. CONTACT RETENTION: 20 LBS. MIN.
 4. THIS PART CONFORMS TO PRODUCT SPEC. 02-09.

MATERIAL NOTES:
 1. CARTRIDGE BRASS, ALLOY *C26000
 .008/(0.20) THICK, SPRING TEMPER

FINISH CODES:
 901 HOT TIN DIP .000020/(0.0005) MIN.

CHAIN FORM
 FULL SCALE



B	REVISE PER	DATE	BY
	ECR US 0759	2/10/94	RW
A	FINAL RELEASE	4/5/91	RW
	ECR US 0755		

DIMENSIONS SHOWN METRIC UNLESS INDICATED OTHERWISE OTHERWISE INDICATED IN 1/16"		MFG. SH. REV. L.T.R.		REVISIONS	
TITLE		REVISE ONLY ON CAD SYSTEM		DATE	
CRIMP TERM, FEMALE				10/14/5/91	
.093/(2.36) DIA.					
FOR 18 THRU 22 AWG WIRE					
MOLEX INCORPORATED		DRAWING NO.		SD-2273-A	
PART NO.		SCALE		REV.	
SEE CHART		6 : 1		CP	
APP'D. GWF		SCALE		REV.	
DATE		SCALE		REV.	
5/22/91		6 : 1		CP	
MFG. INC. THE SHOWN MUST BE USED WITHOUT WRITTEN PERMISSION					