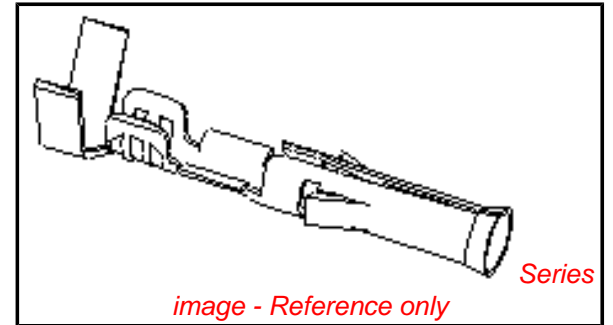


**PLEASE CHECK WWW.MOLEX.COM FOR LATEST PART INFORMATION**

**Part Number:** [0002091123](#)  
**Status:** **Active**  
**Overview:** [standard\\_093](#)  
**Description:** 2.36mm (.093") Diameter, Standard .093" Pin and Socket Crimp Terminal, Series 2273, Female, with Tin (Sn) Plated Contact, Low Engagement Force, 18-22 AWG, Bag

**Documents:**

[Drawing \(PDF\)](#) [RoHS Certificate of Compliance \(PDF\)](#)  
[Product Specification PS-02-09 \(PDF\)](#)



**General**

Product Family	Crimp Terminals
Series	<a href="#">2273</a>
Comments	Low Engagement Force
Crimp Quality Equipment	Yes
Overview	<a href="#">standard_093</a>
Product Name	Standard .093"

**Physical**

Durability (mating cycles max)	25
Gender	Female
Material - Metal	Brass
Material - Plating Mating	Tin
Material - Plating Termination	Tin
Packaging Type	Bag
Plating min: Mating (µin)	20
Plating min: Mating (µm)	0.50
Plating min: Termination (µin)	20
Plating min: Termination (µm)	0.50
Termination Interface: Style	Crimp or Compression
Wire Insulation Diameter	1.52-3.05mm (.060-.120")
Wire Size AWG	18, 20, 22
Wire Size mm²	N/A

**Material Info**

Old Part Number 2273-A(P901)L

**Reference - Drawing Numbers**

Product Specification PS-02-09

**EU RoHS**

**ELV and RoHS  
Compliant**  
**REACH SVHC  
Not Reviewed**  
**Halogen-Free  
Status  
Not Reviewed**

**China RoHS**



**Need more information on product environmental compliance?**

Email [productcompliance@molex.com](mailto:productcompliance@molex.com)  
 For a multiple part number RoHS Certificate of Compliance, [click here](#)

Please visit the [Contact Us](#) section for any non-product compliance questions.

**Search Parts in this Series**

[2273Series](#)

**Use With**

[1619](#) Plug or Receptacle Housing, [1545](#) Plug or Receptacle Housing, [1396](#) Plug or Receptacle Housing, [1490](#) Plug or Receptacle Housing, [2629](#) Plug or Receptacle Crimp Housings, [1261](#) Plug or Receptacle Housing, [1292](#) Plug or Receptacle Housing, [1360](#) Plug or Receptacle Housing, [1375](#) Plug or Receptacle Housing, [3191](#) Plug or Receptacle Housing, [2163](#) Plug or Receptacle Housings

**Application Tooling | FAQ**

*Tooling specifications and manuals are found by selecting the products below. Crimp Height Specifications are then contained in the Application Tooling Specification document.*

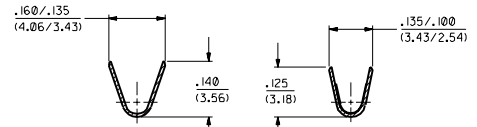
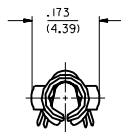
**Global**

Description	Product #
Hand Crimp Tool	<a href="#">0638191200</a>
Insertion Tool	<a href="#">0011020003</a>

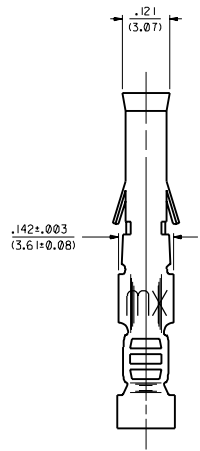
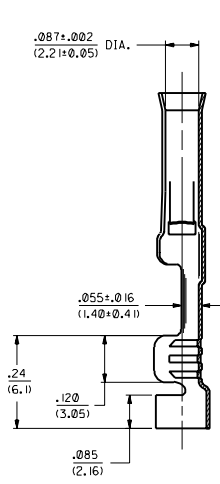
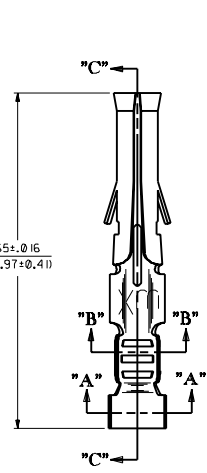
This document was generated on 05/17/2010

**PLEASE CHECK [WWW.MOLEX.COM](http://WWW.MOLEX.COM) FOR LATEST PART INFORMATION**

PART NO.	ENG. NO.
02-09-1122	2273-A(P90 I)
02-09-1123	2273-A(P90 IL)
-	-
-	-
-	-
-	-
-	-
-	-



**SECTION "A-A"**      **SECTION "B-B"**



**SECTION "C-C"**

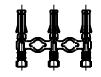
**LEGEND**  
 2273-A(\*\*\*\*)\*  
 \* - FORM BLANK-CHAIN L-LOOSE  
 \*\* - FINISH CODE  
 P-PREPLATE BLANK-POSTPLATE

- NOTES:
1. TERMINAL FOR USE WITH .093/(2.36) SERIES HOUSINGS AND WILL ACCEPT 18 THRU 22 AWG WIRE.
  2. INSERTION FORCE: 2.0 LBS. AVG. WHEN TERMINAL IS INSERTED INTO AN .093 SERIES HOUSING.
  3. CONTACT RETENTION: 20 LBS. MIN.
  4. THIS PART CONFORMS TO PRODUCT SPEC. 02-09.

MATERIAL NOTES:  
 1. CARTRIDGE BRASS, ALLOY #C26000  
 .008/(0.20) THICK, SPRING TEMPER

FINISH CODES:  
 901 HOT TIN DIP .000020/(0.0005) MIN.

CHAIN FORM  
 FULL SCALE



B	REVISE PER	DATE	BY
	ECR US 0759	2/10/94	RW
A	FINAL RELEASE	4/5/91	RW
	ECR US 0755		

DIMENSIONS SHOWN METRIC UNLESS INDICATED OTHERWISE UNLESS NOTED TO THE CONTRARY		MFG. SH. REV. L.T.R. REVISIONS	
TITLE		REVISE ONLY ON CAD SYSTEM	
CRIMP TERM, FEMALE .093/(2.36) DIA. FOR 18 THRU 22 AWG WIRE		PART NO. 2273-A	
MOLEX INCORPORATED		DRAWING NO. SD-2273-A	
SCALE 6:1		DATE 10/14/91	
DRAWN BY CWF		CHECKED BY RW	
APPROVED BY CWF		DATE 5/22/91	
SCALE 6:1		MATERIAL SPEC. SEE CHART	
SCALE 6:1		MATERIAL SPEC. SEE CHART	