

**PLEASE CHECK WWW.MOLEX.COM FOR LATEST PART INFORMATION**

**Part Number:** [0025022060](#)  
**Status:** **Active**  
**Description:** 2.54mm (.100") Pitch C-Grid® Header, Dual Row, Shrouded, with PC Slot and Guide Ear, 60 Circuits, Tn (Sn) Plating

**Documents:**

<a href="#">3D Model</a>	<a href="#">Product Specification PS-70204 (PDF)</a>
<a href="#">Packaging Specification (PDF)</a>	<a href="#">RoHS Certificate of Compliance (PDF)</a>
<a href="#">Drawing (PDF)</a>	

**Agency Certification**

CSA	LR19980
UL	E29179

**General**

Product Family	PCB Headers
Series	<a href="#">70204</a>
Application	Board-to-Board
Product Name	C-Grid®

**Physical**

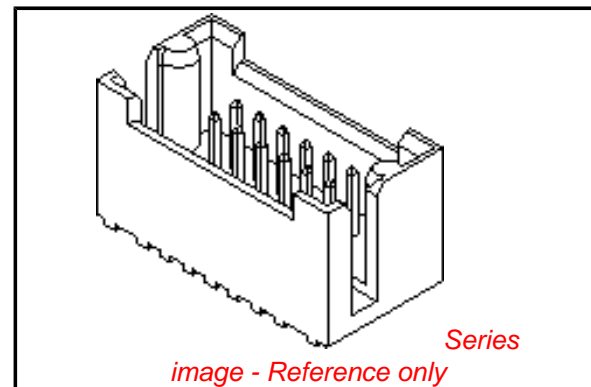
Breakaway	No
Circuits (Loaded)	60
Circuits (maximum)	60
Durability (mating cycles max)	25
Flammability	94V-0
Glow-Wire Compliant	No
Guide to Mating Part	Yes
Lock to Mating Part	None
Material - Plating Mating	Tin
Material - Plating Termination	Tin
Number of Rows	2
Orientation	Vertical
PC Tail Length (in)	0.110 In
PC Tail Length (mm)	2.79 mm
PCB Locator	No
PCB Retention	None
Packaging Type	Tray
Pitch - Mating Interface (in)	0.100 In
Pitch - Mating Interface (mm)	2.54 mm
Plating min: Mating (µin)	150
Plating min: Mating (µm)	3.80
Plating min: Termination (µin)	150
Plating min: Termination (µm)	3.80
Polarized to Mating Part	Yes
Polarized to PCB	No
Shrouded	Fully
Stackable	No
Temperature Range - Operating	-40°C to +105°C
Termination Interface: Style	Through Hole

**Electrical**

Current - Maximum per Contact	3A
Voltage - Maximum	250V

**Solder Process Data**

Lead-free Process Capability	Wave Capable (TH only)
------------------------------	------------------------



**EU RoHS**

**ELV and RoHS Compliant**  
**REACH SVHC**  
 Not Reviewed  
**Halogen-Free Status**  
 Not Reviewed

**China RoHS**



**Need more information on product environmental compliance?**

Email [productcompliance@molex.com](mailto:productcompliance@molex.com)  
 For a multiple part number RoHS Certificate of Compliance, [click here](#)

Please visit the [Contact Us](#) section for any non-product compliance questions.

**Search Parts in this Series**

[70204Series](#)

**Mates With**

[71973](#)

**Material Info**

Old Part Number

70204-0413

**Reference - Drawing Numbers**

Product Specification

PS-70204

Sales Drawing

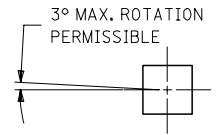
SDA-70204-0385-0448

This document was generated on 03/31/2010

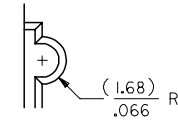
**PLEASE CHECK [WWW.MOLEX.COM](http://WWW.MOLEX.COM) FOR LATEST PART INFORMATION**

CKT. SIZE	PART NUMBER	ENG. NUMBER SDA-70204-	DIM. "A"		DIM. "B"		DIM. "C"	
			MM	IN.	MM	IN.	MM	IN.
			08	25-02-2008	0387	7,62	.300	17,78
10	25-02-2010	0388	10,16	.400	20,32	.800	22,86	.900
12	25-02-2012	0389	12,70	.500	22,86	.900	25,40	1.000
14	25-02-2014	0390	15,24	.600	25,40	1.000	32,51	1.100
16	25-02-2016	0391	17,78	.700	27,94	1.100	30,48	1.200
18	25-02-2018	0392	20,32	.800	30,48	1.200	33,02	1.300
20	25-02-2020	0393	22,86	.900	33,02	1.300	35,56	1.400
22	25-02-2022	0394	25,40	1.000	35,56	1.400	38,10	1.500
24	25-02-2024	0395	27,94	1.100	38,10	1.500	40,64	1.600
26	25-02-2026	0396	30,48	1.200	40,64	1.600	43,10	1.700
28	25-02-2028	0397	33,02	1.300	43,10	1.700	45,72	1.800
30	25-02-2030	0398	35,56	1.400	45,72	1.800	48,26	1.900
32	25-02-2032	0399	38,10	1.500	48,26	1.900	50,80	2.000
34	25-02-2034	0400	40,64	1.600	50,80	2.000	53,34	2.100
36	25-02-2036	0401	43,10	1.700	53,34	2.100	55,88	2.200
38	25-02-2038	0402	45,72	1.800	55,88	2.200	58,42	2.300
40	25-02-2040	0403	48,26	1.900	58,42	2.300	60,96	2.400

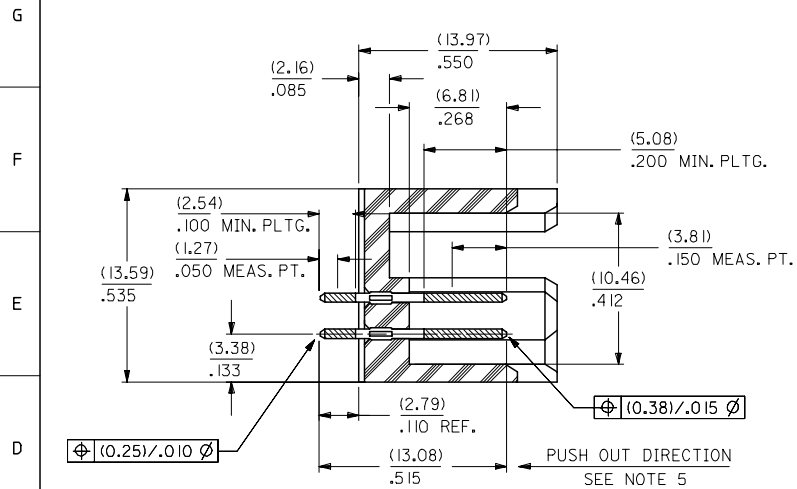
CKT. SIZE	PART NUMBER	ENG. NUMBER SDA-70204-	DIM. "A"		DIM. "B"		DIM. "C"	
			MM	IN.	MM	IN.	MM	IN.
			42	25-02-2042	0404	50,80	2.000	60,96
44	25-02-2044	0405	53,34	2.100	63,50	2.500	66,04	2.600
46	25-02-2046	0406	55,88	2.200	66,04	2.600	68,58	2.700
48	25-02-2048	0407	58,42	2.300	68,58	2.700	71,12	2.800
50	25-02-2050	0408	60,96	2.400	71,12	2.800	73,66	2.900
52	25-02-2052	0409	63,50	2.500	73,66	2.900	76,20	3.000
54	25-02-2054	0410	66,04	2.600	76,20	3.000	78,74	3.100
56	25-02-2056	0411	68,58	2.700	78,74	3.100	81,28	3.200
58	25-02-2058	0412	71,12	2.800	81,28	3.200	83,82	3.300
60	25-02-2060	0413	73,66	2.900	83,82	3.300	86,36	3.400
62	25-02-2062	0414	76,20	3.000	86,36	3.400	88,90	3.500
64	25-02-2064	0415	78,74	3.100	88,90	3.500	91,44	3.600
66	25-02-2066	0416	81,28	3.200	91,44	3.600	93,98	3.700
68	25-02-2068	0417	83,82	3.300	93,98	3.700	96,52	3.800
70	25-02-2070	0418	86,36	3.400	96,52	3.800	99,06	3.900
72	25-02-2072	0419	88,90	3.500	99,06	3.900	101,60	4.000



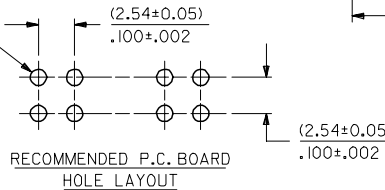
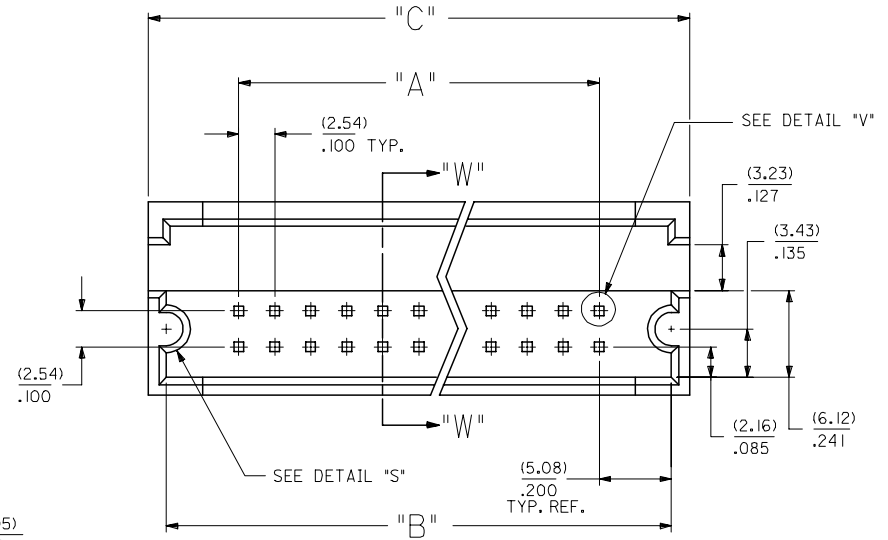
DETAIL "V"  
SCALE = 20:1



DETAIL "S"



SECTION W-W



**NOTES:**

- 1) WAFER MATERIAL: GLASS FILLED NYLON COLOR, BLACK.
- 2) PIN MATERIAL: PHOSPHOR BRONZE ALLOY
- 3) PIN PLATING: (OVERALL)  
.000150 MINIMUM TIN PLATE  
OVER .000050 MINIMUM NICKEL PLATE
- THE PRIMARY SHIPPING CARTON WILL BE LABELED "COMPLIANT TO RoHS DIRECTIVE 2002/95/EC AND ELV ANNEX II OF DIRECTIVE 2000/53/EC". CARTONS WITHOUT THIS LABEL MAY CONTAIN PRODUCT WITH LEAD.
- 4) PINS MUST MEET SOLDERABILITY SPEC. NO. 152.
- 5) PIN PUSH-OUT FORCE (1.81 KG.)/4 LBS MIN.
- 6) REFER TO P.S. NO. 70204.
- 7) STANDARD PACKAGING PER: PK-70873-0070.

REMOVE 0420-0448 EC NO: UCP2007-0113 DRW:ANDJORGAN 2006/08/07 CHK:DMS/BARRA 2006/08/16 APPR:SMILLER 2006/08/18 DESCRIPTION	QUALITY SYMBOLS	GENERAL TOLERANCES (UNLESS SPECIFIED)	DIMENSION STYLE	SCALE	DESIGN UNITS	THIRD ANGLE PROJECTION																						
	$\nabla=0$ $\nabla=0$	<table border="1"> <tr><th colspan="2">mm</th><th colspan="2">INCH</th></tr> <tr><td>4 PLACES</td><td>± ---</td><td>± ---</td><td>± ---</td></tr> <tr><td>3 PLACES</td><td>± ---</td><td>± .010</td><td>± ---</td></tr> <tr><td>2 PLACES</td><td>± 0.25</td><td>± ---</td><td>± ---</td></tr> <tr><td>1 PLACE</td><td>± ---</td><td>± ---</td><td>± ---</td></tr> </table>	mm		INCH		4 PLACES	± ---	± ---	± ---	3 PLACES	± ---	± .010	± ---	2 PLACES	± 0.25	± ---	± ---	1 PLACE	± ---	± ---	± ---	MM/IN	4:1	INCH			
	mm		INCH																									
	4 PLACES	± ---	± ---	± ---																								
3 PLACES	± ---	± .010	± ---																									
2 PLACES	± 0.25	± ---	± ---																									
1 PLACE	± ---	± ---	± ---																									
	<table border="1"> <tr><td colspan="2">DRAWN BY</td><td colspan="2">DATE</td></tr> <tr><td>JAS</td><td></td><td>1986/05/20</td><td></td></tr> <tr><td colspan="2">CHECKED BY</td><td colspan="2">DATE</td></tr> <tr><td>EIK</td><td></td><td>1986/05/20</td><td></td></tr> <tr><td colspan="2">APPROVED BY</td><td colspan="2">DATE</td></tr> <tr><td>WAZ</td><td></td><td>1986/05/20</td><td></td></tr> </table>	DRAWN BY		DATE		JAS		1986/05/20		CHECKED BY		DATE		EIK		1986/05/20		APPROVED BY		DATE		WAZ		1986/05/20		TITLE	SHROUDED HEADER DUAL ROW W/PCB SLOTS & GUIDE EARS .100 GRID, .025 SQ PIN	
DRAWN BY		DATE																										
JAS		1986/05/20																										
CHECKED BY		DATE																										
EIK		1986/05/20																										
APPROVED BY		DATE																										
WAZ		1986/05/20																										
	DRAFT WHERE APPLICABLE MUST REMAIN WITHIN DIMENSIONS	SEE TABLE	MATERIAL NO.	DOCUMENT NO.	SHEET NO.																							

MOLEX INCORPORATED  
SDA-70204-0385-0448  
1 OF 1