

**PLEASE CHECK WWW.MOLEX.COM FOR LATEST PART INFORMATION**

**Part Number:** [0190340007](#)  
**Status:** **Active**  
**Description:** InsulKrimp™ Snap Plug, for 14-16 AWG Wire, 24.13mm (.950") Length

**Documents:**

[Drawing \(PDF\)](#) [RoHS Certificate of Compliance \(PDF\)](#)

**Agency Certification**

CSA LR18689  
 UL E152602

**General**

Product Family Quick Disconnects  
 Series [19034](#)  
 Crimp Quality Equipment Yes  
 Product Name InsulKrimp™  
 Type Snap Plug

**Physical**

Barrel Type Closed  
 Color - Resin Natural  
 Flammability 94V-0  
 Gender Male  
 Glow-Wire Compliant No  
 Insulation PVC  
 Lock to Mating Part None  
 Material - Metal Copper  
 Material - Resin PVC  
 Orientation Straight  
 Packaging Type Bag  
 Tab Thickness N/A  
 Tab Width N/A  
 Wire Insulation Diameter 4.40mm (.175") max.  
 Wire Size AWG 14, 16  
 Wire Size mm² 1.30 - 2.00

**Electrical**

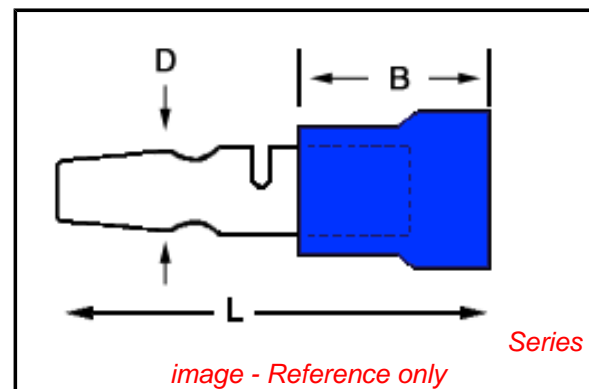
Voltage - Maximum 600V

**Material Info**

Old Part Number B-279X

**Reference - Drawing Numbers**

Sales Drawing SD-19034-004



**EU RoHS**

**ELV and RoHS Compliant**

**REACH SVHC**

Not Reviewed

**Halogen-Free**

**Status**

**Not Reviewed**

**China RoHS**



**Need more information on product environmental compliance?**

Email [productcompliance@molex.com](mailto:productcompliance@molex.com)  
 For a multiple part number RoHS Certificate of Compliance, [click here](#)

Please visit the [Contact Us](#) section for any non-product compliance questions.

**Search Parts in this Series**

[19034Series](#)

**Application Tooling | [FAQ](#)**

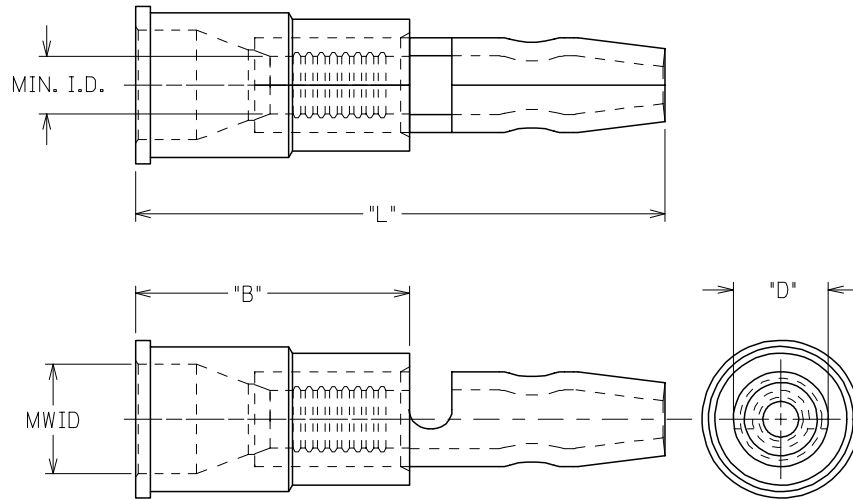
*Tooling specifications and manuals are found by selecting the products below. Crimp Height Specifications are then contained in the Application Tooling Specification document.*

**Global**

Description	Product #
Hand Crimp Tool	<a href="#">0640010100</a>
Hand Crimp Tool	<a href="#">0640010300</a>
Hand Crimp Tool	<a href="#">0640011400</a>
Crimp Head for the AT-200™ Pneumatic Hand Tool	<a href="#">0640050100</a>
Crimp Head for the AT-200™ Pneumatic Hand Tool	<a href="#">0640050300</a>
Crimp Head for the AT-200™ Pneumatic Hand Tool	<a href="#">0640051400</a>

This document was generated on 04/12/2010

**PLEASE CHECK [WWW.MOLEX.COM](http://WWW.MOLEX.COM) FOR LATEST PART INFORMATION**



MATERIAL: COPPER  
 .031" NOM. THICKNESS  
 FINISH: ELECTRO-TIN PLATING

MWID= MAX. WIRE INSULATION DIA.  
 PART NUMBERS ARE FOR LOOSE PIECE TO ORDER PARTS ON TAPE ADD A "T" TO END OF PART NUMBER

MATERIAL NO.	ENGR NO.	WIRE RANGE AWG	DIAMETER "D"	MAX. "L"	±.01 "B"	MWID	MIN. I.D.			INSULATION
190340002	A-259X	22-18	.180	.950	.450	.145	.056			PVC
190340005	A-269X	22-18	.156	.890	.450	.145	.056			PVC
190340007	B-279X	16-14	.180	.950	.450	.175	.084			PVC
190340009	B-289X	16-14	.156	.890	.450	.175	.084			PVC

REMOVED TAPE PARTS

EC NO:	2005/04/27
DRWN:LSHADECK	2005/05/04
CHKDR:DEROSS	2005/05/04
APPR:RDEROSS	2005/05/04
REV	DESCRIPTION
A	

QUALITY SYMBOLS	▽=0
	▽=0

GENERAL TOLERANCES (UNLESS SPECIFIED)	mm	INCH
	4 PLACES	± --- ± ---
	3 PLACES	± --- ± ---
	2 PLACES	± --- ± ---
	1 PLACE	± --- ± ---
ANGULAR		± ---°
DRAFT WHERE APPLICABLE MUST REMAIN WITHIN DIMENSIONS		

DIMENSION STYLE		SCALE	DESIGN UNITS	THIRD ANGLE PROJECTION
IN/MM		5:1	INCH	
DRAWN BY	DATE	TITLE		
EMF	07/30/93	INSULKRIMP MALE BULLET SNAP PLUG		
CHECKED BY	DATE	MATERIAL NO.		
JM	07/30/93	SEE TABLE		
APPROVED BY	DATE	DOCUMENT NO.		
FP	07/30/93	SD-19034-004		
SHEET NO.		THIS DRAWING CONTAINS INFORMATION THAT IS PROPRIETARY TO MOLEX INCORPORATED AND SHOULD NOT BE USED WITHOUT WRITTEN PERMISSION		
1 OF 1				

MATERIAL NO.		DOCUMENT NO.	SHEET NO.
SEE TABLE		SD-19034-004	1 OF 1
THIS DRAWING CONTAINS INFORMATION THAT IS PROPRIETARY TO MOLEX INCORPORATED AND SHOULD NOT BE USED WITHOUT WRITTEN PERMISSION			