

PLEASE CHECK WWW.MOLEX.COM FOR LATEST PART INFORMATION

Part Number: **0190340009**
Status: **Active**
Description: InsulKrimp™ Snap Plug, for 14-16 AWG Wire, 22.61mm (.890") Length

Documents:

[Drawing \(PDF\)](#) [RoHS Certificate of Compliance \(PDF\)](#)

Agency Certification

CSA LR18689
 UL E152602

General

Product Family Quick Disconnects
 Series 19034
 Crimp Quality Equipment Yes
 MolexKits Yes
 Product Name InsulKrimp™
 Type Snap Plug

Physical

Barrel Type Closed
 Color - Resin Natural
 Flammability 94V-0
 Gender Male
 Glow-Wire Compliant No
 Insulation PVC
 Lock to Mating Part None
 Material - Metal Copper
 Material - Resin PVC
 Orientation Straight
 Packaging Type Bag
 Tab Thickness N/A
 Tab Width N/A
 Wire Insulation Diameter 4.40mm (.175") max.
 Wire Size AWG 14, 16
 Wire Size mm² 1.30 - 2.00

Electrical

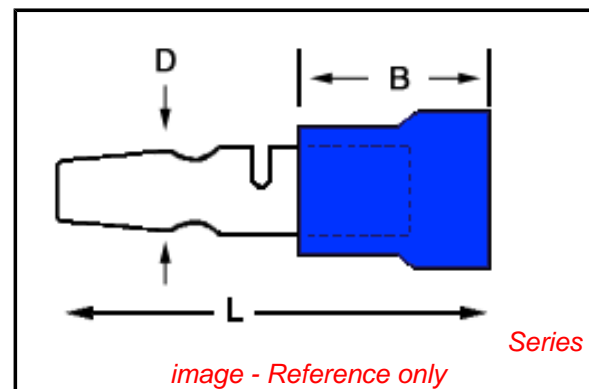
Voltage - Maximum 600V

Material Info

Old Part Number B-289X

Reference - Drawing Numbers

Sales Drawing SD-19034-004



EU RoHS

ELV and RoHS Compliant
REACH SVHC
 Not Reviewed
Halogen-Free Status
 Not Reviewed

China RoHS



Need more information on product environmental compliance?

Email productcompliance@molex.com
 For a multiple part number RoHS Certificate of Compliance, [click here](#)

Please visit the [Contact Us](#) section for any non-product compliance questions.

Search Parts in this Series

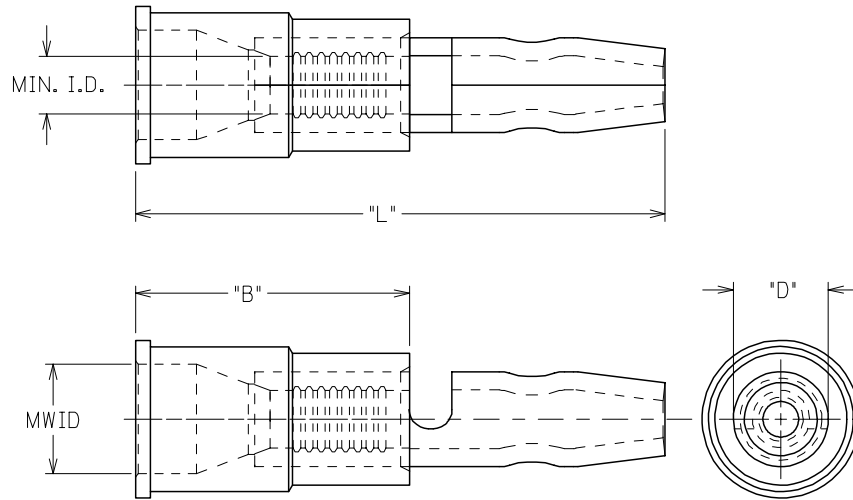
[19034Series](#)

Application Tooling | FAQ

Tooling specifications and manuals are found by selecting the products below. Crimp Height Specifications are then contained in the Application Tooling Specification document.

Global

Description	Product #
Hand Crimp Tool	0640010100
Hand Crimp Tool	0640011400
Crimp Head for the AT-200™ Pneumatic Hand Tool	0640050100
Crimp Head for the AT-200™ Pneumatic Hand Tool	0640051400



MATERIAL: COPPER
 .031" NOM. THICKNESS
 FINISH: ELECTRO-TIN PLATING

MWID= MAX. WIRE INSULATION DIA.
 PART NUMBERS ARE FOR LOOSE PIECE TO ORDER PARTS ON TAPE ADD A "T" TO END OF PART NUMBER

MATERIAL NO.	ENGR NO.	WIRE RANGE AWG	DIAMETER "D"	MAX. "L"	±.01 "B"	MWID	MIN. I.D.			INSULATION
190340002	A-259X	22-18	.180	.950	.450	.145	.056			PVC
190340005	A-269X	22-18	.156	.890	.450	.145	.056			PVC
190340007	B-279X	16-14	.180	.950	.450	.175	.084			PVC
190340009	B-289X	16-14	.156	.890	.450	.175	.084			PVC

REMOVED TAPE PARTS

EC NO:	2005/04/27
DRWN:LSHADECK	2005/05/04
CHKDR:DEROSS	2005/05/04
APPR:RDEROSS	2005/05/04
REV	DESCRIPTION
A	

QUALITY SYMBOLS	▽=0
	▽=0

GENERAL TOLERANCES (UNLESS SPECIFIED)	mm	INCH
	4 PLACES	± --- ± ---
	3 PLACES	± --- ± ---
	2 PLACES	± --- ± ---
	1 PLACE	± --- ± ---
ANGULAR		± ---°
DRAFT WHERE APPLICABLE MUST REMAIN WITHIN DIMENSIONS		

DIMENSION STYLE		SCALE	DESIGN UNITS	THIRD ANGLE PROJECTION
IN/MM		5:1	INCH	
DRAWN BY	DATE	TITLE		
EMF	07/30/93	INSULKRIMP MALE BULLET SNAP PLUG		
CHECKED BY	DATE	MATERIAL NO.		
JM	07/30/93	SEE TABLE		
APPROVED BY	DATE	DOCUMENT NO.		
FP	07/30/93	SD-19034-004		
SHEET NO.		THIS DRAWING CONTAINS INFORMATION THAT IS PROPRIETARY TO MOLEX INCORPORATED AND SHOULD NOT BE USED WITHOUT WRITTEN PERMISSION		
1 OF 1				

MATERIAL NO.		DOCUMENT NO.	SHEET NO.
SEE TABLE		SD-19034-004	1 OF 1
THIS DRAWING CONTAINS INFORMATION THAT IS PROPRIETARY TO MOLEX INCORPORATED AND SHOULD NOT BE USED WITHOUT WRITTEN PERMISSION			