

PLEASE CHECK WWW.MOLEX.COM FOR LATEST PART INFORMATION

Part Number: [0354076802](#)
Status: **Active**
Description: 2.28mm (.090") Sealed Terminal, Female, 0.85-1.25mm² (.033-.050") AVSS, 0.25mm (.010") Material Thickness, Pre-Tin Plated, Reel

Documents:

[Drawing \(PDF\)](#) [RoHS Certificate of Compliance \(PDF\)](#)
[Product Specification PS-35519-001 \(PDF\)](#)

General

| | |
|-------------------------|-----------------------|
| Product Family | Crimp Terminals |
| Series | 35407 |
| Crimp Quality Equipment | Yes |
| Product Name | N/A |

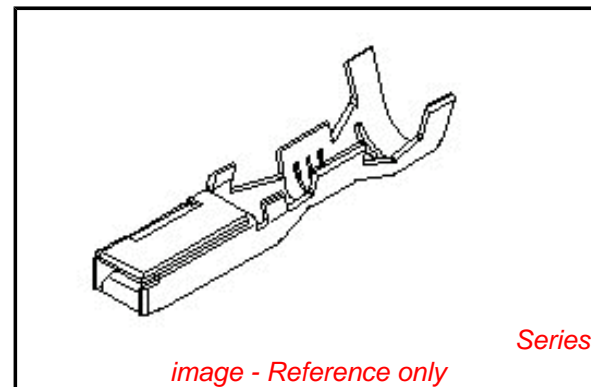
Physical

| | |
|--------------------------------|------------------------------|
| Gender | Female |
| Material - Metal | High Performance Alloy (HPA) |
| Material - Plating Mating | Tin |
| Material - Plating Termination | Tin |
| Packaging Type | Reel |
| Plating min: Mating (µin) | 32.00 |
| Plating min: Mating (µm) | 0.800 |
| Plating min: Termination (µin) | 32.00 |
| Plating min: Termination (µm) | 0.80 |
| Termination Interface: Style | Crimp or Compression |
| Wire Insulation Diameter | 1.90mm (.075") max. |
| Wire Size AWG | 16, 18 |
| Wire Size mm ² | N/A |

Material Info

Reference - Drawing Numbers

| | |
|-----------------------|--------------|
| Product Specification | PS-35519-001 |
| Sales Drawing | SD-35407-001 |



EU RoHS

**ELV and RoHS
Compliant**
**REACH SVHC
Contains SVHC: No**
**Halogen-Free
Status**

China RoHS



**Need more information on product
environmental compliance?**

Email productcompliance@molex.com
 For a multiple part number RoHS Certificate of Compliance, [click here](#)

Please visit the [Contact Us](#) section for any non-product compliance questions.

Search Parts in this Series

[35407Series](#)

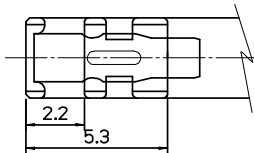
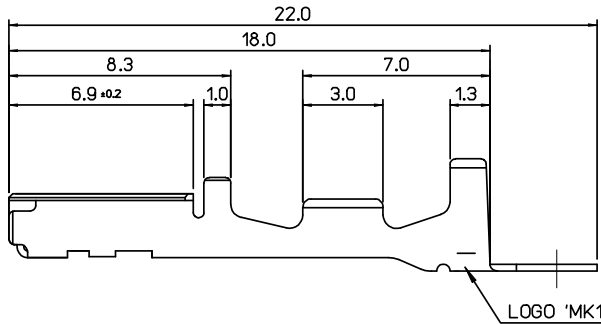
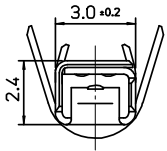
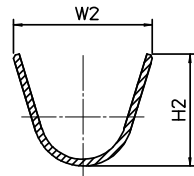
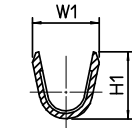
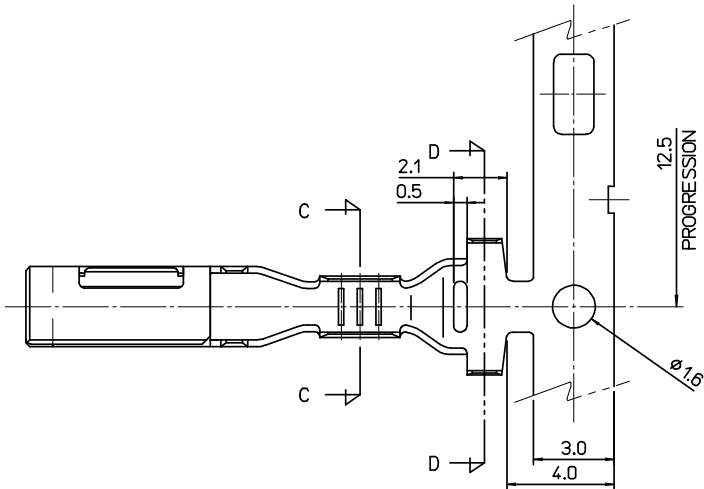
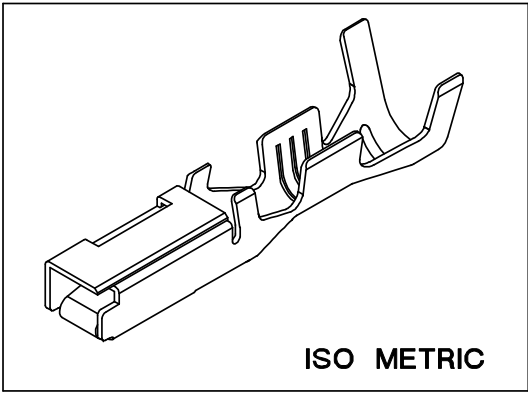
Mates With

[35420](#)

Use With

[35825](#)

PLEASE CHECK WWW.MOLEX.COM FOR LATEST PART INFORMATION



NOTES

1. MATERIAL: COPPER ALLOY, $t=0.25\text{mm}$
2. FINISH: PRE-TIN PLATED
3. RECOMMENDED LENGTH OF WIRE STRIP: 5.0-5.6

| NO. | ENG. NO. | TYPE | DESCRIPTION | CABLE SIZE(mm ²) AVS. AVSS | DIMENSION | | | |
|-----|------------|------|--------------------------|---|-----------|-----|-----|-----|
| | | | | | W1 | H1 | W2 | H2 |
| 1 | 35407-6702 | S | .090 SEALED FEMALE TER'L | 0.3 - 0.5 | 2.5 | 2.2 | 5.1 | 4.2 |
| 2 | 35407-6802 | M | .090 SEALED FEMALE TER'L | 0.85-1.25 | 2.6 | 3.0 | 5.2 | 4.7 |
| 3 | 35407-6902 | L | .090 SEALED FEMALE TER'L | 2.0 | 4.0 | 3.5 | 5.2 | 4.7 |

CHANGED OF ISOMETRIC
 EC NO: KOR2008-0108
 DRWNEOKIM 2007/12/28
 CHKD:BCYOON 2008/01/02
 APPR: YUNSIKKIM 2008/01/02

QUALITY SYMBOLS

▽=0

▽=0

GENERAL TOLERANCES (UNLESS SPECIFIED)

| | mm | INCH |
|----------|--------|-------|
| 4 PLACES | ± --- | ± --- |
| 3 PLACES | ± --- | ± --- |
| 2 PLACES | ± --- | ± --- |
| 1 PLACE | ± 0.25 | ± --- |

ANGULAR ± 1 °

DRAFT WHERE APPLICABLE
 MUST REMAIN
 WITHIN DIMENSIONS

DIMENSION STYLE
 MM ONLY

| DRAWN BY | DATE |
|-------------|------------|
| BCYOON | 1998/04/10 |
| CHECKED BY | DATE |
| BKCHOI | 1998/04/10 |
| APPROVED BY | DATE |
| CWLEE | 1998/04/10 |

MATERIAL NO.

SEE TABLE

SIZE
 A3

SCALE
 5:1

DESIGN UNITS
 METRIC

THIRD ANGLE PROJECTION

TITLE
 .090 SEALED FEMALE TER'L

MOLEX INCORPORATED

DOCUMENT NO.
 SD-35407-001

SHEET NO.
 1 OF 1