

PLEASE CHECK WWW.MOLEX.COM FOR LATEST PART INFORMATION

Part Number: [0512392001](#)
Status: **Active**
Description: CRC™ Shielded Rectangular I/O Plug Housing, For Plug Assembly, Female Terminal, Signal, 20 Circuits, Polarization Type Standard

Documents:

[Drawing \(PDF\)](#) [Product Specification PS-51238-018 \(PDF\)](#)
[Product Specification PS-51238-010 \(PDF\)](#) [RoHS Certificate of Compliance \(PDF\)](#)

Agency Certification

| | |
|-----|-----------|
| CSA | LR19980 |
| TUV | R72081037 |
| UL | E29179 |

General

| | |
|----------------|-----------------------|
| Product Family | I/O Connectors |
| Series | 51239 |
| Application | N/A |
| Component Type | Housing |
| Product Name | CRC™ |
| Type | N/A |

Physical

| | |
|--------------------------------|-----------------|
| Boot Color | N/A |
| Breakaway | No |
| Circuits (Loaded) | N/A |
| Circuits (maximum) | 20 |
| Color - Resin | Black |
| Flammability | 94V-0 |
| Gender | Plug |
| Keying to Mating Part | Yes |
| Lock to Mating Part | Yes |
| Material - Plating Mating | n/a |
| Material - Resin | Polyester |
| Number of Rows | 5 |
| Orientation | Vertical |
| PCB Locator | No |
| Packaging Type | Tray |
| Panel Mount | N/A |
| Pitch - Mating Interface (in) | 0.118 In |
| Pitch - Mating Interface (mm) | 3.00 mm |
| Pitch - Term. Interface (in) | 0.118 In |
| Pitch - Term. Interface (mm) | 3.00 mm |
| Polarized to Mating Part | Yes |
| Polarized to PCB | N/A |
| Ports | 1 |
| Surface Mount Compatible (SMC) | No |
| Temperature Range - Operating | -40°C to +105°C |
| Termination Interface: Style | N/A |
| Waterproof / Dustproof | No |

Electrical

| | |
|-------------------------------|------------------|
| Current - Maximum per Contact | N/A |
| Shielded | No |
| Voltage - Maximum | 250V AC (RMS)/DC |

Material Info



EU RoHS

ELV and RoHS Compliant
REACH SVHC Contains SVHC: No
Halogen-Free Status
Not Reviewed

China RoHS



Need more information on product environmental compliance?

Email productcompliance@molex.com
 For a multiple part number RoHS Certificate of Compliance, [click here](#)

Please visit the [Contact Us](#) section for any non-product compliance questions.

Search Parts in this Series

[51239Series](#)

Mates With

[51233](#)

Use With

[56380](#) plug shell body, [56120](#) and [56121](#) female terminal, [56381](#) plug shell cover

Reference - Drawing Numbers

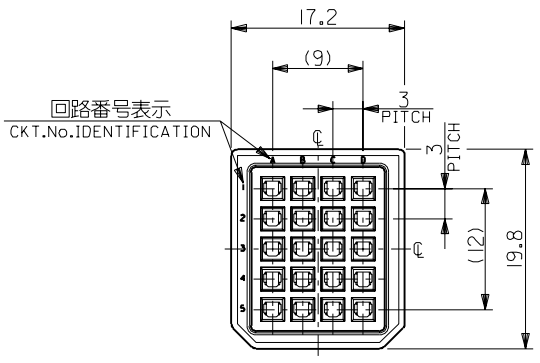
Product Specification
Sales Drawing

PS-51238-010, PS-51238-018, RPS-51238-001
SD-51239-005

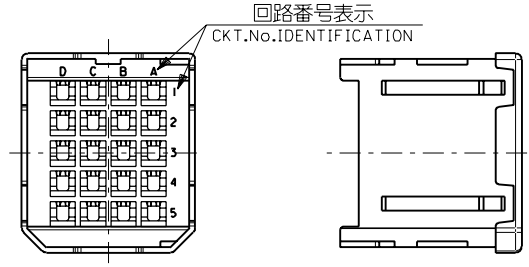
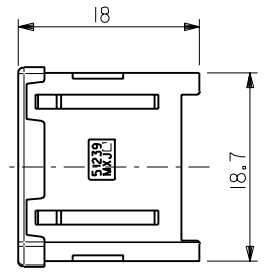
This document was generated on 04/06/2010

PLEASE CHECK WWW.MOLEX.COM FOR LATEST PART INFORMATION

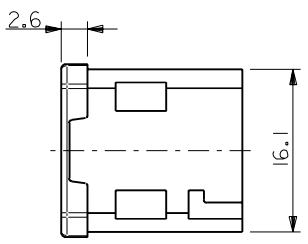
DWG. NO. SD-51239-005



嵌合側
MATING SIDE



電線挿入側
WIRE SIDE



注記
NOTES

1. 材質
MATERIAL
ガラス入りPBT樹脂 UL94V-0 色:黒
HOUSING : PBT G.F. UL94V-0 COLOR : BLACK
2. 適用端子 : 56120-8*90 , 56121-8*90
APPLICABLE CRIMP PIN : 56120-8*90 , 56121-8*90
3. 適用シエルボディ : 56380-2000
APPLICABLE SHELL BODY : 56380-2000
4. 適用シエルカバー : 56381-2000
APPLICABLE SHELL COVER : 56381-2000
5. 嵌合相手 : 51233-201*
MEET WITH : 51233-201*

<誤嵌合防止キー(極性)タイプ> <POLARITY KEY TYPE>

| 51234-2001 | 51234-2002 | 51234-2003 | 51239-2004 | 51239-2005 |
|---------------|------------|------------|------------|------------|
| | | | | |
| STANDARD TYPE | A TYPE | B TYPE | C TYPE | D TYPE |

| | | | | |
|---------------------------------|---------------|--------------|------------|---------|
| C-4 | D | 51239-2005 | 51239-**0* | 20 |
| C-3 | C | 51239-2004 | | |
| B-3 | B | 51239-2003 | | |
| B-2 | A | 51239-2002 | | |
| — | STANDARD | 51239-2001 | | |
| POLARITY POSITION (CIRCUIT No.) | POLARITY TYPE | MATERIAL No. | MODEL No. | CIRCUIT |

DO NOT SCALE DRAWING

| | | |
|----------------------------------|----------------------------------|----------------------------------|
| EC NO. DRWN: CHK: APPR: | EC NO. DRWN: CHK: APPR: | EC NO. DRWN: CHK: APPR: |
|----------------------------------|----------------------------------|----------------------------------|

REVISED 01/10/04
EC NO. J2002-0786
DRWN: S.AKIYAMA
CHK: J.MIYAZAWA
APPR: Y.O.ITO

RELEASED 01/02/09
EC NO. JD2001-1040
DRWN: S.AKIYAMA
CHK: J.MIYAZAWA
APPR: H.IKESUGI

| DESCRIPTION | MATERIAL 材料 |
|-------------------|-------------|
| FINISH 仕上げ | — |
| WIRE RANGE 適用電線範囲 | — |
| INS. RANGE 被覆外径 | — |

| GENERAL TOLERANCES: (UNLESS SPECIFIED) 一般公差 | SCALE 2-1 | DESIGN UNITS mm INCH | THIRD ANGLE PROJECTION |
|---|-----------|--|--|
| 10 UNDER 未満 | ±0.2 | <input checked="" type="checkbox"/> mm <input type="checkbox"/> INCH | <input checked="" type="checkbox"/> THIRD ANGLE PROJECTION |
| 10 OVER 以上 30 UNDER 未満 | ±0.25 | | |
| 30 OVER 以上 | ±0.3 | | |
| ANGLE 角度 | ±3° | | |

TITLE: COMPACT ROBOT CONN. (CRC) PLUG SOCKET HS'G

MATERIAL NO. SEE CHART

DRAWN BY & DATE: S. Akiyama 1/01/25

CHECKED BY & DATE: J. Miyazawa / Y. Ito

APPROVED BY & DATE: [Signature]

CAD FILE NAME: 51239005.S01

| DIMENSIONS: | SHT | REV |
|---|-----|--------------------|
| <input type="checkbox"/> mm <input type="checkbox"/> INCH | | |
| <input checked="" type="checkbox"/> mm ONLY | | |
| | | REVISE ON CAD ONLY |

THIS DRAWING CONTAINS INFORMATION THAT IS PROPRIETARY TO MOLEX INCORPORATED AND SHOULD NOT BE USED WITHOUT WRITTEN PERMISSION.

SHEET NO. 1 OF 1