

**PLEASE CHECK WWW.MOLEX.COM FOR LATEST PART INFORMATION**

**Part Number:** [0850540000](#)  
**Status:** **Active**  
**Overview:** [din\\_41612](#)  
**Description:** 2.54mm (.100") Pitch DIN 41612 Receptacle, Style R Reverse 4-Row, 128 Circuits

**Documents:**

[3D Model](#) [RoHS Certificate of Compliance \(PDF\)](#)  
[Drawing \(PDF\)](#)

**Agency Certification**

CSA LR19980  
 UL E29179

**General**

Product Family Backplane Connectors  
 Series [85054](#)  
 Application Backplane  
 Component Type PCB Receptacle  
 Overview [din\\_41612](#)  
 Product Name IEC 603-2/DIN 41612  
 Style R+

**Physical**

Circuits (Loaded) 128  
 Circuits (maximum) 128  
 Durability (mating cycles max) 500  
 First Mate / Last Break No  
 Flammability 94V-0  
 Guide to Mating Part No  
 Keying to Mating Part Yes  
 Number of Columns 32  
 Number of Pairs Open Pin Field  
 Number of Rows 4  
 Orientation Right Angle  
 PC Tail Length (in) 0.110 In  
 PC Tail Length (mm) 2.80 mm  
 PCB Locator No  
 PCB Retention Yes  
 PCB Thickness Recommended (in) 0.063 In, 0.126 In  
 PCB Thickness Recommended (mm) 1.62 mm, 3.20 mm  
 Packaging Type Bag  
 Pitch - Mating Interface (in) 0.100 In  
 Pitch - Mating Interface (mm) 2.54 mm  
 Pitch - Term. Interface (in) 0.100 In  
 Pitch - Term. Interface (mm) 2.54 mm  
 Polarized to PCB No  
 Stackable No  
 Surface Mount Compatible (SMC) No  
 Temperature Range - Operating -55°C to +125°C  
 Termination Interface: Style Through Hole

**Electrical**

Current - Maximum per Contact 1.5A  
 Data Rate 622.0 Mbps  
 Real Signals (per 25mm) 39  
 Shielded No

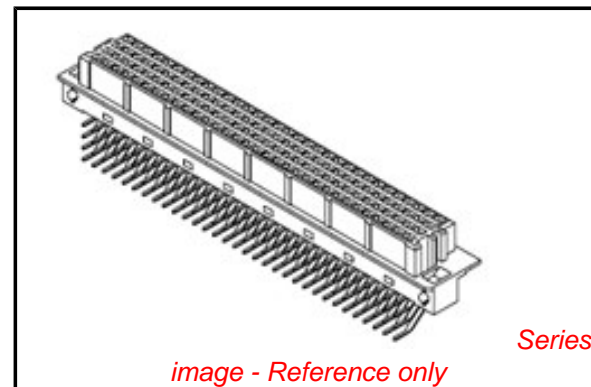


image - Reference only

Series

**EU RoHS**

**ELV and RoHS Compliant**  
**REACH SVHC**  
 Not Reviewed  
**Halogen-Free Status**  
 Not Reviewed

**China RoHS**



**Need more information on product environmental compliance?**

Email [productcompliance@molex.com](mailto:productcompliance@molex.com)  
 For a multiple part number RoHS Certificate of Compliance, [click here](#)

Please visit the [Contact Us](#) section for any non-product compliance questions.

**Search Parts in this Series**

[85054Series](#)

**Mates With**

DIN 41612 Header [85015](#)

Voltage - Maximum

250V AC (RMS)

**Material Info**

**Reference - Drawing Numbers**

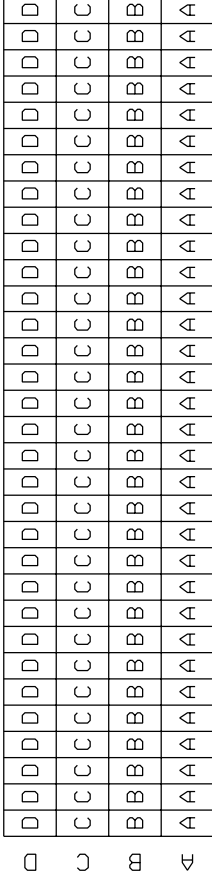
Sales Drawing

SDA-85054-0000, SDA-85054-0001

This document was generated on 05/17/2010

**PLEASE CHECK [WWW.MOLEX.COM](http://WWW.MOLEX.COM) FOR LATEST PART INFORMATION**

VIEW ON MATING SIDE



- A = 32 CONTACTS L-2,8
  - B = 32 CONTACTS L-2,8
  - C = 32 CONTACTS L-2,8
  - D = 32 CONTACTS L-2,8
- S = 128 TOTAL NUMBER OF CONTACTS

Marking	Standard
Performance level	G2/0 = Contact area level2 / Termination tin
Flux proof	no
Fixing clip	no
Dimensions	SDA-85054-0001 sht.1
Technical Data	PS-85052-0001

D	G2/0	d1-32
C	G2/0	c1-32
B	G2/0	b1-32
A	G2/0	a1-32
Contact symbol	Perform. level	Contact position number

ECN 2264  
Produkt spec.  
96-10-21 KN

REVISIONS

FOR PREVIOUS REVISIONS SEE MRI LIST

LTR

Δ-1

CAD/CAM PROJECT NAME	S8505400	SHEET NO.	1 OF 1	DATE	96/07/09
THIS DRAWING CONTAINS PROPRIETARY TO MOLEX INC. & SHOULD NOT BE USED WITHOUT WRITTEN PERMISSION		REVISE ONLY ON CAD SYSTEM		SH. REV.	
TITLE			SIZE		
128 pos. female connector acc. DIN 41612 style R contacts arrangement			SDA-85054-0000		
PART NO.		DWG NO.		DATE	
MOLEX EUROPE		85054-0000		96/07/09	

DRWG BY: KN  
CHK'D BY: Ca  
APP'D BY:  
SCALE

SIGN: KN, Ca  
SIGN: [blank]  
SIGN: [blank]

SIGN: [blank]

SIGN: [blank]

UNLESS OTHERWISE SPECIFIED TOLERANCES: ANGULAR ±2°

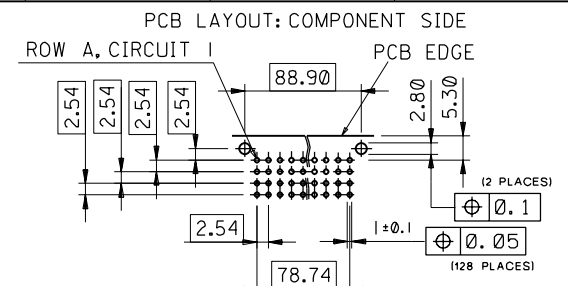
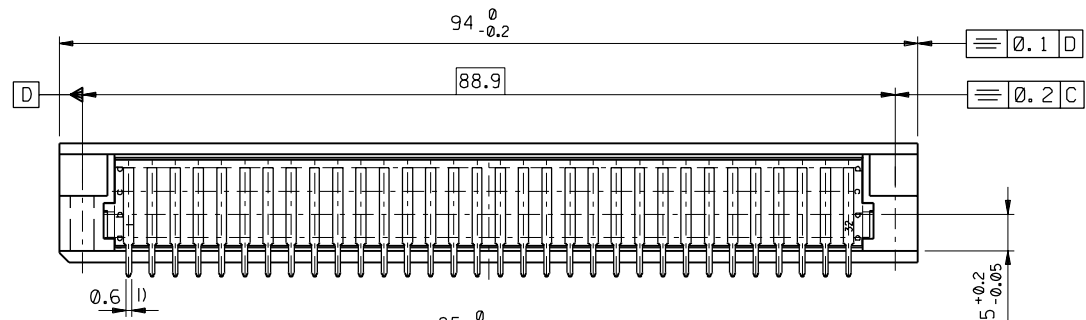
INCH METRIC  
3 PLACE ± . ±  
2 PLACE ± . ±  
1 PLACE ± . ±

DESIGN DIMENSION:  MM  IN.  
EQUIVALENT DIMENSION:  MM  IN.

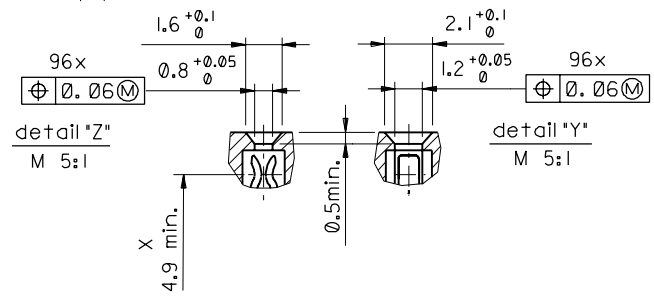
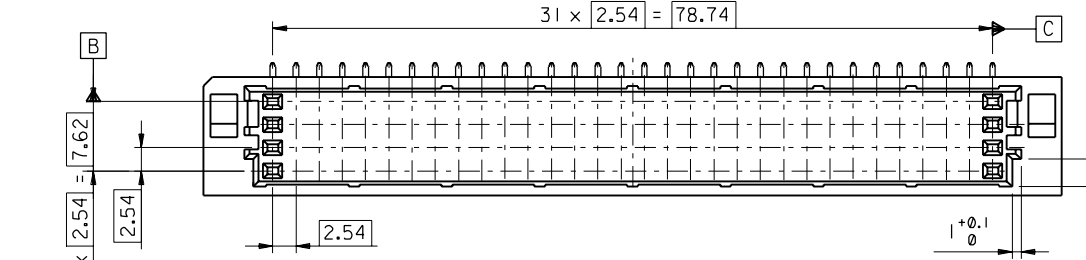
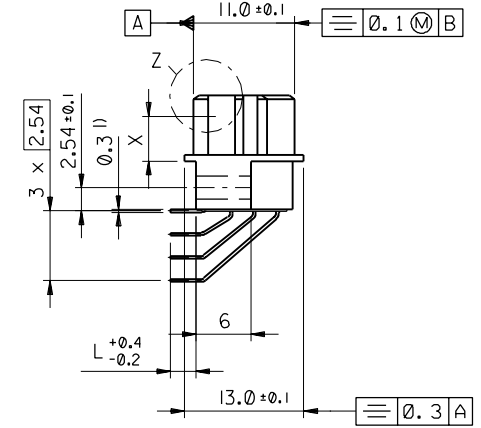
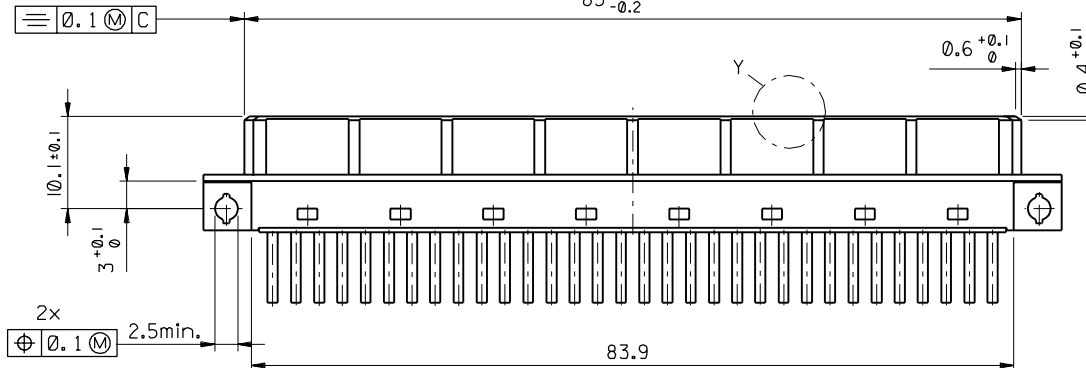
IF TWO DIMENSIONS ARE SHOWN, THE UPPER IS THE DESIGN DIMENSION, LOWER IS SECONDARY

DRAFT WHERE APPLICABLE MUST REMAIN WITHIN DIMENSIONS

PART NO.  
DWG. NO.



l) tails to fit in PC-board layout



REVISIONS		FIRST ANGLE PROJECTION		REVISE ONLY ON CAD SYSTEM	
ECN MG1898-2586	L +0.4-0.2, Lockbild 97-09-18 KN	DRWG BY	KN	CAD/CAM PROJECT NAME	85054000 611
L TR	FOR PREVIOUS REVISIONS SEE MRI LIST	UNLESS OTHERWISE SPECIFIED TOLERANCES: ANGULAR ±2°		THIS DRAWING CONTAINS INFORMATION THAT IS PROPRIETARY TO MOLEX INC. & SHOULD NOT BE USED WITHOUT WRITTEN PERMISSION	
		INCH	METRIC	TITLE	
		3 PLACE ±	±	128 pos. female connector	
		2 PLACE ±	±	DIN 41612 complies with	
		1 PLACE ±	±	style R, Dimensions	
		DRAFT WHERE APPLICABLE MUST REMAIN WITHIN DIMENSIONS		MOLEX EUROPE	
		DESIGN DIMENSION	<input checked="" type="checkbox"/> MM	SHEET NO. DATE	
		EQUIVALENT DIMENSION	<input type="checkbox"/> IN.	1 OF 1 96/07/29	
		IF TWO DIMENSIONS ARE SHOWN THE UPPER IS THE DESIGN DIMENSION, LOWER IS SECONDARY		PART NO. DWG NO.	
		SCALE	2:1	SDA-85054-0001 B	