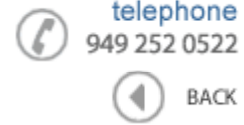




Data Sheet



Product Category: RF SAW Filter

Part Number	Package	Application	Last Modified
807-IF246.0M-B	7.0 x 5.0 SMD	Mobile Communication	Jan. 01, 2007

TYPE :
IF SAW Filter



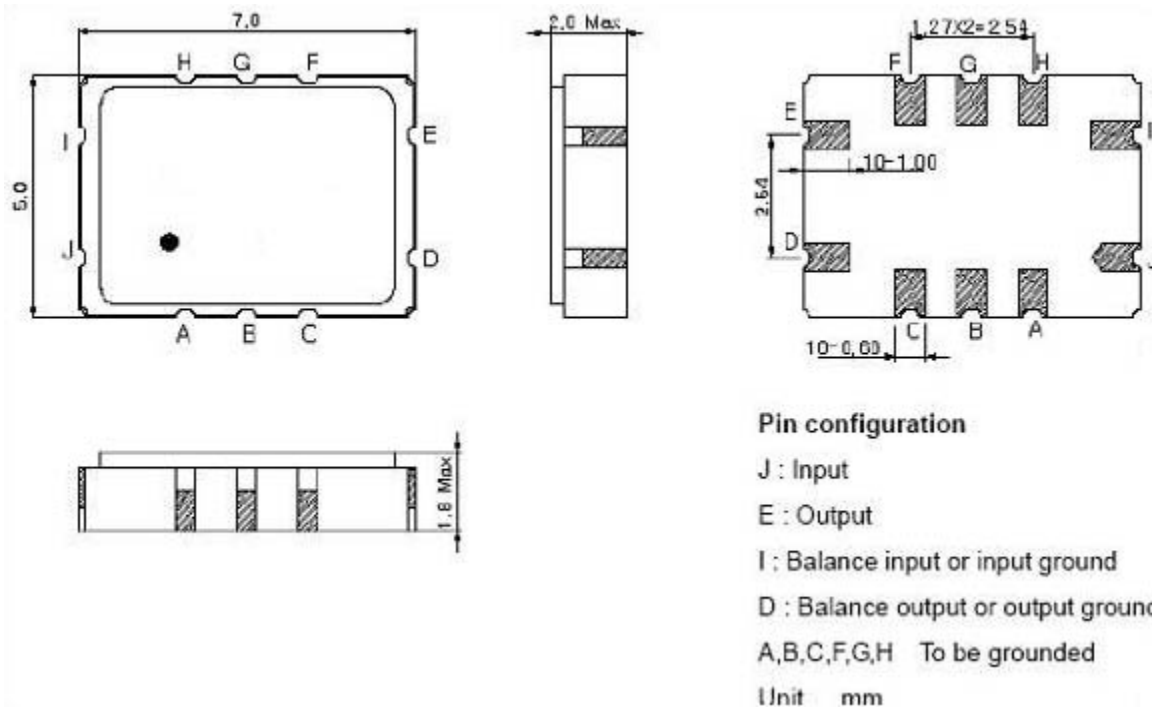
PART NUMBER :
807-IF246.0M-B

OPERATING CONDITIONS / ELECTRICAL CHARACTERISTICS

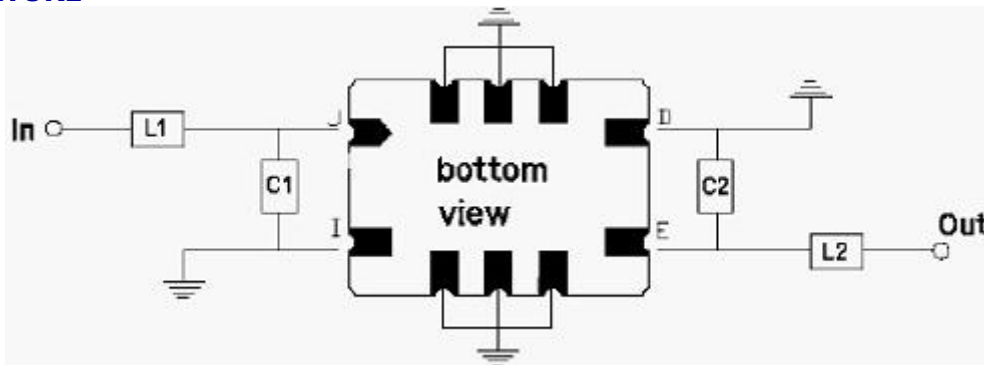
PARAMETERS	Condition	Minimum	Typical	Maximum	Units
Center Frequency (Fo)	-	-	246	-	MHz
Minimum Insertion Loss	Fo +/- 50.0 kHz	-	5.0	6.5	dB
Stop Band Attenuation:	Fo -25.00 ~ Fo-0.60 MHz	50.0	58.0	-	dB
	Fo -0.60 ~ Fo -0.40 MHz	32.0	45.0	-	
	Fo -0.40 ~ Fo -0.20 MHz	10.0	25.0	-	
	Fo +0.20 ~ Fo +0.40 MHz	10.0	25.0	-	
	Fo -0.40 ~ Fo -0.60 MHz	32.0	45.0	-	
Fo -0.60 ~ Fo -25.0 MHz	50.0	60.0	-		
Source Impedance (single ended)*	-	-	50	-	ohm
Load Impedance (single ended)*	-	-	50	-	ohm
Amplitude Ripple	Fo +/- 50.0 kHz	-	1.2	2.0	dBp-p

* With Matching Network (Ref. Testing Environment Circuit as shown below)

PACKAGE OUTLINE (mm)

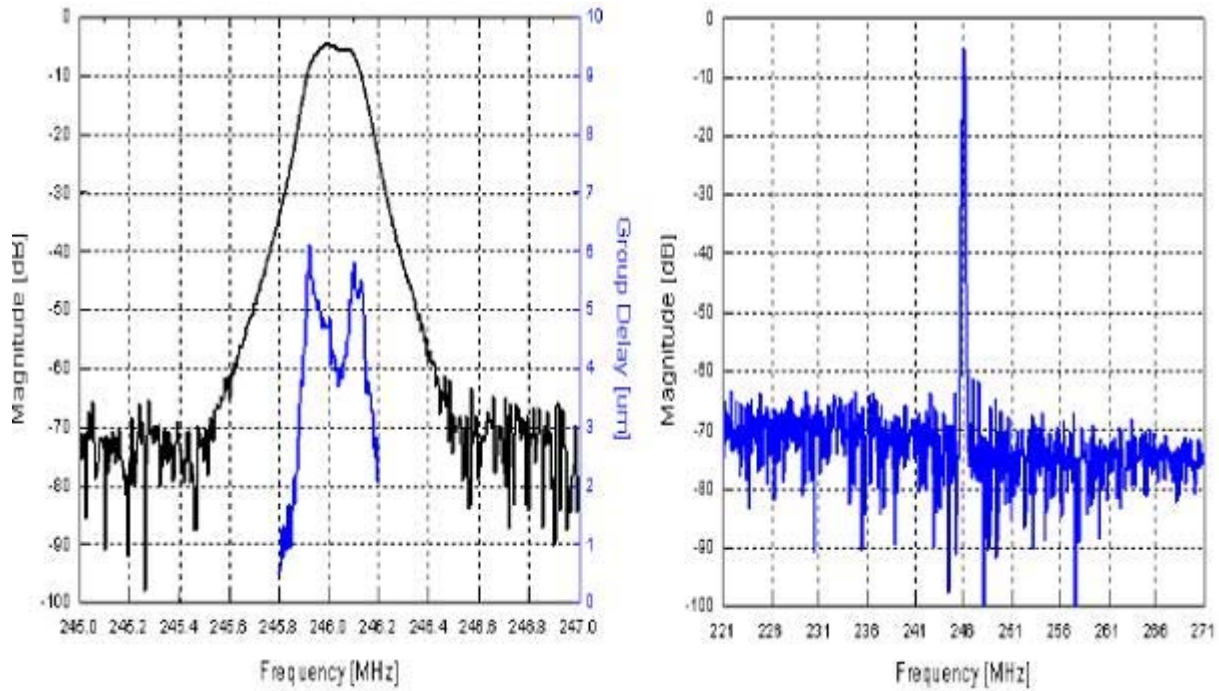


TEST FIXTURE



TEST FIXTURE AND VALUES/SOURCE AND LOAD IMPEDANCE 50 ohm
 INPUT: L1: 68 nH; C1: 0.75pF
 OUTPUT: L2: 120 nH; C2: 0.5pF

FREQUENCY RESPONSE



Oscilent Corporation - CALL **949.252.0522**

Part No.: 807-IF246.0M-B

18195 East McDermott Street, Building D, Irvine, CA 92614, USA
Fax: 949.252.0599, E-Mail: Sales@Oscilent.com