



Data Sheet



Product Category: IF SAW Filter

Part Number
820-IF70.0M-C

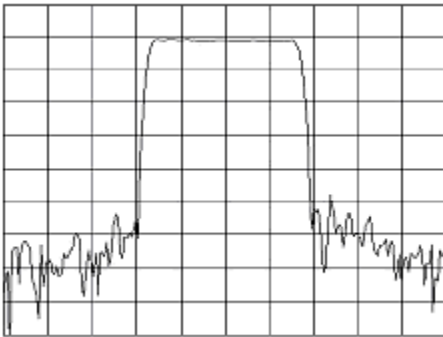
Package
20.2 x 12.6 Thru Hole

Application
Base Station & Repeater

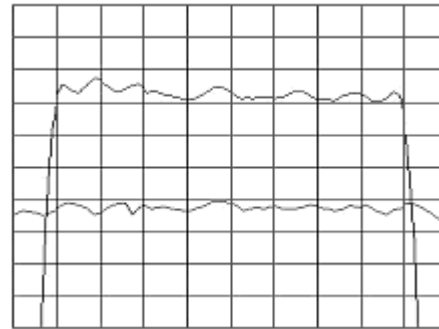
Last Modified
May 02 2003

TYPE :
70.0 MHz Bandpass Filter
9.8 MHz Bandwidth

PART NUMBER :
820-IF70.0M-C



Horizontal : 3.0 MHz/Div
Vertical : 10 dB/Div



Horizontal : 1.2 MHz/Div
Vertical : 1 dB/Div
Vertical : 100 ns/Div

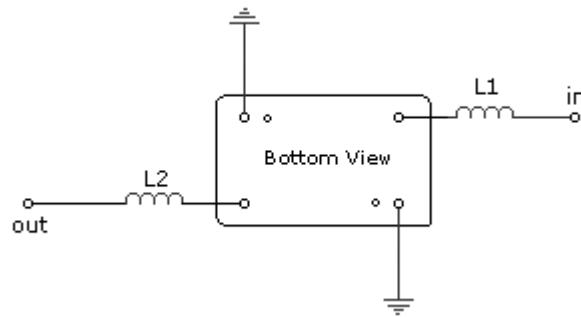
OPERATING CONDITIONS / ELECTRICAL CHARACTERISTICS

PARAMETERS	Minimum	Typical	Maximum	Units
Center Frequency	69.94	70.00	70.06	MHz
Insertion Loss	-	21.0	23.0	dB
1dB Bandwidth	9.4	9.6	-	MHz
3dB Bandwidth	9.8	10.0	-	MHz
40dB Bandwidth	-	11.4	11.6	MHz
Passband Ripple	-	0.8	1.0	dB
Group Delay Variation	-	60	100	nsec
Absolute Delay	-	2.57	-	µsec
Ultimate Rejection	50	60	-	dB
Substrate Material	-	LN	-	-
Ambient Temperature	-	25	-	°C

* Custom SAW IF Filters available. Contact Oscilent for assistance.

PACKAGE OUTLINE (mm)

TEST FIXTURE



L1 = 120nH

L2 = 120nH

Source/Load Impedance = 50 ohms

Oscilent Corporation - CALL **949.252.0522**

17962 Sky Park Circle, Building D, Irvine, CA 92614, USA
 Fax: 949.252.0599, E-Mail: Sales@Oscilent.com

Part No.: 820-IF70.0M-C