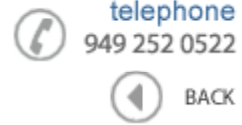




**Data Sheet**



Product Category: IF SAW Filter

Part Number	Package	Application	Last Modified
821-IF120.0M-C	20 x9.8 SMD	120.0 MHz IF SAW Filter	Jan. 01, 2007

TYPE :  
120.0 MHz IF SAW Filter



PART NUMBER :  
**821-IF120.0M-C**

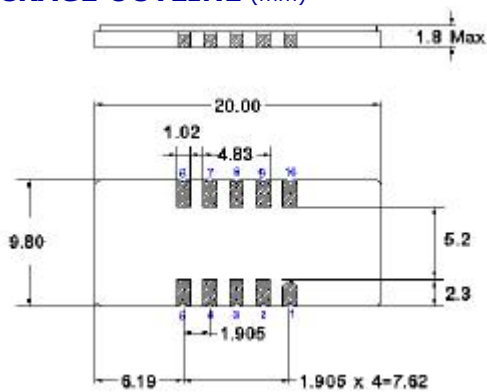
**OPERATING CONDITIONS / ELECTRICAL CHARACTERISTICS**

PARAMETERS	Minimum	Typical	Maximum	Units
Center Frequency (Fo)	119.9	120.0	120.1	MHz
Insertion Loss	-	21.5	25.5	dB
Source Impedance (single ended)*	-	50	-	ohm
Load Impedance (single ended)*	-	50	-	ohm
Temperature Coefficient	-	-72	-	ppm/C
Amplitude Ripple within fo+/-9.75Mhz	-	0.7	1.0	dBp-p
1dB Bandwidth	-	20.2	-	MHz
3dB Bandwidth	20.4	20.5	-	MHz
40dB Bandwidth	-	21.8	22.0	MHz
Lower Sidelobe	50	-	-	dB
Upper Sidelobe	50	-	-	dB
Absolute Delay at Fo	-	2.3	-	µsec
Group Delay Variation w/ fo+/-9.75Mhz	-	40	100	nsec

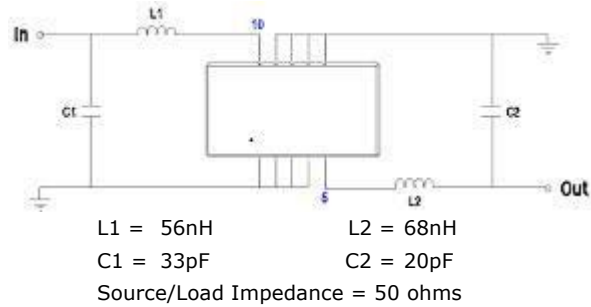
\*With Matching Network (Ref. Testing Environment Circuit as shown below). Those impedances could be modified with different impedance values and/or structures, if necessary.

\*\* Custom SAW IF Filters available. Contact Oscilent for assistance.

**PACKAGE OUTLINE (mm)**

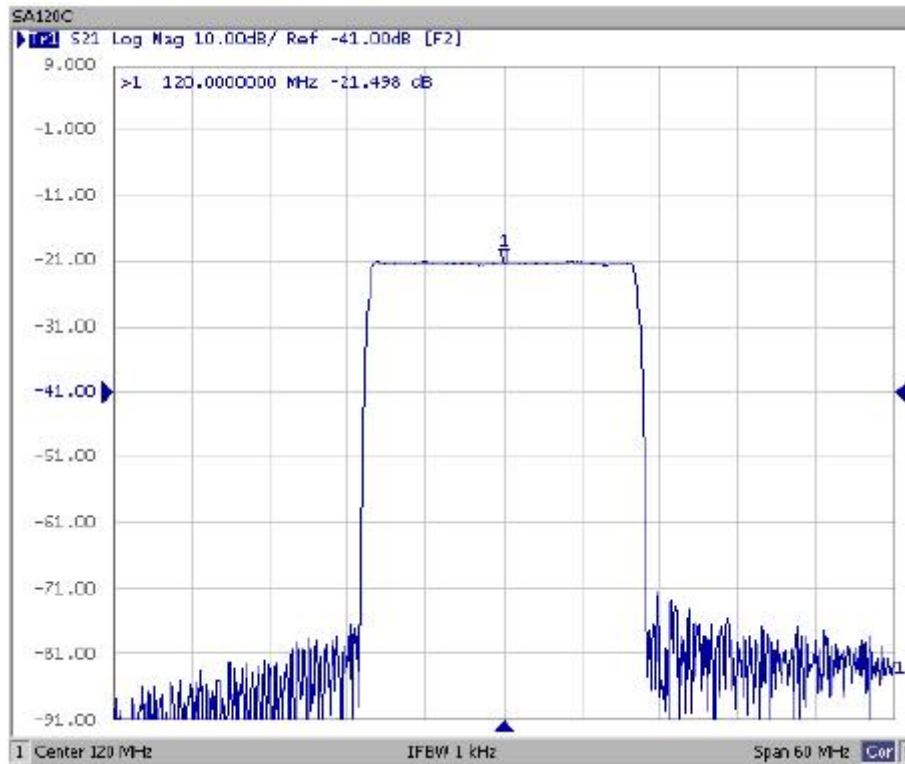


**TEST FIXTURE**



Pin Descriptions: IN-10, OUT-5, GROUND- 1,2,3,4,6,7,8,9

**FREQUENCY RESPONSE**



**Oscilent Corporation** - CALL **949.252.0522**

**Part No.:** 821-IF120.0M-C

18195 East McDermott Street, Building D, Irvine, CA 92614, USA  
Fax: 949.252.0599, E-Mail: Sales@Oscilent.com