

PLEASE CHECK WWW.MOLEX.COM FOR LATEST PART INFORMATION

Part Number: [0310731010](#)
Status: **Active**
Overview: [hdac 64 single row](#)
Description: 2.54mm (.100") H-DAC 64™, 6 Way Receptacle Assembly, Single-Row, Polarization A

Documents:

[Drawing \(PDF\)](#) [Product Specification PS-31100-0001 \(PDF\)](#)
[Application Specification \(PDF\)](#) [RoHS Certificate of Compliance \(PDF\)](#)
[Product Specification PS-31067-0001 \(PDF\)](#)

General

Product Family Crimp Housings
Series [31073](#)
Comments Polarization Option A, Black
Overview [hdac 64 single row](#)
Product Name H-DAC 64™

Physical

Circuits (maximum) 6
Circuits Detail 6
Color - Resin Black, White
Gender Female
Glow-Wire Compliant No
Keying to Mating Part None
Lock to Mating Part Yes
Material - Resin Modified Polystyrene, Polyester
Number of Rows 1
Packaging Type Bag
Panel Mount No
Pitch - Mating Interface (in) 0.100 In
Pitch - Mating Interface (mm) 2.54 mm
Pitch - Term. Interface (in) 0.100 In
Pitch - Term. Interface (mm) 2.54 mm
Polarized to Mating Part Yes
Ports 1
Stackable No
Temperature Range - Operating -40°C to +100°C

Electrical

Current - Maximum per Contact 11A, 9A

Material Info

Reference - Drawing Numbers

Application Specification AS-31067-100
Packaging Specification PK-30907-737, PK-31301-076
Product Specification PS-31067-0001, PS-31100-0001
Sales Drawing SD-31109-003



EU RoHS

ELV and RoHS Compliant
REACH SVHC
Contains SVHC: No
Halogen-Free
Status

China RoHS



Need more information on product environmental compliance?

Email productcompliance@molex.com
For a multiple part number RoHS Certificate of Compliance, [click here](#)

Please visit the [Contact Us](#) section for any non-product compliance questions.

Search Parts in this Series

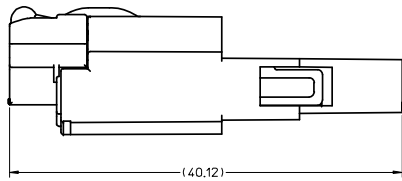
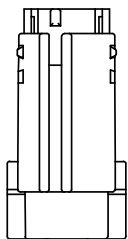
[31073Series](#)

Mates With

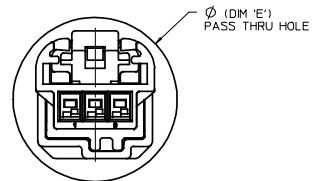
H-DAC 64™, 6 Way Male Housing Assembly [310731040](#) , [310731070](#)

Use With

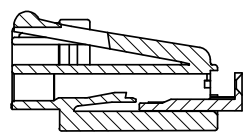
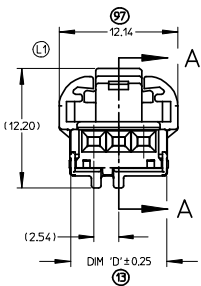
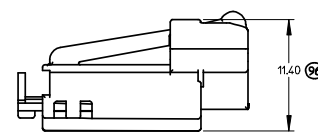
See Product Spec



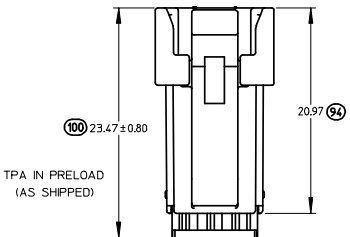
OVERALL MATED LENGTH



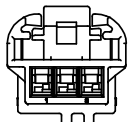
MALE AND FEMALE ASSEMBLY
PASS THRU VIEW
(CAD GENERATED)



SECTION A-A
SCALE 4:1



TPA IN PRELOAD
(AS SHIPPED)



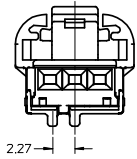
WIRE SIDE

- NOTES:
1. MATERIAL: HOUSING: SPS GLASS FILLED, COLOR SEE CHART.
TPA: PBT
 2. PRODUCT SPECIFICATIONS - IN-LINE MATING INTERFACE: PS-31067-0001.
- DIRECT CONNECT MATING INTERFACE: PS-31100-0001.
 3. PACKAGING SPECIFICATION: DRAWING PK-30907-737.
 4. MATES WITH: SEE SALES DRAWINGS SD-31100-003 (MALE IN-LINE),
SD-31197-003 (RIGHT ANGLE HEADER), SD-31101-114 (VERTICAL
"WINGED" HEADER), AND SD-31206-003 (VERTICAL HEADER).
 5. TERMINAL PLATING: TIN (Sn) OVERALL, BRITTE FINISH.
THICKNESS = 15 MICROMETER MINIMUM,
NICKEL (Ni) UNDERPLATE OVERALL.
 6. PACKAGING: PLEASE REFERENCE MOLEX SPECIFICATION PS-34646-001,
AVAILABLE AT WWW.MOLEX.COM. (REFERENCE: TPAs THAT ARE FOUND IN
SEATED (FINAL LOCK) POSITION)
 7. APPLICATION SPECIFICATION: AS-31067-100.

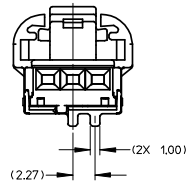
ENTER DESCRIPTION IEC NO. UAU2008-0767 DRAWN: MACHUGA 2008/07/08 CHECKED: CHYKOBLOCK 2008/07/09 APPR: SMARCEAU 2008/07/09	QUALITY SYMBOLS ▽=0 ▽=0	GENERAL TOLERANCES (UNLESS SPECIFIED)		DIMENSION STYLE MM ONLY	SCALE 1:1	DESIGN UNITS METRIC	THIRD ANGLE PROJECTION									
		4 PLACES ± --- ± ---	3 PLACES ± --- ± ---	2 PLACES ± 0.13 ± ---	1 PLACE ± 0.25 ± ---	ANGLAR ± 1/2°	DRAFT WHERE APPLICABLE MUST REMAIN WITHIN DIMENSIONS	DRAWN BY BDLCK01	DATE 6/22/2007	CHECKED BY CDILLON	DATE 6/22/2007	APPROVED BY	DATE	MATERIAL NO. SEE CHART	DOCUMENT NO. SD-31109-003	SHEET NO. 1 OF 4
		MOLEX INCORPORATED							TITLE FEMALE ASSEMBLY CHARTED SALES DRAWING							
		THIS DRAWING CONTAINS INFORMATION THAT IS PROPRIETARY TO MOLEX INCORPORATED AND SHOULD NOT BE USED WITHOUT WRITTEN PERMISSION														

FEMALE VIEWED FROM MATING SIDE

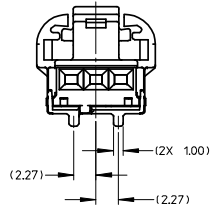
3 WAY POLARIZATION 'A'



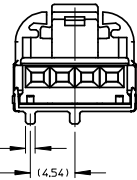
3 WAY POLARIZATION 'B'



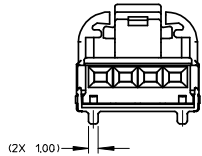
3 WAY POLARIZATION 'C'



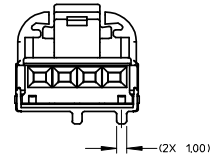
4 WAY POLARIZATION 'A'



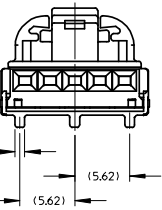
4 WAY POLARIZATION 'B'



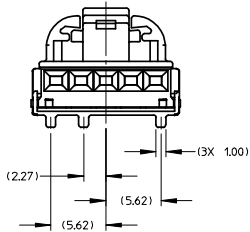
4 WAY POLARIZATION 'C'



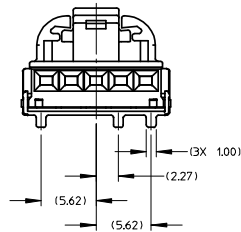
5 WAY POLARIZATION 'A'



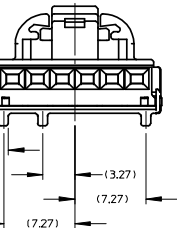
5 WAY POLARIZATION 'B'



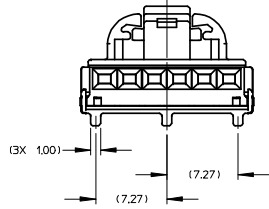
5 WAY POLARIZATION 'C'



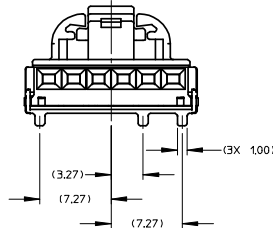
6 WAY POLARIZATION 'A'



6 WAY POLARIZATION 'B'



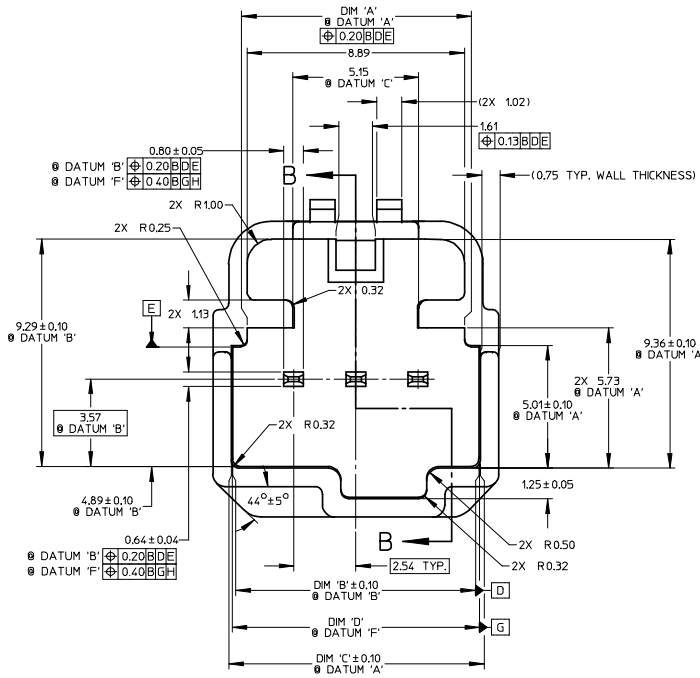
6 WAY POLARIZATION 'C'



BILL OF MATERIALS						MATING ASSEMBLIES PART NUMBERS					
ASSEMBLY PART NUMBER	DESCRIPTION	PART NUMBER	DESCRIPTION	COLOR	DIM 'D'	DIM 'E'	INLINE MALE ASSEMBLY W/O XMAS SLOT	INLINE MALE ASSEMBLY W/ XMAS SLOT	RIGHT ANGLE MALE HEADER ASSEMBLY	VERTICAL MALE HEADER ASSEMBLY	VERTICAL MALE WINGED HEADER ASSY
31067-1010	3 WAY FEMALE ASSEMBLY POLARIZATION 'A'	31111-0030	FEMALE HOUSING	BLACK	9.80	16.76	31067-1040	31067-1070	31100-0030 NOT TOOLED	31101-0030 NOT TOOLED	TBD
		31113-0030	TPA	NATURAL (WHITE)							
31067-1011	3 WAY FEMALE ASSEMBLY POLARIZATION 'B'	31111-0031	FEMALE HOUSING	GRAY	9.80	16.76	31067-1041	31067-1071	31100-0031 NOT TOOLED	31101-0031 NOT TOOLED	TBD
		31113-0030	TPA	NATURAL (WHITE)							
31067-1012	3 WAY FEMALE ASSEMBLY POLARIZATION 'C'	31111-0032	FEMALE HOUSING	BROWN	9.80	16.76	31067-1042	31067-1072	31100-0032 NOT TOOLED	31101-0032 NOT TOOLED	TBD
		31113-0030	TPA	NATURAL (WHITE)							
31068-1010	4 WAY FEMALE ASSEMBLY POLARIZATION 'A'	31157-0040	FEMALE HOUSING	BLACK	12.34	18.25	31068-1040	31068-1070	31100-0040	31101-0040	31101-1140
		31158-0040	TPA	NATURAL (WHITE)							
31068-1011	4 WAY FEMALE ASSEMBLY POLARIZATION 'B'	31157-0041	FEMALE HOUSING	GRAY	12.34	18.25	31068-1041	31068-1071	31100-0041	31101-0041	31101-1240
		31158-0040	TPA	NATURAL (WHITE)							
31068-1012	4 WAY FEMALE ASSEMBLY POLARIZATION 'C'	31157-0042	FEMALE HOUSING	BROWN	12.34	18.25	31068-1042	31068-1072	31100-0042	31101-0042	31101-1340
		31158-0040	TPA	NATURAL (WHITE)							
31072-1010	5 WAY FEMALE ASSEMBLY POLARIZATION 'A'	31160-0050	FEMALE HOUSING	BLACK	14.88	20.25	31072-1040	31072-1070	31100-0050 NOT TOOLED	31101-0050 NOT TOOLED	TBD
		31161-0050	TPA	NATURAL (WHITE)							
31072-1011	5 WAY FEMALE ASSEMBLY POLARIZATION 'B'	31160-0051	FEMALE HOUSING	GRAY	14.88	20.25	31072-1041	31072-1071	31100-0051 NOT TOOLED	31101-0051 NOT TOOLED	TBD
		31161-0050	TPA	NATURAL (WHITE)							
31072-1012	5 WAY FEMALE ASSEMBLY POLARIZATION 'C'	31160-0052	FEMALE HOUSING	BROWN	14.88	20.25	31072-1042	31072-1072	31100-0052 NOT TOOLED	31101-0052 NOT TOOLED	TBD
		31161-0050	TPA	NATURAL (WHITE)							
31073-1010	6 WAY FEMALE ASSEMBLY POLARIZATION 'A'	31163-0060	FEMALE HOUSING	BLACK	17.42	22.75	31073-1040	31073-1070	31100-0060 NOT TOOLED	31101-0060 NOT TOOLED	TBD
		31164-0060	TPA	NATURAL (WHITE)							
31073-1011	6 WAY FEMALE ASSEMBLY POLARIZATION 'B'	31163-0061	FEMALE HOUSING	GRAY	17.42	22.75	31073-1041	31073-1071	31100-0061 NOT TOOLED	31101-0061 NOT TOOLED	TBD
		31164-0060	TPA	NATURAL (WHITE)							
31073-1012	6 WAY FEMALE ASSEMBLY POLARIZATION 'C'	31163-0062	FEMALE HOUSING	BROWN	17.42	22.75	31073-1042	31073-1072	31100-0062 NOT TOOLED	31101-0062 NOT TOOLED	TBD
		31164-0060	TPA	NATURAL (WHITE)							

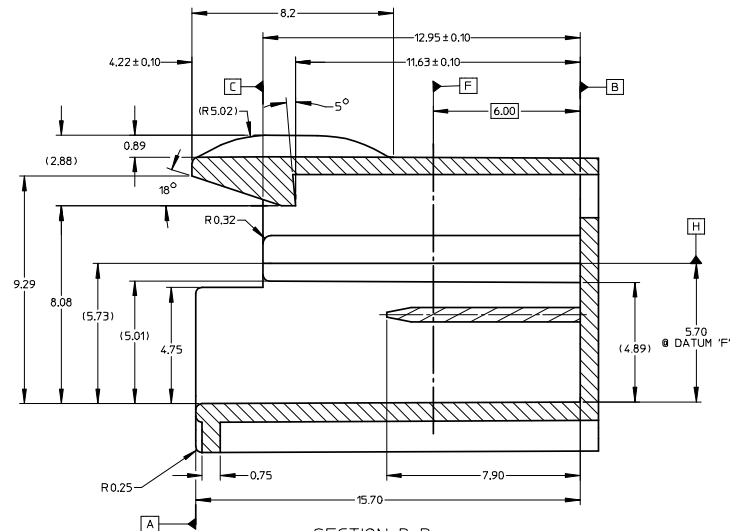
ENTER DESCRIPTION IEC NO. UAU2008-0767 DRAWN/TMACHUGA 2008/07/08 CHYK/BDLCK 2008/07/09 APPR./SMARCEAU 2008/07/09	QUALITY SYMBOLS ▽=0 ▽=0	GENERAL TOLERANCES (UNLESS SPECIFIED)		DIMENSION STYLE MM ONLY	SCALE 1:1	DESIGN UNITS METRIC	THIRD ANGLE PROJECTION	
		4 PLACES ± mm INCH ± ---	3 PLACES ± --- ± ---	2 PLACES ± 0.13 ± ---	1 PLACE ± 0.25 ± ---	ANGLULAR ±1/2°		DRAFT WHERE APPLICABLE MUST REMAIN WITHIN DIMENSIONS
		MATERIAL NO. SEE CHART		DATE 6/22/2007		DATE 6/22/2007		DOCUMENT NO. SD-31109-003
		THIS DRAWING CONTAINS INFORMATION THAT IS PROPRIETARY TO MOLEX INCORPORATED AND SHOULD NOT BE USED WITHOUT WRITTEN PERMISSION						

REFERENCE ONLY

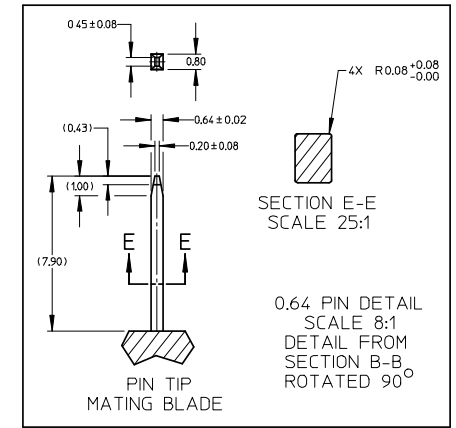


MATING INTERFACE DETAIL
SCALE 10:1

RECOMMENDED MATING MATERIAL: SPS, 30% GLASS FILLED.



SECTION B-B
SCALE 10:1



SECTION E-E
SCALE 25:1

0.64 PIN DETAIL
SCALE 8:1
DETAIL FROM
SECTION B-B
ROTATED 90°

PIN TIP
MATING BLADE

RECOMMENDED DIRECT CONNECT INFO
FOR MATING FEMALE PARTS ONLY

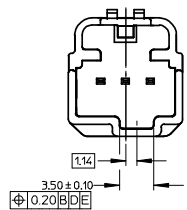
DIMENSIONS FOR DIRECT CONNECT

CIRCUIT SIZE	DIM 'A'	DIM 'B'	DIM 'C'	DIM 'D'
3	8.89	10.05	10.19	10.11
4	11.20	12.59	12.73	12.65
5	13.74	15.13	15.27	15.19
6	16.28	17.67	17.81	17.73

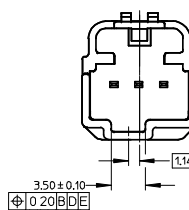
ENTER DESCRIPTION IEC NO. UAU2008-0767 DRAWN BY: TACHIGA 2008/07/08 CHYK/BDOCK 2008/07/09 APPR: SARCEAU 2008/07/09	QUALITY SYMBOLS ▽=0 ▽=0	GENERAL TOLERANCES (UNLESS SPECIFIED)		DIMENSION STYLE MM ONLY	SCALE 1:1	DESIGN UNITS METRIC	THIRD ANGLE PROJECTION	
		4 PLACES ± mm ± INCH 3 PLACES ± --- ± --- 2 PLACES ± 0.13 ± --- 1 PLACE ± 0.25 ± ---		DRAWN BY: BDLCK01' DATE: 6/22/2007 CHECKED BY: CDILLON DATE: 6/22/2007 APPROVED BY: DATE:		TITLE FEMALE ASSEMBLY CHARTED SALES DRAWING		
		ANGULAR ±1/2°		MATERIAL NO. SEE CHART		DOCUMENT NO. SD-31109-003		
		DRAFT WHERE APPLICABLE MUST REMAIN WITHIN DIMENSIONS		THIS DRAWING CONTAINS INFORMATION THAT IS PROPRIETARY TO MOLEX INCORPORATED AND SHOULD NOT BE USED WITHOUT WRITTEN PERMISSION				

REFERENCE ONLY

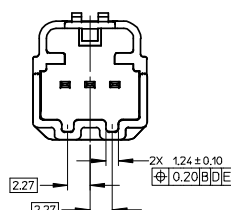
3 WAY POLARIZATION "A"



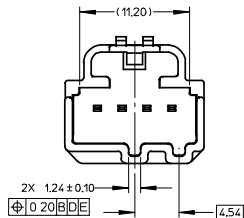
3 WAY POLARIZATION "B"



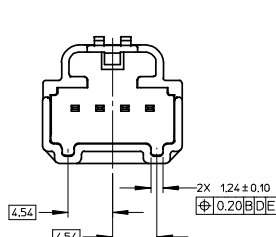
3 WAY POLARIZATION "C"



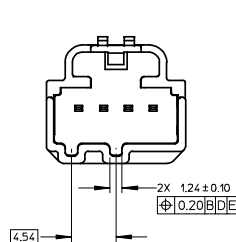
4 WAY POLARIZATION "A"



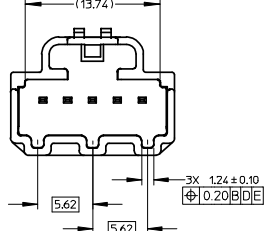
4 WAY POLARIZATION "B"



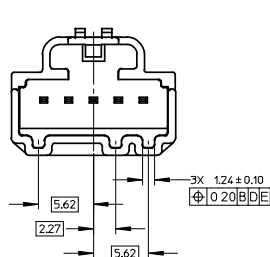
4 WAY POLARIZATION "C"



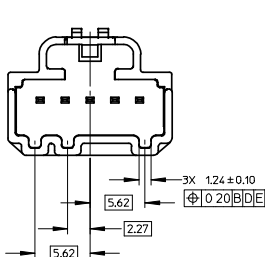
5 WAY POLARIZATION "A"



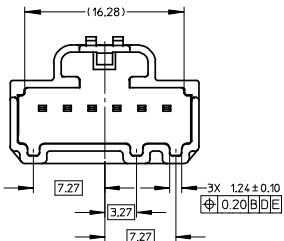
5 WAY POLARIZATION "B"



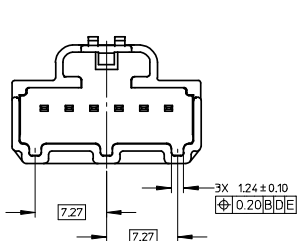
5 WAY POLARIZATION "C"



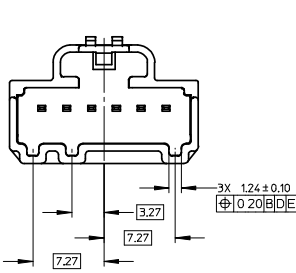
6 WAY POLARIZATION "A"



6 WAY POLARIZATION "B"



6 WAY POLARIZATION "C"



ENTER DESCRIPTION IEC NO: UAU2008-0767 DRAWN: MACHIGA 2008/07/08 CHKD: BDI CK 2008/07/09 APPR: SMARCEAU 2008/07/09 REV: DESCRIPTION	QUALITY SYMBOLS ▽=0 ▽=0		GENERAL TOLERANCES (UNLESS SPECIFIED) mm INCH		DIMENSION STYLE MM ONLY		SCALE 4:1 DESIGN UNITS METRIC		THIRD ANGLE PROJECTION	
	4 PLACES ± --- ± ---		3 PLACES ± --- ± ---		2 PLACES ± 0.13 ± ---		1 PLACE ± 0.25 ± ---		DRAWN BY BDI CK01' DATE 6/22/2007 CHECKED BY CDILLON DATE 6/22/2007 APPROVED BY DATE	
	ANGULAR ± 1/2°		DRAFT WHERE APPLICABLE MUST REMAIN WITHIN DIMENSIONS		SEE CHART		MATERIAL NO. SD-31109-003 DOCUMENT NO.		TITLE FEMALE ASSEMBLY CHARTED SALES DRAWING MOLEX INCORPORATED SHEET NO. 4 OF 4	
	THIS DRAWING CONTAINS INFORMATION THAT IS PROPRIETARY TO MOLEX INCORPORATED AND SHOULD NOT BE USED WITHOUT WRITTEN PERMISSION									