

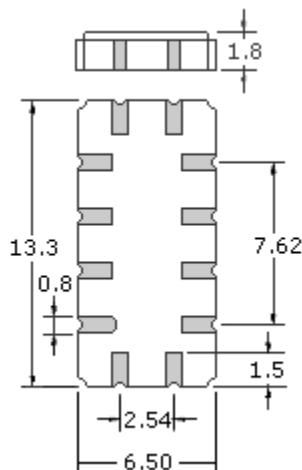
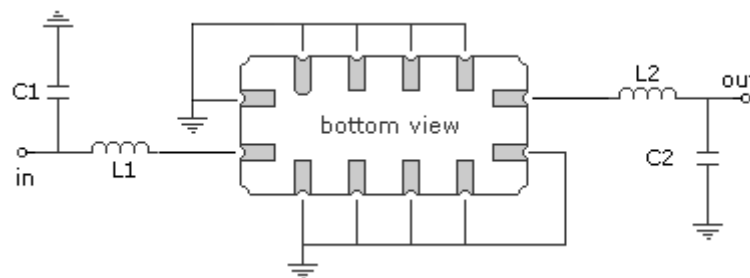
**Data Sheet**

Product Category: IF SAW Filter

Part Number  
813-IF140.0M-GPackage  
13.3 x 6.5 SMDApplication  
Base Station & RepeaterLast Modified  
May 30 2003**TYPE :**140.0 MHz Bandpass Filter  
9.6 MHz Bandwidth**PART NUMBER :****813-IF140.0M-G****OPERATING CONDITIONS / ELECTRICAL CHARACTERISTICS**

PARAMETERS	Minimum	Typical	Maximum	Units
Center Frequency	-	140.0	-	MHz
Insertion Loss	-	21.5	23.0	dB
1dB Bandwidth	8.8	9.0	-	MHz
3dB Bandwidth	9.6	9.8	-	MHz
40dB Bandwidth	-	12.0	12.5	MHz
Passband Ripple (Fo ±4.0MHz)	-	0.85	1.2	dB
Group Delay Variation (Fo ±4.0MHz)	-	70	150	nsec
Ultimate Rejection	40	42	-	dB
Temperature Coefficient	-	-18	-	ppm/K

\* Custom SAW IF Filters available. Contact Oscilent for assistance.

**PACKAGE OUTLINE (mm)****TEST FIXTURE**

L1 = 33nH                      C1 = 43pF  
 L2 = 47nH                      C2 = 33pF  
 Source/Load Impedance = 50 ohms

**Oscilent Corporation** - CALL **949.252.0522****Part No.:** 813-IF140.0M-G17962 Sky Park Circle, Building D, Irvine, CA 92614, USA  
Fax: 949.252.0599, E-Mail: Sales@Oscilent.com