

1. FEATURES

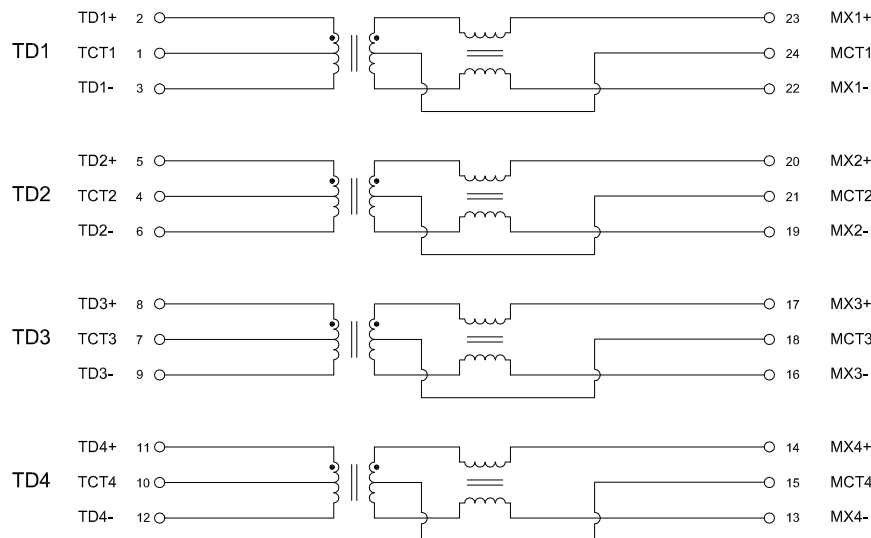
1. Designed for long haul Gigabit Ethernet 1000 Base-T, Full Duplex applications
2. Supports Category 5 UTP cable
3. Low Common Mode Emissions
4. Compliant with IEEE 802.3ab Standard for 1000 Base-T
5. Operating Temperature range : 0°C to +70°C
6. Storage Temperature range : -25°C to +125°C

2. ELECTRICAL SPECIFICATIONS (AT 25°C)

OCL: 350uH @ 100KHz, 100mV/8mA DC bias

| Turns Ratio | Insertion Loss (dB Max.) | Return Loss 100Ω±15Ω (dB Min.) | | | | | | Cross Talk (dB Min.) | | | C.M.R. (dB Min.) | | | Hi-Pot (Vrms) |
|-------------|--------------------------|--------------------------------|--------|--------|-----------|---------|--------|----------------------|---------|--------|------------------|---------|-----------|---------------|
| | | 1-30 MHz | 40 MHz | 50 MHz | 60-80 MHz | 100 MHz | 30 MHz | 60 MHz | 100 MHz | 30 MHz | 60 MHz | 100 MHz | | |
| TD1/2/3/4 | 1-100 MHz | 1-30 MHz | 40 MHz | 50 MHz | 60-80 MHz | 100 MHz | 30 MHz | 60 MHz | 100 MHz | 30 MHz | 60 MHz | 100 MHz | 60Hz/1min | |
| 1CT:1CT | -1.0 | -18.0 | -14.4 | -13.1 | -12.0 | -10.0 | -45.0 | -40.0 | -35.0 | -40.0 | -35.0 | -30.0 | 1500 | |

3. SCHEMATIC :



RoHS Compliant

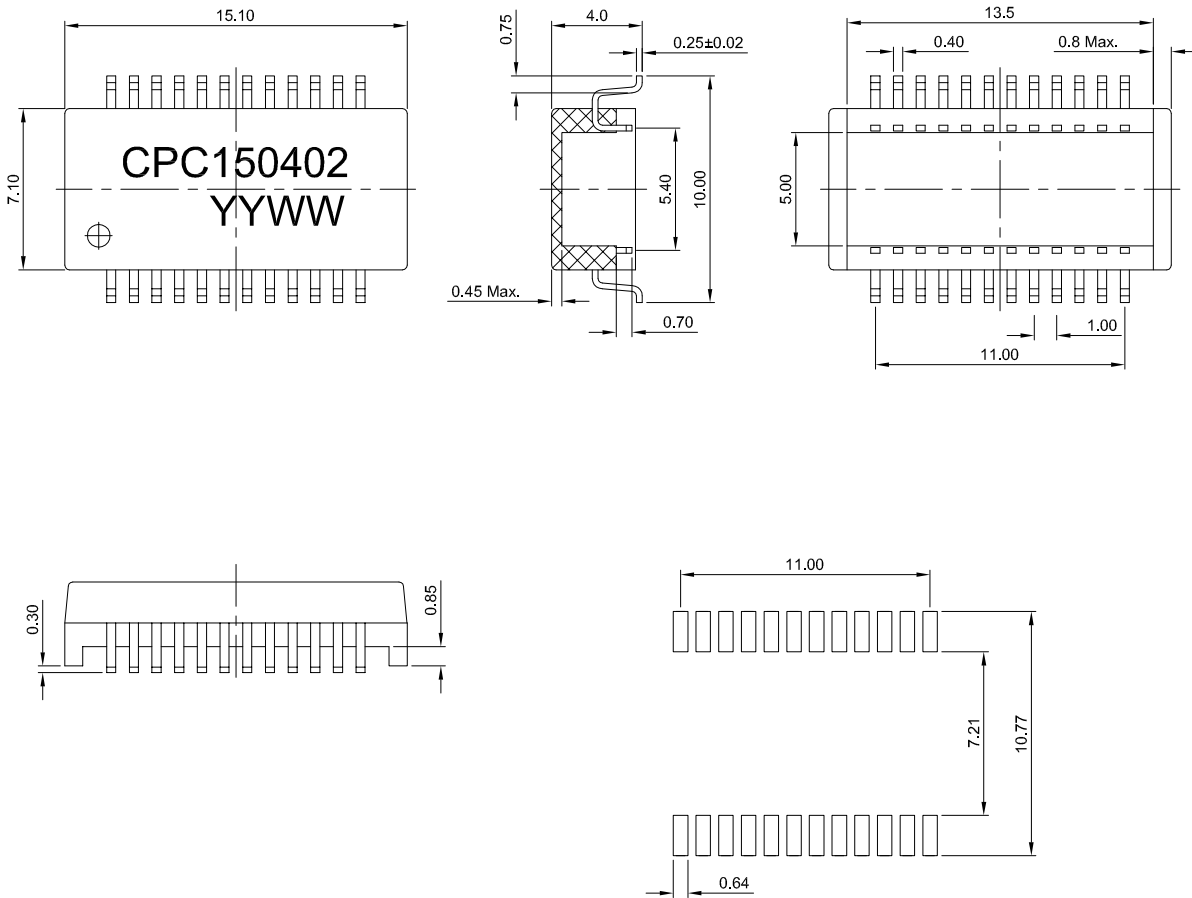
NOTE : Specifications subject to change without notice. Please check our website for latest information.

01.12.2008



SUPERWORLD ELECTRONICS (S) PTE LTD

4. MECHANICAL DIMENSIONS : (mm)



Dimension Tolerances:

x.x = ± 0.10
 x.xx = ± 0.05
 x.xxx = ± 0.03

NOTE : Specifications subject to change without notice. Please check our website for latest information.



RoHS Compliant

01.12.2008



SUPERWORLD ELECTRONICS (S) PTE LTD