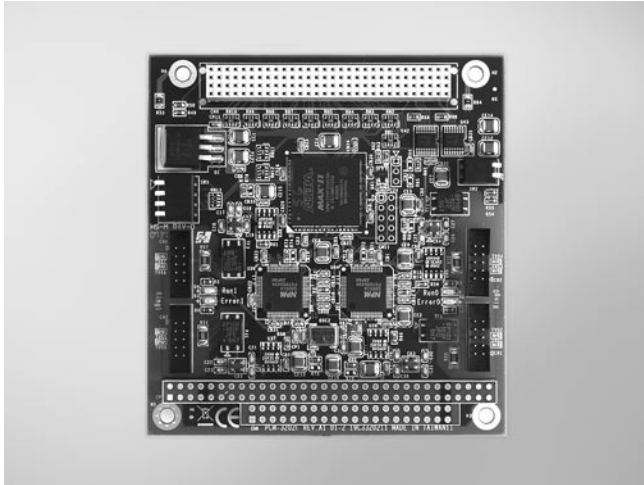


PCM-32021

2-port AMONet RS-485 PCI-104 Master Card



Features

- Max. 20 Mbps transfer rate
- Supports 2 independent AMONet RS-485 rings
- Supports up to 128 AMONet RS-485 slave modules
- Easy installation with Box Header and LED diagnostics
- Max. 100 m (20 Mbps/32 slave modules) communication distance

Introduction

PCM-32021 is a PCI-104 interface card which supports two AMONet RS-485 master rings, and transfers data between host and slaves directly without any operations in between. Each ring can control up to 2,048 I/O points, 256 axes, or a combination of I/O points and axes for motion control. The ring can support up to 20 Mbps transfer rate and a maximum communication distance of up to 100 meters.

The communication between master and slave is based on a customized RS-485 solution that saves wires, covers a long distance, supports high-speed communication and has time-deterministic features. The communication interface between master and host PC is accomplished by memory mapping. Various functions can be chosen on the slave modules, and standard industrial DIN-rail mounting design makes it easy to distribute them in the field. The master collects information from slave modules and publishes the information to its host PC.

Specifications

AMONet RS-485 Motion Control

- **AMONet RS-485 Rings** 2
- **Interface** Half duplex RS-485
- **Cable Type** CAT5 UTP/STP Ethernet cable
- **Surge Protection** 10 kV
- **Transmission Speeds** 2.5, 5, 10, and 20 Mbps
- **Data Flow Control** Automatic
- **Communication Distance** 100 m @ 20 Mbps w/32 slave modules
- **Slave Module Support** Digital I/O, Motion Control, Analog I/O

General

- **Bus Type** PCI-104
- **Certifications** CE
- **Connectors** 4 x 10-pin box header
- **Dimensions (L x H)** 96 x 90 mm (3.8" x 3.5")
- **Power Consumption** +5 VDC @ 0.5 A typical
- **Humidity** 5 ~ 95% RH, non-condensing (IEC 68-2-3)
- **Operating Temperature** 0 ~ 60° C (32 ~ 140° F)
- **Storage Temperature** -20 ~ 85° C (-4 ~ 185° F)

Ordering Information

- **PCM-32021** 2-port AMONet RS-485 PCI-104 Master Card
- **AMAX-2241/PMA** 4-axis AMONet Motion Module for Panasonic Minus A
- **AMAX-2242/J2S** 4-axis AMONet Motion Module for Mitsubishi MR-J2S
- **AMAX-2243/YS2** 4-axis AMONet Motion Module for Yaskawa Sigma-II
- **AMAX-2752SY** 32-ch Isolated Digital Input AMONet Module
- **AMAX-2754SY** 32-ch Isolated Digital Output AMONet Module
- **AMAX-2756SY** 16/16-ch Isolated Digital I/O AMONet Module
- **PCL-10220M-2** 20-pin SCSI Cable, 2 m
- **PCL-10150M-2** 50-pin SCSI Cable, 2 m