

ROITHNER LASERTECHNIK

SCHOENBRUNNER STRASSE 7, 1040 VIENNA, AUSTRIA

TEL: +43 -1- 586 52 43-0 FAX: +43 -1- 586 52 43-44

office@roithner-laser.com www.roithner-laser.com

FAT-870-40

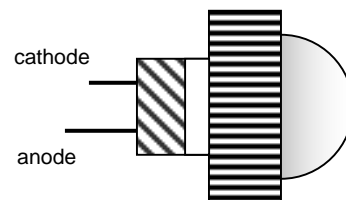
TECHNICAL DATA

INFRARED HIGH POWER LED ARRAY

Wavelength: **typ. 870 nm**

Optical power: **typ. 300 mW at 350 mA**

Package: **M18 x 1 thread package**



Absolute Maximum Ratings (T_c = 25°C)

CHARACTERISTIC	SYMBOL	RATING	UNIT
DC Forward Current	I _F	450	mA
Pulse Forward Current *)	I _{FP}	2.5	A
Allowable Reverse Current	I _R	50	μA
Power Dissipation	P _D	4	W
Operating Temperature	T _{OP}	-60 .. +75	°C
Storage Temperature	T _{STG}	-60 .. +95	°C

*) Pulse width ≤ 10 μs, duty cycle ≤ 0.1

Optical-Electrical Characteristics (T_c = 25°C)

CHARACTERISTIC	SYMBOL	TEST CONDITION	MIN	TYP	MAX	UNIT
DC Forward Voltage	V _F	I _F = 400 mA	10.0	10.5	11.0	V
DC Reverse Current	I _R	V _R = 5 V			50	μA
Optical Output Power	P _O	I _F = 400 mA	300	350	-	mW
Peak Wavelength	λ _P	I _F = 400 mA	850	870	890	nm
Spectrum Half Width FWHM	Δλ	I _F = 400 mA	-	50	-	nm
Viewing Angle FWHM	2θ _{1/2}	I _F = 400 mA		40		°
Rise Time	t _r	I _F = 400 mA		80		ns
Fall Time	t _f	I _F = 400 mA		100		ns
Thermal Resistance	R _T	-		20		K/W