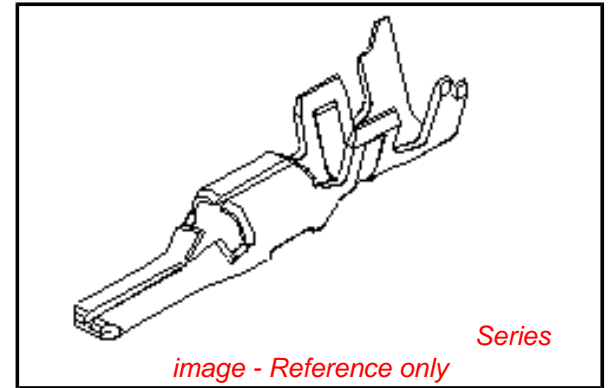


**PLEASE CHECK WWW.MOLEX.COM FOR LATEST PART INFORMATION**

**Part Number:** **0500388100**  
**Status:** **Active**  
**Overview:** splash\_proof  
**Description:** 2.50mm (.098") Pitch Splash Proof Crimp Terminal, 50038, Bag

**Documents:**

<a href="#">Drawing (PDF)</a>	<a href="#">Product Specification PS-52117-004 (PDF)</a>
<a href="#">Product Specification PS-52048-001 (PDF)</a>	<a href="#">Product Specification PS-52117-005 (PDF)</a>
<a href="#">Product Specification PS-52117-001 (PDF)</a>	<a href="#">Product Specification PS-52117-006 (PDF)</a>
<a href="#">Product Specification PS-52117-002 (PDF)</a>	<a href="#">Product Specification PS-52117-007 (PDF)</a>
<a href="#">Product Specification PS-52117-003 (PDF)</a>	<a href="#">RoHS Certificate of Compliance (PDF)</a>



**General**

Product Family	Crimp Terminals
Series	50038
Crimp Quality Equipment	Yes
Overview	splash_proof
Product Name	Splash Proof

**Physical**

Gender	Male
Material - Metal	Phosphor Bronze
Material - Plating Mating	Tin
Material - Plating Termination	Tin
Packaging Type	Bag
Plating min: Mating (µin)	36
Plating min: Mating (µm)	0.90
Plating min: Termination (µin)	36
Plating min: Termination (µm)	0.90
Termination Interface: Style	Crimp or Compression
Wire Insulation Diameter	1.80-1.90mm (.071-.075")
Wire Size AWG	20, 22
Wire Size mm <sup>2</sup>	N/A

**Material Info**

**Reference - Drawing Numbers**

Packaging Specification	SPK-50038-001
Product Specification	PS-52048-001, PS-52117-001, PS-52117-002, PS-52117-003, PS-52117-004, PS-52117-005, PS-52117-006, PS-52117-007, RPS-52048-001
Sales Drawing	SD-50038-8*00

**EU RoHS**

**ELV and RoHS Compliant**  
**REACH SVHC Contains SVHC: No**  
**Halogen-Free Status**

**China RoHS**



**Need more information on product environmental compliance?**

Email [productcompliance@molex.com](mailto:productcompliance@molex.com)  
 For a multiple part number RoHS Certificate of Compliance, [click here](#)

Please visit the [Contact Us](#) section for any non-product compliance questions.

**Search Parts in this Series**

50038Series

**Mates With**

50039

**Use With**

52116

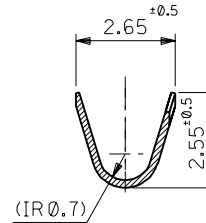
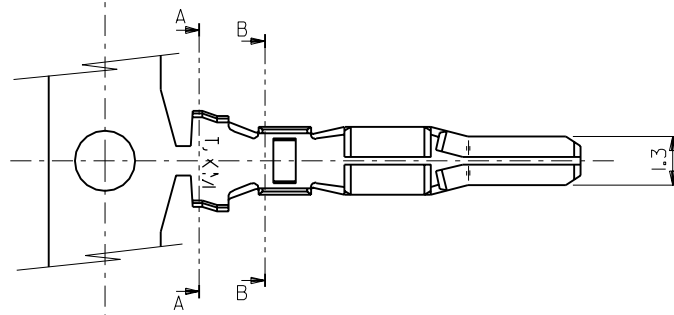
**Application Tooling | FAQ**

*Tooling specifications and manuals are found by selecting the products below. Crimp Height Specifications are then contained in the Application Tooling Specification document.*

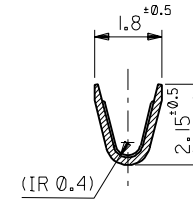
**Japan**

Description	Product #
Hand Crimper	0570865000
Hand Crimper	0570855000

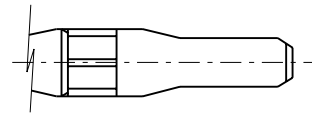
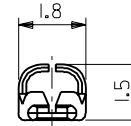
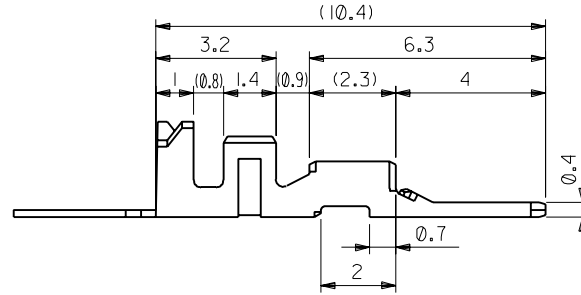
DWG. NO.  
SD-50038-8\*00



断面 A-A  
SECT.A-A



断面 B-B  
SECT.B-B



注記  
NOTICE

- 適合ハウジングアッセンブリ:  
52116-02\*\*  
52116-03\*\*  
52116-04\*\*
- APPLICABLE HOUSING ASSEMBLY:  
52116-02\*\*  
52116-03\*\*  
52116-04\*\*
- 嵌合相手: 50039-8\*00
- MATE: 50039-8\*00

50038-8100	バラ状 LOOSE
50038-8000	連鎖状 CHAIN
ENG NO.	形状 FORM

角度 ANGLE		±3°			材料 MATERIAL リン青銅、錫メッキ PHOSPHER BRONZE PRE-TINNED PLATE		MOLEX JAPAN CO.,LTD. 日本モレックス株式会社
30以上 OVER		±0.3			仕上げ FINISH		
10以上 30未満 OVER UNDER		±0.25			適用電線範囲 WIRE RANGE		TITLE 名称
10未満 UNDER		±0.2			被覆外径 INS. RANGE		2.5 SPLASH PROOF CONN.CRIMP PIN
一般公差 GENERAL TOLERANCES			D	REDRAWN	M.A. M.S.	DRAWN BY 96/06/00 CHK'D BY M.ASAOKA M.SAKANO	DWG. NO. SD-50038-8*00
記号 LTR		変更内容 REVISION RECORD	DR. CHK.	日付 DATE	APP'D BY M.ENOMOTO	尺度 SCALE 8:1	REV D

THIS DRAWING CONTAINS INFORMATION THAT IS PROPRIETARY TO MOLEX(JAPAN) AND SHOULD NOT BE USED WITHOUT WRITTEN PERMISSION  
本図面は日本モレックス(株)の所有する情報を含むもので 当社の許可なく複製を禁止する。

EN-01C(032)MXJ-32

DIMENSIONS IN METRIC DO NOT SCALE DRAWING

50038.S20