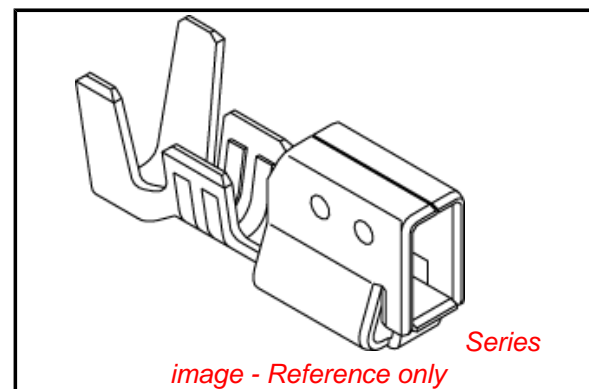


PLEASE CHECK WWW.MOLEX.COM FOR LATEST PART INFORMATION

Part Number: **0502179101**
Status: **Active**
Description: 3.50mm (.138") Pitch Crimp Terminal 50217, 18-24 AWG, Bag, Brass

Documents:

| | |
|--|--|
| 3D Model | Product Specification PS-51067-016 (PDF) |
| Drawing (PDF) | Product Specification PS-51067-017 (PDF) |
| Product Specification PS-51067-001 (PDF) | Product Specification PS-51067-019 (PDF) |
| Product Specification PS-51067-002 (PDF) | Product Specification PS-51067-020 (PDF) |
| Product Specification PS-51067-005 (PDF) | Product Specification PS-51067-021 (PDF) |
| Product Specification PS-51067-007 (PDF) | RoHS Certificate of Compliance (PDF) |
| Product Specification PS-51067-008 (PDF) | |



General

| | |
|-------------------------|-----------------|
| Product Family | Crimp Terminals |
| Series | 50217 |
| Crimp Quality Equipment | Yes |
| Product Name | N/A |

Physical

| | |
|--------------------------------|--------------------------|
| Gender | Female |
| Material - Metal | Brass |
| Material - Plating Mating | Tin |
| Material - Plating Termination | Tin |
| Packaging Type | Bag |
| Plating min: Mating (µm) | 35 |
| Plating min: Mating (µm) | 0.88 |
| Plating min: Termination (µm) | 35 |
| Plating min: Termination (µm) | 0.88 |
| Termination Interface: Style | Crimp or Compression |
| Wire Insulation Diameter | 1.40-3.00mm (.055-.118") |
| Wire Size AWG | 18, 20, 22, 24 |
| Wire Size mm ² | N/A |

Material Info

Reference - Drawing Numbers

| | |
|-----------------------|--|
| Product Specification | PS-51067-001, PS-51067-002, PS-51067-005, PS-51067-007, PS-51067-008, PS-51067-016, PS-51067-017, PS-51067-019, PS-51067-020, PS-51067-021, RPS-35156-002, RPS-35156-003, RPS-35156-101, RPS-51067-002, RPS-51067-003, RPS-51067-015, RPS-51067-020, RPS-51067-021, RPS-51067-022, RPS-51067-023, RPS-51067-025, RPS-51067-028, RPS-51067-031, RPS-51067-032, RPS-51067-035, RPS-51067-037, RPS-51067-040, RPS-51067-041 |
| Sales Drawing | SD-50217-**** |

EU RoHS

ELV and RoHS Compliant
REACH SVHC Contains SVHC: No
Halogen-Free Status

China RoHS



Need more information on product environmental compliance?

Email productcompliance@molex.com
 For a multiple part number RoHS Certificate of Compliance, [click here](#)

Please visit the [Contact Us](#) section for any non-product compliance questions.

Search Parts in this Series

50217Series

Mates With

50419

Use With

51067

Application Tooling | FAQ

Tooling specifications and manuals are found by selecting the products below. Crimp Height Specifications are then contained in the Application Tooling Specification document.

Global

| Description | Product # |
|--|------------|
| Hand Crimp Tool, UL0638118300 Approved | |
| FineAdjust™ Applicator, Small Insulation | 0638603100 |

| | |
|--|-------------------|
| FineAdjust™ Applicator, Large Insulation | <u>0638603000</u> |
|--|-------------------|

Japan

| Description | Product # |
|--------------------------|-------------------|
| Hand Crimper - UL1007 | <u>0571895000</u> |
| Hand Crimper - UL1015 | <u>0571905000</u> |

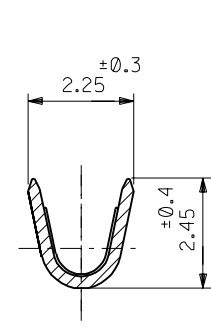
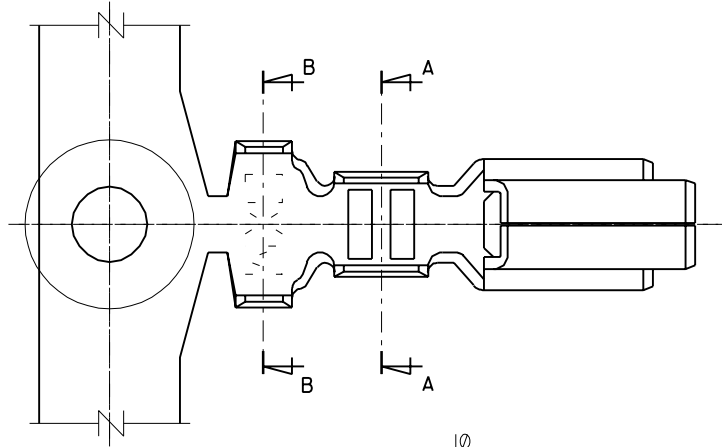
This document was generated on 04/15/2010

PLEASE CHECK WWW.MOLEX.COM FOR LATEST PART INFORMATION

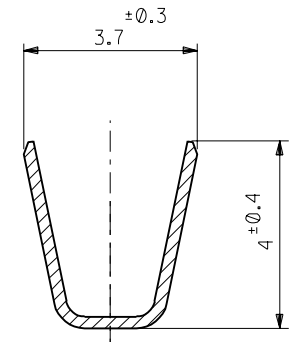
ENG. NO.
SD-50217-****

EDP NO.

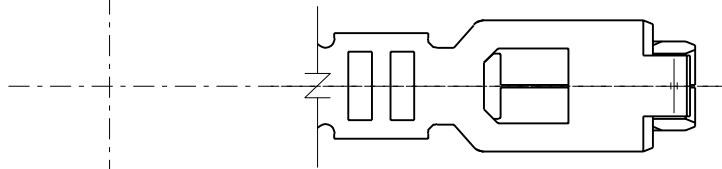
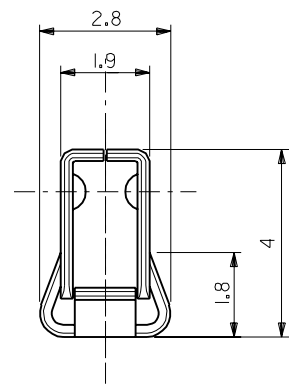
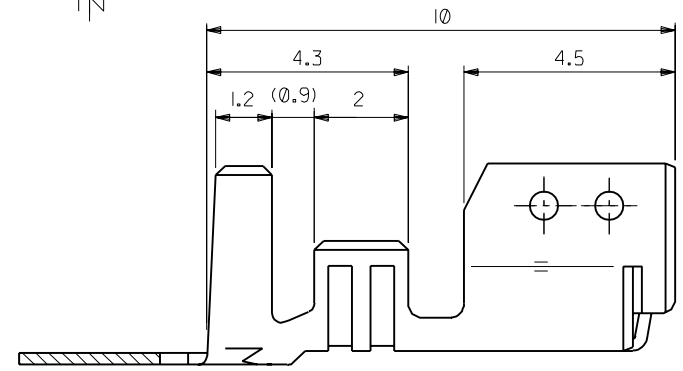
MM DIMENSIONS IN METRIC DO NOT SCALE DRAWING



SECT.A-A



SECT.B-B



注記

1. 適合ハウジング：51067-***00

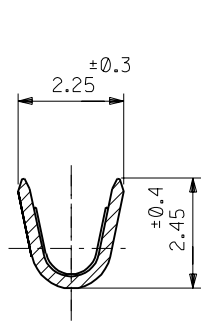
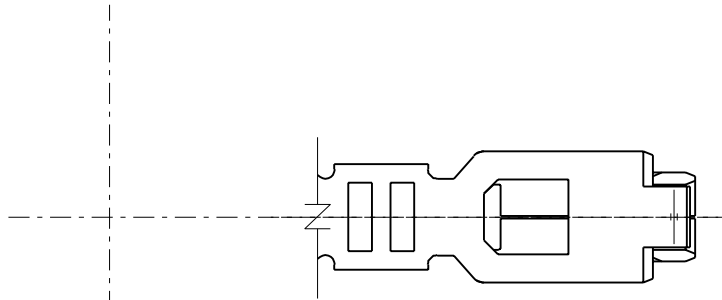
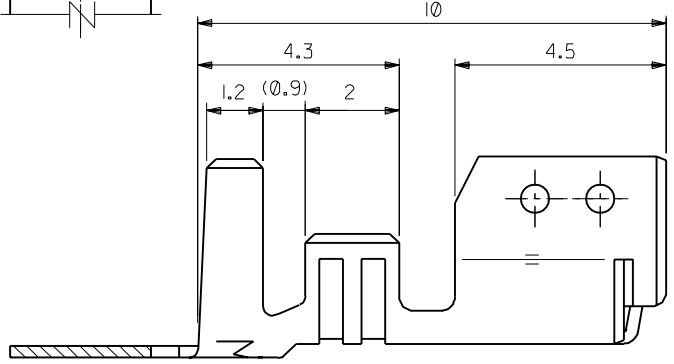
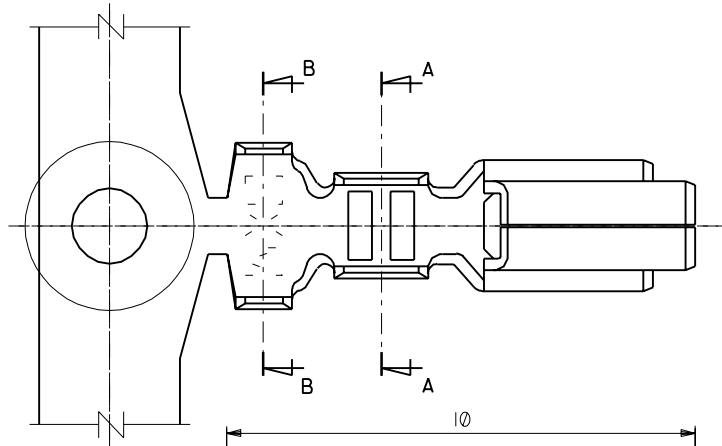
| | | |
|--------------------------|------------|------|
| リン青銅，錫メッキ (+ = 0.254) | 50217-8100 | バラ状 |
| | 50217-8000 | 連鎖状 |
| 黄銅，錫メッキ (+ = 0.254) | 50217-9101 | バラ状 |
| | 50217-9001 | 連鎖状 |
| 材 料 | ENG. NO. | 端子形状 |

| | | | | | | | | | | | | | | | | | | | | | | | | | | | |
|---|-------|-----------------------------|---------------|----------|-----|--|--|-----------|------|---------------|---------|-----------------|-------|-----------------|----------|------------|------|-----------------------------|---------------|-------------------------|--|---------------------------|--|--|--|--|--|
| <table border="1"> <tr> <td>角度 ANGLE</td> <td>±3°</td> <td></td> <td></td> </tr> <tr> <td>30以上 OVER</td> <td>+0.3</td> <td>A 変更 (J00226)</td> <td>90-2-28</td> </tr> <tr> <td>10以上 30未滿 UNDER</td> <td>+0.25</td> <td>0 新規作成 (J91079)</td> <td>89-12-19</td> </tr> <tr> <td>10未滿 UNDER</td> <td>+0.2</td> <td>記号 LTR 変更内容 REVISION RECORD</td> <td>DR. CHK. DATE</td> </tr> <tr> <td>一般公差 GENERAL TOLERANCES</td> <td></td> <td colspan="2">REVISE ONLY ON CAD SYSTEM</td> </tr> </table> | | | | 角度 ANGLE | ±3° | | | 30以上 OVER | +0.3 | A 変更 (J00226) | 90-2-28 | 10以上 30未滿 UNDER | +0.25 | 0 新規作成 (J91079) | 89-12-19 | 10未滿 UNDER | +0.2 | 記号 LTR 変更内容 REVISION RECORD | DR. CHK. DATE | 一般公差 GENERAL TOLERANCES | | REVISE ONLY ON CAD SYSTEM | | 材料 MATERIAL 仕上げ FINISH 適用電線範囲 WIRE RANGE AWG #18 ~ #24 被覆外径 INS. RANGE φ 1.4 ~ φ 3.0 DRAWN BY '89-12-19 K.ASAKAWA APP'D BY '90/11/15 M.ENOMOTO 尺 度 SCALE 1:1 | | MOLEX JAPAN CO., LTD. 日本モレックス株式会社 EDP. NO. ENG. NO. SD-50217-**** TITLE 名称 3.5 WIRE TO BOARD CONN. CRIMP RECEPTACLE | |
| 角度 ANGLE | ±3° | | | | | | | | | | | | | | | | | | | | | | | | | | |
| 30以上 OVER | +0.3 | A 変更 (J00226) | 90-2-28 | | | | | | | | | | | | | | | | | | | | | | | | |
| 10以上 30未滿 UNDER | +0.25 | 0 新規作成 (J91079) | 89-12-19 | | | | | | | | | | | | | | | | | | | | | | | | |
| 10未滿 UNDER | +0.2 | 記号 LTR 変更内容 REVISION RECORD | DR. CHK. DATE | | | | | | | | | | | | | | | | | | | | | | | | |
| 一般公差 GENERAL TOLERANCES | | REVISE ONLY ON CAD SYSTEM | | | | | | | | | | | | | | | | | | | | | | | | | |

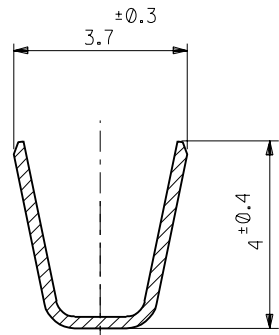
THIS DRAWING CONTAINS INFORMATION THAT IS PROPRIETARY TO MOLEX(JAPAN) AND SHOULD NOT BE USED WITHOUT WRITTEN PERMISSION
 本図面は日本モレックス(株)の所有する情報を含むもので 当社の許可なく複製を禁止する。

ENG. NO. SD-50217-****
EDP NO.

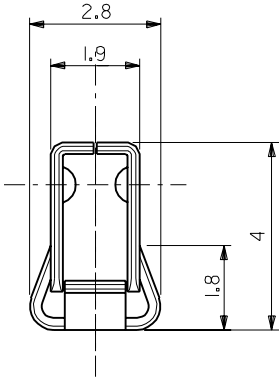
MM DIMENSIONS IN METRIC DO NOT SCALE DRAWING



SECT.A-A



SECT.B-B



NOTES

1. APPLICABLE HOUSING :51067-***0

| | | |
|------------------------------------|------------|-------|
| PHOS. BRO. PRE-TINNED (t=0.254) | 50217-8100 | LOOSE |
| | 50217-8000 | CHAIN |
| BRASS PRE-TINNED (t=0.254) | 50217-9101 | LOOSE |
| | 50217-9001 | CHAIN |
| MATERIAL | ENG. NO. | FORM |

| | |
|----------------------|----------------------|
| 材料 MATERIAL | REFER TO CHART |
| 仕上げ FINISH | — |
| 適用電線範囲 WIRE RANGE | AWG#18~#24 |
| 被覆外径 INS. RANGE | φ 1.4 ~ φ 3.0 |
| DRAWN BY | 90/11/14 S.AIHARA |
| CHK'D BY | 90/11/15 M.FUKUSHIMA |
| APP'D BY | 90/11/15 M.ENOMOTO |
| 尺度 SCALE | — |

molex MOLEX-JAPAN CO.,LTD.
日本モレックス株式会社

EDP. NO.

ENG. NO. SD-50217-****

TITLE 名称
3.5 WIRE TO BOARD CONN.
CRIMP RECEPTACLE

| | |
|-------------------------|-------|
| 角度 ANGLE | ±3° |
| 30以上 OVER | +0.3 |
| 10以上 30未滿 UNDER | +0.25 |
| 10未滿 UNDER | +0.2 |
| 一般公差 GENERAL TOLERANCES | |

REVISION RECORD

| 記号 LTR | 変更内容 REVISION RECORD | DR. CHK. | 日付 DATE |
|--------|----------------------|----------|----------|
| A | REVISED (J01176) | S.A | 90/11/14 |
| 0 | PROPOSED (J91079) | S.A | 89/12/18 |

REVISE ONLY ON CAD SYSTEM

THIS DRAWING CONTAINS INFORMATION THAT IS PROPRIETARY TO MOLEX(JAPAN) AND SHOULD NOT BE USED WITHOUT WRITTEN PERMISSION
本図面は日本モレックス(株)の所有する情報を含むもので 当社の許可なく複製を禁止する。