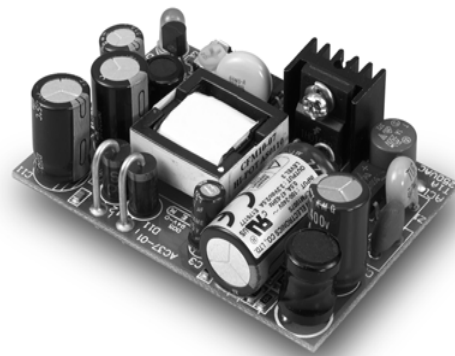




# AC10/15

## 10/15 WATT OPEN FRAME AC-DC MODULES



### Features

- Universal Input 85-264Vac
- Conductive EMI Meets CISPR/FCC Class B
- High Efficiency at 82% Typical
- PCB Mountable

### Specifications

#### INPUT CHARACTERISTICS:

Voltage .....85-264VAC  
 Frequency.....47-63Hz  
 Inrush Current.....20A Max. @ 115Vac  
 40A Max. @ 230Vac  
 Conducted EMI.....CISPR/FCC Class B  
 Isolation .....Input to Output=4,242Vdc  
 Leakage Current.....0.25mA max.

#### ENVIRONMENTAL CHARACTERISTICS:

Operating Temperature .....0°C ~ 40°C  
 Storage Temperature .....-20°C ~ 85°C  
 Cooling.....Free Air Convection

#### OUTPUT CHARACTERISTICS:

Holdup Time.....16mS typ. @ 115Vac  
 Short Circuit Protection.....Continuous  
 Temperature Coefficient.....0.05%/°C

#### MECHANICAL OUTLINE:

Dimensions ..... AC10: 65 x 45 x 23mm (2.56x1.77x0.91Inches)  
 AC15: 69.9 x 48 x 23mm (2.75x1.89x0.91Inches)  
 Weight ..... AC10: 60g  
 AC15: 80g

Typical at 25°C, nominal line and 75% load, unless otherwise Specified

### 10 Watt Series

MODEL	OUTPUT VOLTAGE	MAX. LOAD	MIN. LOAD	RIPPLE & NOISE	VOLTAGE ACCURACY	LINE REGULATION	LOAD REGULATION	EFF %
AC1001S	5 V	2000mA	0A	1%	±1%	±0.5%	±1%	70
AC1002S	12 V	840mA	0A	1%	±1%	±0.5%	±1%	75
AC1003S	15 V	670mA	0A	1%	±1%	±0.5%	±1%	75
AC1005S	24 V	420mA	0A	1%	±1%	±0.5%	±1%	78
AC1007S	3.3 V	2500mA	0A	50mV	±1%	±0.5%	±1%	65
AC1009S	9 V	1120mA	0A	1%	±1%	±0.5%	±1%	72

### 15 Watt Series

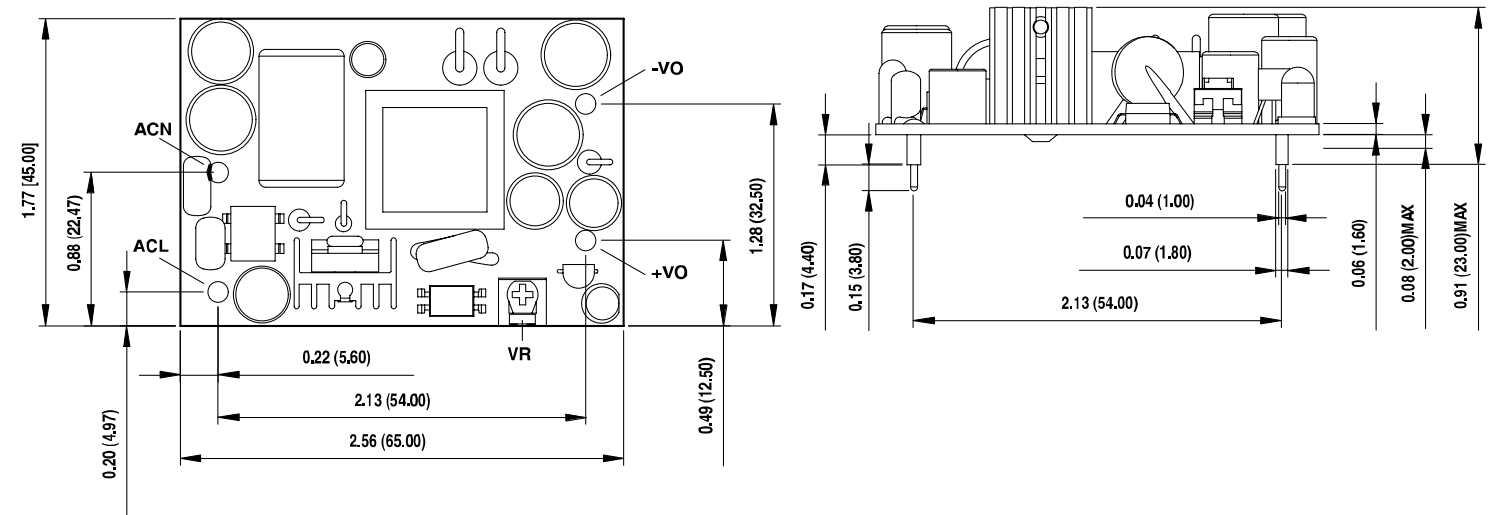
MODEL	OUTPUT VOLTAGE	MAX. LOAD	MIN. LOAD	RIPPLE & NOISE	VOLTAGE ACCURACY	LINE REGULATION	LOAD REGULATION	EFF %
AC1501S	5 V	3000mA	0A	1%	±1%	±0.5%	±1%	73
AC1502S	12 V	1250mA	0A	1%	±1%	±0.5%	±1%	80
AC1503S	15 V	1000mA	0A	1%	±1%	±0.5%	±1%	80
AC1505S	24 V	630mA	0A	1%	±1%	±0.5%	±1%	82
AC1507S	3.3 V	3000mA	0A	50mV	±1%	±0.5%	±1%	70
AC1509S	9 V	1670mA	0A	1%	±1%	±0.5%	±1%	75

#### NOTE:

1. Add a 0.1µF ceramic capacitor and a 10µF E.L. capacitor to output for Ripple & Noise Measuring @ 20MHz BW.
2. Line Regulation is Measured from High Line to Low Line with Full Load.
3. Load Regulation is Measured from Full to 10% Load.

### 10 Watt Series

All Dimensions are In Inches(mm)  
 Tolerances: .xx±.02(.xx±.5) unless otherwise noted



### 15 Watt Series

