

PLEASE CHECK WWW.MOLEX.COM FOR LATEST PART INFORMATION

Part Number: [0473093751](#)
Status: **Active**
Description: 1.10mm (.043") Pitch microSD Card Header, with Detect Switch, Height 3.75mm (.148"), Lead free

Documents:

[3D Model](#) [Product Specification PS-47309-001 \(PDF\)](#)
[Drawing \(PDF\)](#) [RoHS Certificate of Compliance \(PDF\)](#)

General

Product Family	Memory Card Sockets
Series	47309
Button Type	Push-Pull
Comments	Push-Pull Type
Component Type	I/O Header (Card)
Product Name	microSD Card, TransFlash
Type	N/A

Physical

Card Detection Switch	Yes
Circuits (Loaded)	8
Circuits (maximum)	8
Color - Resin	Black
Durability (mating cycles max)	10,000
Ejector Button Side	No Ejector Button Present
Entry Angle	90° Angle
Keying to Mating Part	Yes
Material - Metal	Phosphor Bronze
Material - Plating Mating	Gold
Material - Plating Termination	Gold
Material - Resin	High Temperature Thermoplastic
PCB Locator	No
PCB Mounting Side	Reverse
PCB Retention	Yes
Packaging Type	Embossed Tape on Reel
Pitch - Mating Interface (in)	0.043 In
Pitch - Mating Interface (mm)	1.10 mm
Pitch - Term. Interface (in)	0.043 In
Pitch - Term. Interface (mm)	1.10 mm
Plating min: Mating (µin)	29.5
Plating min: Mating (µm)	0.75
Plating min: Termination (µin)	2
Plating min: Termination (µm)	0.05
Ports	1
Temperature Range - Operating	-40°C to +85°C
Termination Interface: Style	Surface Mount

Electrical

Current - Maximum per Contact	0.5A
Shielded	Yes
Voltage - Maximum	5V

Solder Process Data

Duration at Max. Process Temperature (seconds)	10
Lead-free Process Capability	Reflow Capable (SMT only)
Max. Cycles at Max. Process Temperature	2

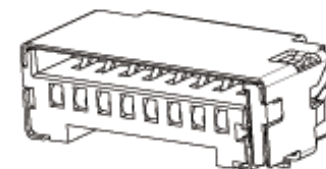


image - Reference only *Series*

EU RoHS

**ELV and RoHS
Compliant**
REACH SVHC
 Not Reviewed
**Halogen-Free
Status**

China RoHS



**Need more information on product
environmental compliance?**

Email productcompliance@molex.com
 For a multiple part number RoHS Certificate of
 Compliance, [click here](#)

Please visit the [Contact Us](#) section for any
 non-product compliance questions.

Search Parts in this Series

[47309Series](#)

Mates With

Standard SIM Card

Use With

microSD Card

Process Temperature max. C 255

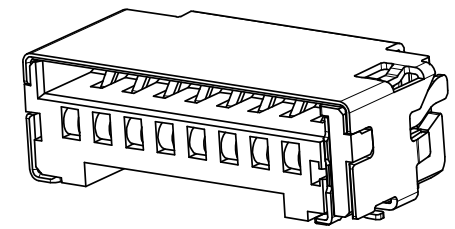
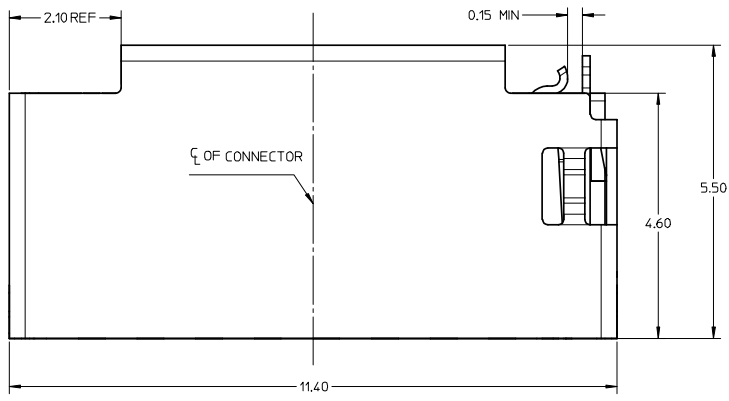
Material Info

Reference - Drawing Numbers

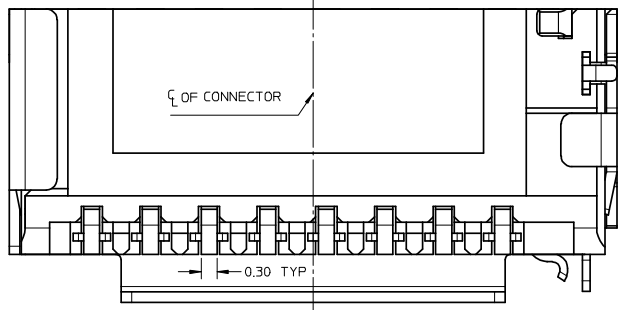
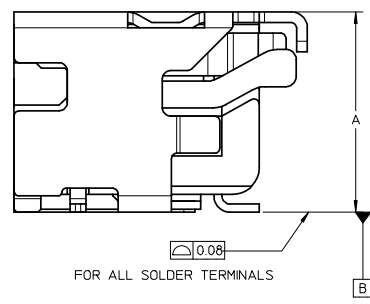
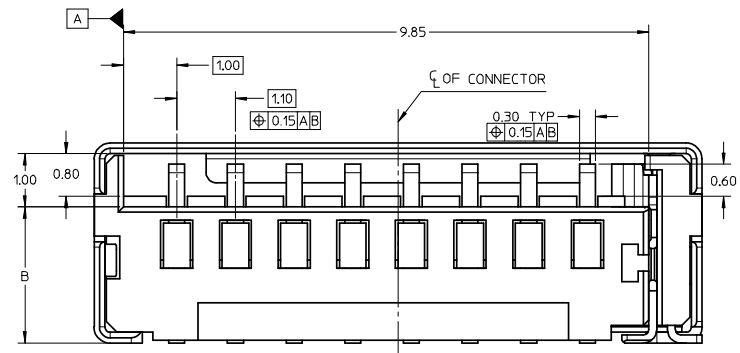
Product Specification PS-47309-001
Sales Drawing SD-47309-001

This document was generated on 03/31/2010

PLEASE CHECK WWW.MOLEX.COM FOR LATEST PART INFORMATION



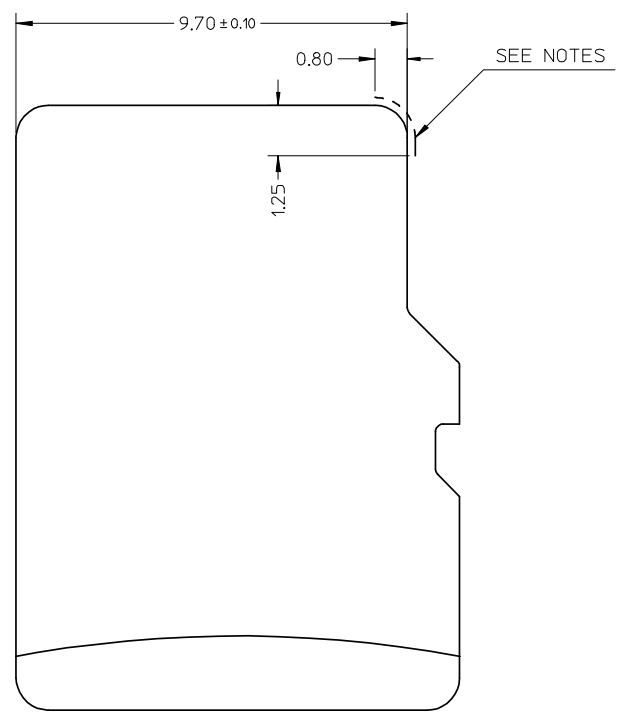
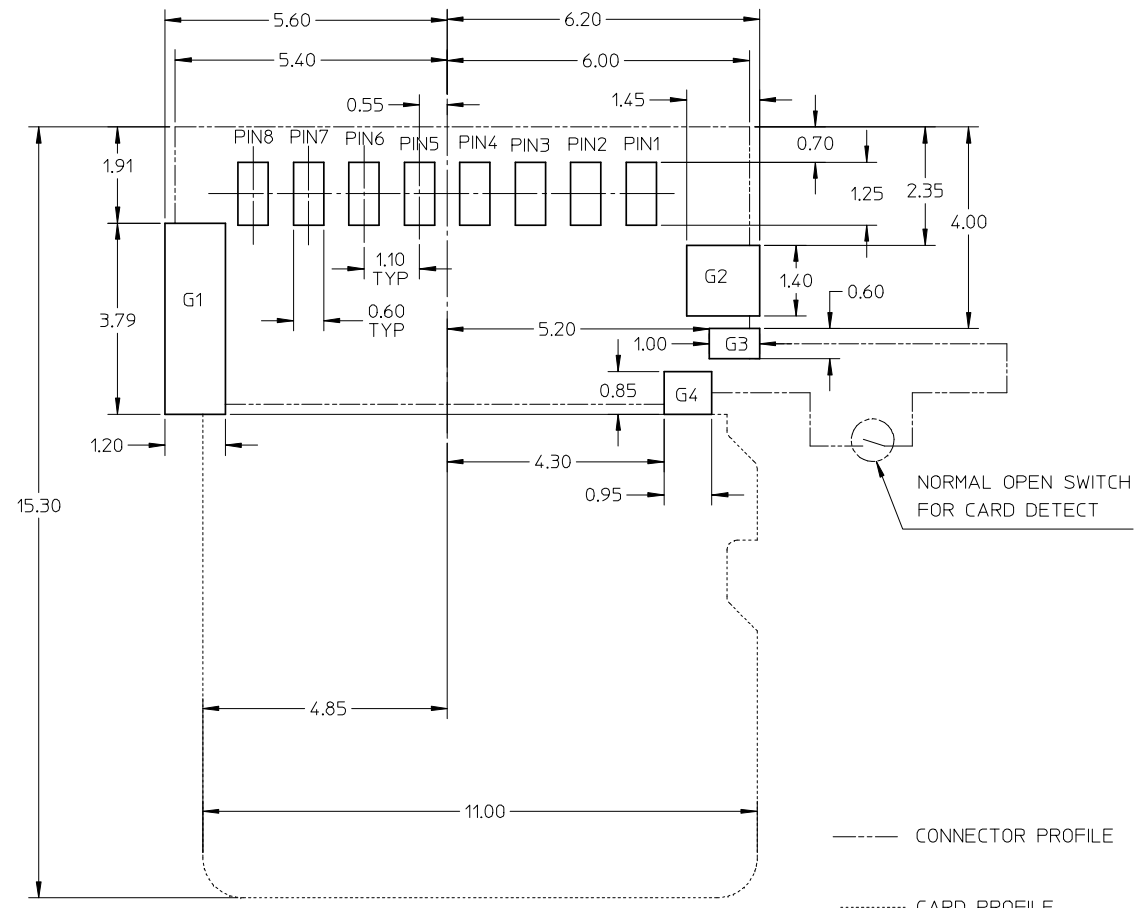
NOTE:
 1 MATERIAL:
 1-1 HOUSING : LCP, 30% G/F, UL 94V-0, BLACK
 1-2 SIGNAL TERMINAL AND DETECT TERMINAL : PHOSPHOR BRONZE
 1-3 METAL SHELL : STAINLESS STEEL
 2 FINISH:
 2-1 SIGNAL TERMINAL : 1.25-6.25 MICRON NICKEL MIN UNDER-PLATED,
 0.75-1.25 MICRON GOLD MIN ON CONTACT AREA, GOLD FLASH PLATED ON SOLDER AREA
 2-2 METAL SHELL : GOLD FLASH PLATED OVER NICKEL ON SOLDER AREA
 2-3 DETECT PIN : 1.25-6.25 MICRON NICKEL MIN UNDER-PLATED
 GOLD FLASH PLATED ON CONTACT AREA, TIN PLATED ON SOLDER AREA
 3 PRODUCT SPECIFICATION: PS-47309-001.



473093751	3.75	2.55
473093551	3.55	2.35
473093351	3.35	2.15
473092851	2.85	1.65
473092651	2.65	1.45
PART NUMBER	DIMENSION A	DIMENSION B

REVISION EC NO: SFA20080393599 DRWN: LLIU10 2008/02/22 CHKD: YLZH02 2008/03/11 APPR: HWANG 2008/04/02	QUALITY SYMBOLS	GENERAL TOLERANCES (UNLESS SPECIFIED)	DIMENSION STYLE	SCALE	DESIGN UNITS	THIRD ANGLE PROJECTION																					
	$\nabla=0$ $\nabla=0$	<table border="1"> <tr> <td></td> <td>mm</td> <td>INCH</td> </tr> <tr> <td>4 PLACES</td> <td>±---</td> <td>±---</td> </tr> <tr> <td>3 PLACES</td> <td>±---</td> <td>±---</td> </tr> <tr> <td>2 PLACES</td> <td>±0.15</td> <td>±---</td> </tr> <tr> <td>1 PLACE</td> <td>±0.25</td> <td>±---</td> </tr> </table>		mm	INCH		4 PLACES	±---	±---	3 PLACES	±---	±---	2 PLACES	±0.15	±---	1 PLACE	±0.25	±---	MM ONLY	15:1	METRIC						
		mm	INCH																								
	4 PLACES	±---	±---																								
3 PLACES	±---	±---																									
2 PLACES	±0.15	±---																									
1 PLACE	±0.25	±---																									
DESCRIPTION	DRAFT WHERE APPLICABLE MUST REMAIN WITHIN DIMENSIONS	<table border="1"> <tr> <td>DRAWN BY</td> <td>DATE</td> <td>TITLE</td> </tr> <tr> <td>XIXU</td> <td>2005/12/24</td> <td>TFR HEADER W/DETECT PIN</td> </tr> <tr> <td>CHECKED BY</td> <td>DATE</td> <td></td> </tr> <tr> <td>YJWU</td> <td>2005/12/24</td> <td></td> </tr> <tr> <td>APPROVED BY</td> <td>DATE</td> <td></td> </tr> <tr> <td>YJWU</td> <td>2005/12/24</td> <td></td> </tr> </table>	DRAWN BY	DATE	TITLE	XIXU	2005/12/24	TFR HEADER W/DETECT PIN	CHECKED BY	DATE		YJWU	2005/12/24		APPROVED BY	DATE		YJWU	2005/12/24		<table border="1"> <tr> <td>MATERIAL NO.</td> <td>DOCUMENT NO.</td> <td>SHEET NO.</td> </tr> <tr> <td>SEE TABLE</td> <td>SD-47309-001</td> <td>1 OF 2</td> </tr> </table>	MATERIAL NO.	DOCUMENT NO.	SHEET NO.	SEE TABLE	SD-47309-001	1 OF 2
DRAWN BY	DATE	TITLE																									
XIXU	2005/12/24	TFR HEADER W/DETECT PIN																									
CHECKED BY	DATE																										
YJWU	2005/12/24																										
APPROVED BY	DATE																										
YJWU	2005/12/24																										
MATERIAL NO.	DOCUMENT NO.	SHEET NO.																									
SEE TABLE	SD-47309-001	1 OF 2																									
REV			SIZE	THIS DRAWING CONTAINS INFORMATION THAT IS PROPRIETARY TO MOLEX INCORPORATED AND SHOULD NOT BE USED WITHOUT WRITTEN PERMISSION																							

10 9 8 7 6 5 4 3 2 1



----- CONNECTOR PROFILE
 CARD PROFILE

TRF CARD

G4	DET
G3	POL
G2	GND
G1	GND
P8	DAT1
P7	DAT0
P6	VSS
P5	CLK
P4	VDD
P3	CMD
P2	CD/DAT3
P1	DAT2
PIN NUMBER	PIN NUMBER

RECOMMENDED PCB LAYOUT
 TOLERANCE FOR PCB LAYOUT : ±0.05

NOTES:

NO CONDUCTIVE EXPOSURE TRACE IS ALLOWED ON THE SIDE FACE OF THE CARD AT THIS AREA.

9 8 7 6 5 4 3 2 1

REVISION EC NO: SH20080309399 DRW: LUT10 2008/02/22 CHKD: YLZHU02 2008/03/11 APPR: HWANG 2008/04/02	QUALITY SYMBOLS 	GENERAL TOLERANCES (UNLESS SPECIFIED)		DIMENSION STYLE MM ONLY	SCALE 15:1	DESIGN UNITS METRIC	THIRD ANGLE PROJECTION	
		4 PLACES ± --- ± --- 3 PLACES ± --- ± --- 2 PLACES ± 0.15 ± --- 1 PLACE ± 0.25 ± ---	mm INCH DRAWN BY: XIXU DATE: 2005/12/24 CHECKED BY: YJWU DATE: 2005/12/24 APPROVED BY: YJWU DATE: 2005/12/24	TITLE TFR HEADER W/DETECT PIN				
		ANGULAR ± 1 °		MATERIAL NO. SEE TABLE		DOCUMENT NO. SD-47309-001		SHEET NO. 2 OF 2
		DRAFT WHERE APPLICABLE MUST REMAIN WITHIN DIMENSIONS		THIS DRAWING CONTAINS INFORMATION THAT IS PROPRIETARY TO MOLEX INCORPORATED AND SHOULD NOT BE USED WITHOUT WRITTEN PERMISSION				