

PLEASE CHECK WWW.MOLEX.COM FOR LATEST PART INFORMATION

Part Number: [0192110004](#)
Status: **Active**
Overview: [wire_pins](#)
Description: Krimptite™ Wire Pin Terminal for 22-18 AWG Wire, Mylar Tape Carrier

Documents:

[Drawing \(PDF\)](#) [RoHS Certificate of Compliance \(PDF\)](#)

Agency Certification

CSA LR18689
 UL E32244

General

Product Family Crimp Terminals
 Series [19211](#)
 Comments Pin Length 9.91mm (.390")
 Crimp Quality Equipment Yes
 Overview [wire_pins](#)
 Product Name Wire Pin

Physical

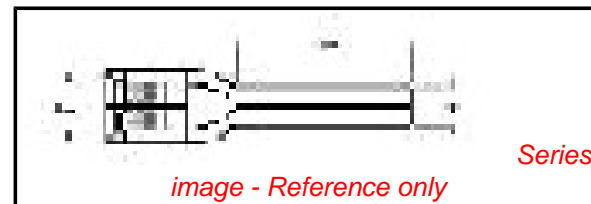
Gender Male
 Material - Metal Copper
 Material - Plating Mating Tin
 Material - Plating Termination Tin
 Packaging Type Adhesive Tape on Reel
 Plating min: Mating (µin) 30
 Plating min: Mating (µm) 0.75
 Plating min: Termination (µin) 30
 Plating min: Termination (µm) 0.75
 Termination Interface: Style Crimp or Compression
 Wire Insulation Diameter 1.52mm (.060") max.
 Wire Size AWG 18, 19, 20, 22
 Wire Size mm² 22 TO 18

Material Info

Old Part Number WP-1218T

Reference - Drawing Numbers

Sales Drawing SD-19211-002



EU RoHS

ELV and RoHS Compliant

REACH SVHC

Not Reviewed

Halogen-Free

Status

Not Reviewed

China RoHS



Need more information on product environmental compliance?

Email productcompliance@molex.com
 For a multiple part number RoHS Certificate of Compliance, [click here](#)

Please visit the [Contact Us](#) section for any non-product compliance questions.

Search Parts in this Series

[19211Series](#)

Application Tooling | FAQ

Tooling specifications and manuals are found by selecting the products below. Crimp Height Specifications are then contained in the Application Tooling Specification document.

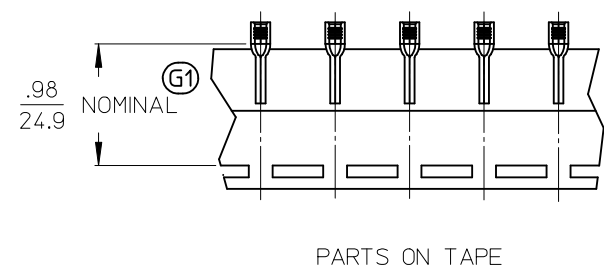
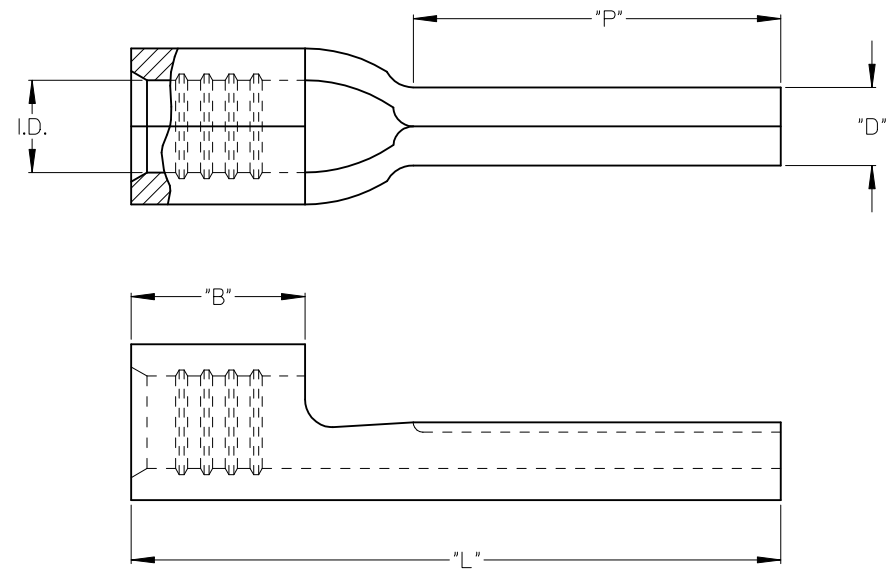
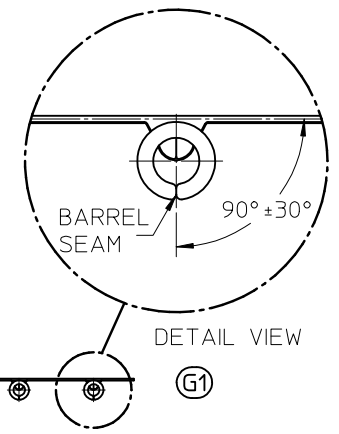
Global

Description	Product #
Mini-Mac™ Applicator	0638853800
ATP Tooling Kit for ATP-100 and ATP-300 Series Air Crimping Press for Mylar Tape Mounted Terminals	0190270034

MATERIAL NO. LOOSE PIECE	ENGINEERING NO. LOOSE PIECE	MATERIAL NO. TAPE MOUNTED	ENGINEERING NO. TAPE MOUNTED	AWG	"I.D." MIN	"B" MIN	"L" MAX	"P" MIN	"D" ± $\frac{.01}{0.3}$
192110003	WP-1218	192110004	WP-1218T	22-18	.058/1.47	.165/ 4.19	.68/ 17.3	.35/ 8.9	.078/ 1.98
192110005	WP-1614	192110006	WP-1614T	16-14	.081/2.06	.165/ 4.19	.68/ 17.3	.35/ 8.9	.078/ 1.98
192110001	WP-1210	192110002	WP-1210T	12-10	.128/3.25	.230/ 5.84	.82/ 20.8	.41/ 10.4	.107/ 2.72

G1

G1 G1 G1 G1



SALES DRAWING

- NOTES:
- MATERIAL: COPPER
 - FINISH: ELECTRO-TIN PLATING
 - PARTS ARE ROHS COMPLIANT.

G1

CORRECTED, ROT SPEC EC NO: G1 DRAWN: ETHRODAHL CHKD: JMACNEIL APPR:	DESCRIPTION 2009/01/16 2010/03/01	QUALITY SYMBOLS	GENERAL TOLERANCES (UNLESS SPECIFIED)	DIMENSION STYLE	SCALE	DESIGN UNITS	THIRD ANGLE PROJECTION																																
		$\nabla=0$ $\nabla=0$	<table border="1"> <thead> <tr> <th></th> <th>mm</th> <th>INCH</th> </tr> </thead> <tbody> <tr> <td>4 PLACES</td> <td>± ---</td> <td>± ---</td> </tr> <tr> <td>3 PLACES</td> <td>± ---</td> <td>± ---</td> </tr> <tr> <td>2 PLACES</td> <td>± ---</td> <td>± ---</td> </tr> <tr> <td>1 PLACE</td> <td>± ---</td> <td>± ---</td> </tr> <tr> <td colspan="3">ANGULAR ± ---°</td> </tr> </tbody> </table>		mm	INCH	4 PLACES	± ---	± ---	3 PLACES	± ---	± ---	2 PLACES	± ---	± ---	1 PLACE	± ---	± ---	ANGULAR ± ---°			<table border="1"> <thead> <tr> <th>IN/MM</th> <th>DATE</th> </tr> </thead> <tbody> <tr> <td>DRAWN BY</td> <td>B. ENDERLE</td> </tr> <tr> <td>DATE</td> <td>02/14/02</td> </tr> <tr> <td>CHECKED BY</td> <td>H. BIETZEL</td> </tr> <tr> <td>DATE</td> <td>02/14/02</td> </tr> <tr> <td>APPROVED BY</td> <td>R. DEROSS</td> </tr> <tr> <td>DATE</td> <td>02/14/02</td> </tr> </tbody> </table>	IN/MM	DATE	DRAWN BY	B. ENDERLE	DATE	02/14/02	CHECKED BY	H. BIETZEL	DATE	02/14/02	APPROVED BY	R. DEROSS	DATE	02/14/02	INCH	INCH	
			mm	INCH																																			
		4 PLACES	± ---	± ---																																			
3 PLACES	± ---	± ---																																					
2 PLACES	± ---	± ---																																					
1 PLACE	± ---	± ---																																					
ANGULAR ± ---°																																							
IN/MM	DATE																																						
DRAWN BY	B. ENDERLE																																						
DATE	02/14/02																																						
CHECKED BY	H. BIETZEL																																						
DATE	02/14/02																																						
APPROVED BY	R. DEROSS																																						
DATE	02/14/02																																						
DRAFT WHERE APPLICABLE MUST REMAIN WITHIN DIMENSIONS				MATERIAL NO. SEE CHART	DOCUMENT NO. SD-19211-002	TITLE KRIMPTITE WIRE PIN TERMINALS 22-18, 16-14, 12-10 AWG	SHEET NO. 1 OF 1																																
THIS DRAWING CONTAINS INFORMATION THAT IS PROPRIETARY TO MOLEX INCORPORATED AND SHOULD NOT BE USED WITHOUT WRITTEN PERMISSION																																							