

PLEASE CHECK WWW.MOLEX.COM FOR LATEST PART INFORMATION

Part Number: [0358179290](#)
Status: **Active**
Description: 14.50mm (.570") Pitch MP-Lock™ Housing, 2 Circuits, for 4.75mm (.817") Tab, PP Polypropylene, White

Documents:

[Drawing \(PDF\)](#) [RoHS Certificate of Compliance \(PDF\)](#)
[Product Specification PS-35817-001 \(PDF\)](#)

General

Product Family	Crimp Housings
Series	35817
Product Name	MP-Lock™

Physical

Circuits (maximum)	2
Gender	Female
Glow-Wire Compliant	No
Lock to Mating Part	None
Number of Rows	1
Packaging Type	Bag
Panel Mount	No
Pitch - Mating Interface (in)	0.484 In
Pitch - Mating Interface (mm)	12.30 mm
Stackable	Yes
Temperature Range - Operating	-40°C to +120°C

Electrical

Current - Maximum per Contact	12A
-------------------------------	-----

Material Info

Reference - Drawing Numbers

Product Specification	PS-35817-001
Sales Drawing	SD-35817-001

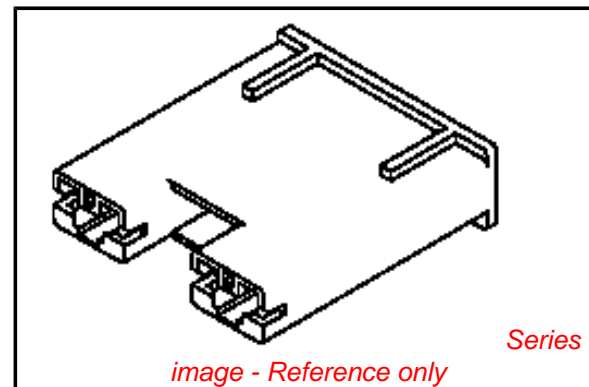


image - Reference only

EU RoHS

ELV and RoHS Compliant
REACH SVHC
 Not Reviewed
Halogen-Free
Status
Not Reviewed

China RoHS



Need more information on product environmental compliance?

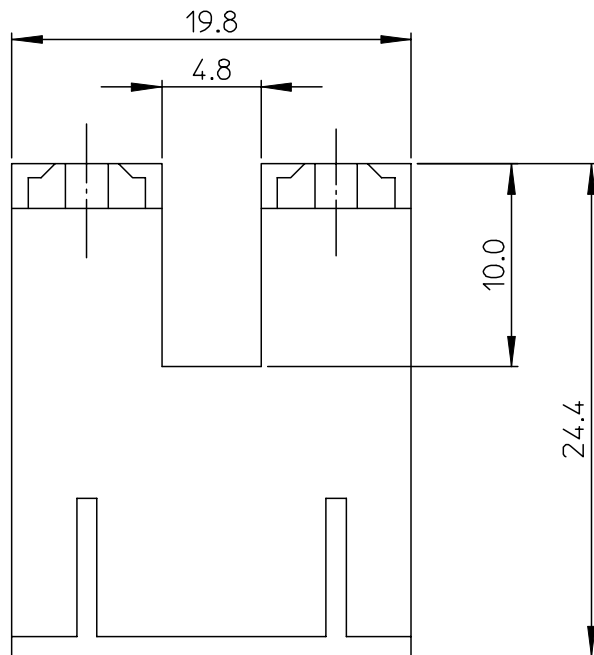
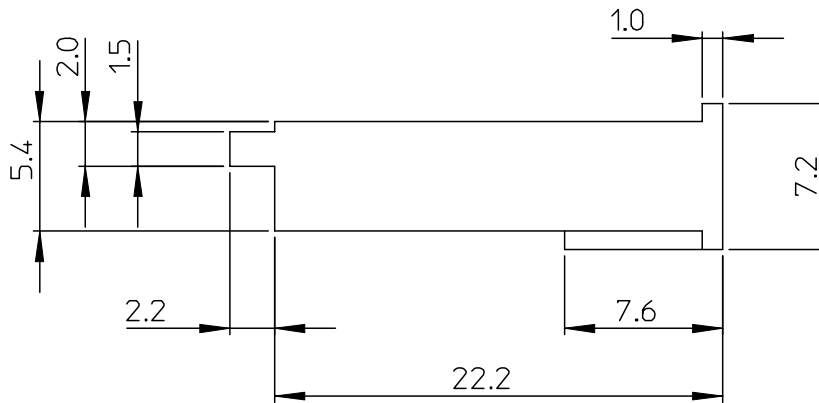
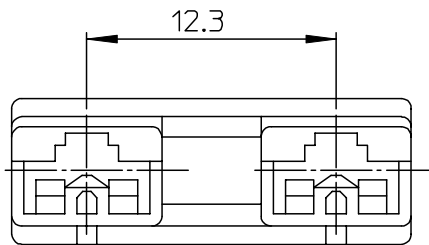
Email productcompliance@molex.com
 For a multiple part number RoHS Certificate of Compliance, [click here](#)

Please visit the [Contact Us](#) section for any non-product compliance questions.

Search Parts in this Series
[35817Series](#)

Mates With
 Appliance Timer|Temperature Switch|
 Appliance Capacitor|Appliance Heater

Use With
[35068](#) Female Terminal



NOTES

1. MATERIAL

ENG NO.	MATERIAL	COLOR
35817-0280	NYLON	NATURAL (WHITE)
35817-0290	POLYESTER(PBT)	
35817-9290	PBT/PC	

2. APPLICABLE TERMINAL : 35068-9702/9802/9902

DO NOT SCALE DRAWING
DIMENSION IN METRIC

DWG. NO.
SD-35817-001

SIMILAR ITEM

PROJECT NO.

B

C

V

REVISED	ECN NO. KOR 2007-0006 DRWN: J.B.JIN 06/06/09 CHK: W.Y.YANG APPR: S.H.CHOI
B	DESCRIPTION

QUALITY SYMBOLS	MAJOR = 0
	CRITICAL = 0
REV	DESCRIPTION

GENERAL TOLERANCES: (UNLESS SPECIFIED)	
4 PLACES	±0.
3 PLACES	±0.
2 PLACES	±0.30
1 PLACE	±0.30
ANGULAR: ± °	
DRAFT WHERE APPLICABLE MUST REMAIN WITHIN DIMENSIONS	

SCALE 4:1	DESIGN UNITS <input checked="" type="checkbox"/> mm <input type="checkbox"/> INCH
DRAWN BY & DATE W.Y.YANG 98/07/29	
CHECKED BY & DATE B.K.CHOI 98/07/29	
APPROVED BY & DATE C.W.LEE 98/07/29	
CAD FILENAME S35817AA.MI	MATERIAL NO. SEE TABLE

DIMENSIONS: <input type="checkbox"/> mm <input type="checkbox"/> INCH <input checked="" type="checkbox"/> mm ONLY		SHT	REV
THIRD ANGLE PROJECTION		REVISE ON CAD ONLY	
TITLE: .187 MP-LOCK HOUSING-2P (CAPACITOR)			
MOLEX INCORPORATED			
DRAWING NO. SD-35817-001	SHEET NO. 1 OF 1	KOREA	
THIS DRAWING CONTAINS INFORMATION THAT IS PROPRIETARY TO MOLEX INCORPORATED AND SHOULD NOT BE USED WITHOUT WRITTEN PERMISSION.			SIZE B

F
E
D
C
B
A