



TAI-SAW TECHNOLOGY CO., LTD.

No. 3, Industrial 2nd Rd., Ping-Chen Industrial District,
Taoyuan, 324, Taiwan, R.O.C.

TEL: 886-3-4690038 FAX: 886-3-4697532

E-mail: tstsales@mail.taisaw.com Web: www.taisaw.com

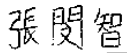
Product Specifications Approval Sheet


Product Description: SAW Filter 109 MHz SMD 9.1x7.1 mm

TST Part No.: TB0768A

Customer Part No.: _____

Customer signature required
Company: _____
Division: _____
Approved by : _____
Date: _____

Checked by: _____ David Chang 

Approved by: _____ Francis Chen 

Date: _____ 2009/06/04

1. Customer signed back is required before TST can proceed with sample build and receive orders.
2. Orders received without customer signed back will be regarded as agreement on the specifications.
3. Any specifications changes must be approved upon by both parties and a new revision of specifications shall be released to reflect the changes.



TAI-SAW TECHNOLOGY CO., LTD.

No. 3, Industrial 2nd Rd., Ping-Chen Industrial District,
Taoyuan, 324, Taiwan, R.O.C.

TEL: 886-3-4690038 FAX: 886-3-4697532

E-mail: tstsales@mail.taisaw.com Web: www.taisaw.com

SAW Filter 109 MHz

MODEL NO.:TB0768A

REV. NO.:1

A. MAXIMUM RATING:

1. Input Power Level: 10 dBm
2. DC Voltage : 5V
3. Operating Temperature: -20°C to 70°C
4. Storage Temperature: -40°C to 85°C

RoHS Compliant
Lead free
Lead-free soldering

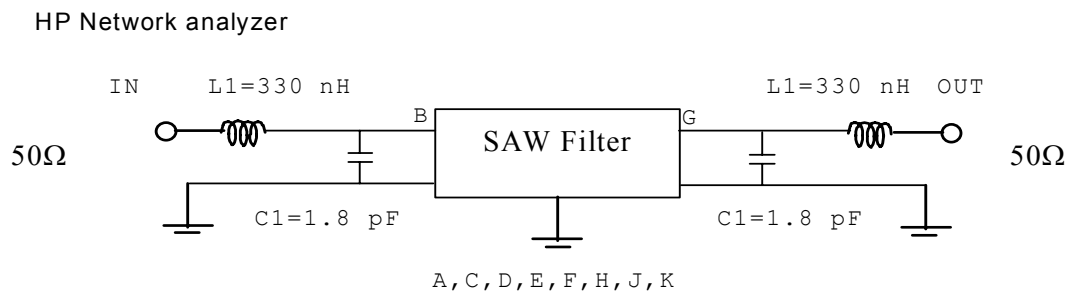
B. ELECTRICAL CHARACTERISTICS:

Item	Unit	Min.	Type.	Max.
Center frequency	Fc MHz	-	109	-
Minimum Insertion Loss (Fc ±17.5KHz)	IL dB	-	2.4	6
3 dB bandwidth	BW₃ KHz	35	72	-
Passband Ripple (Fc ±17.5KHz)		-	0.7	3
Group delay ripple (Fc ±17.5KHz)	GD μs	-	4	12
Relative Attenuation				
Fc ±200 KHz		50	64	-
Fc ±500 KHz		40	55	-
Temperature coefficient of frequency	TCf	-0.036 ppm/K ²		

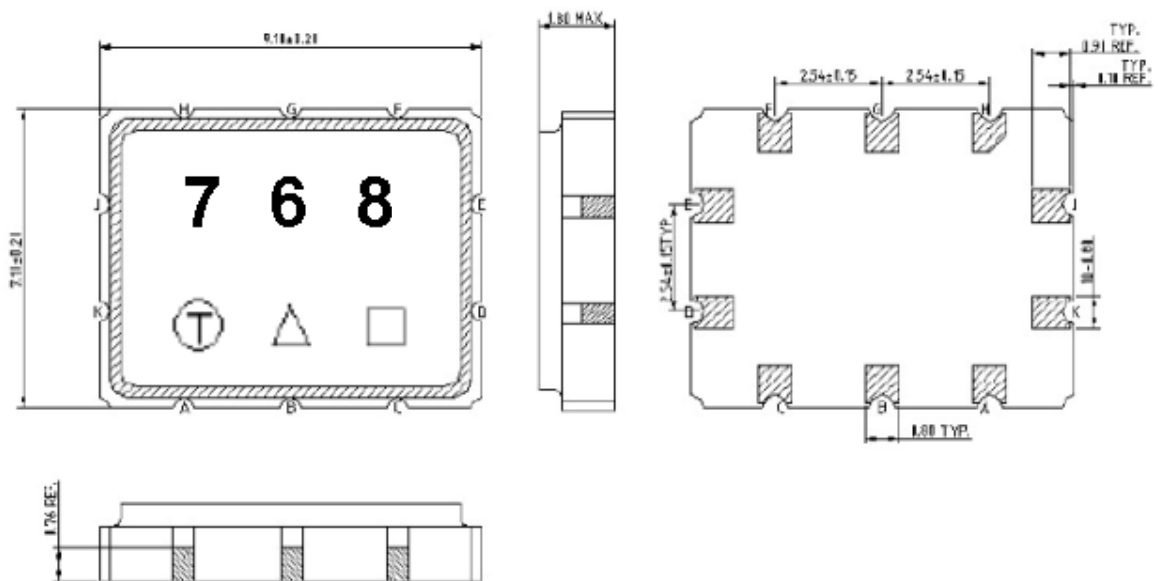
Note: Considering -8 KHz frequency shift from -20°C to +70°C

C. MEASUREMENT CIRCUIT:

50 Ohm Test circuit (single-ended / single-ended)



D. OUTLINE DRAWING:



Pin configuration

#B Input / Output

#G Output / Input

#A,C,D,E,F,H,J,K To be grounded

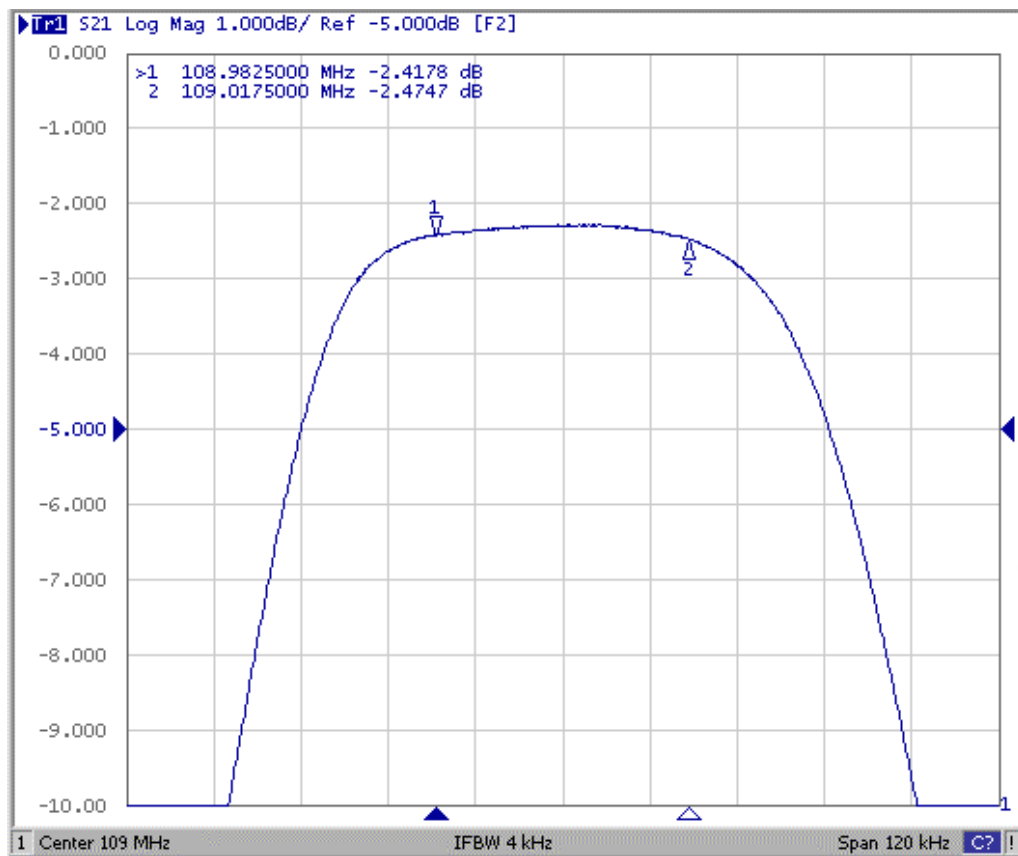
Unit : mm

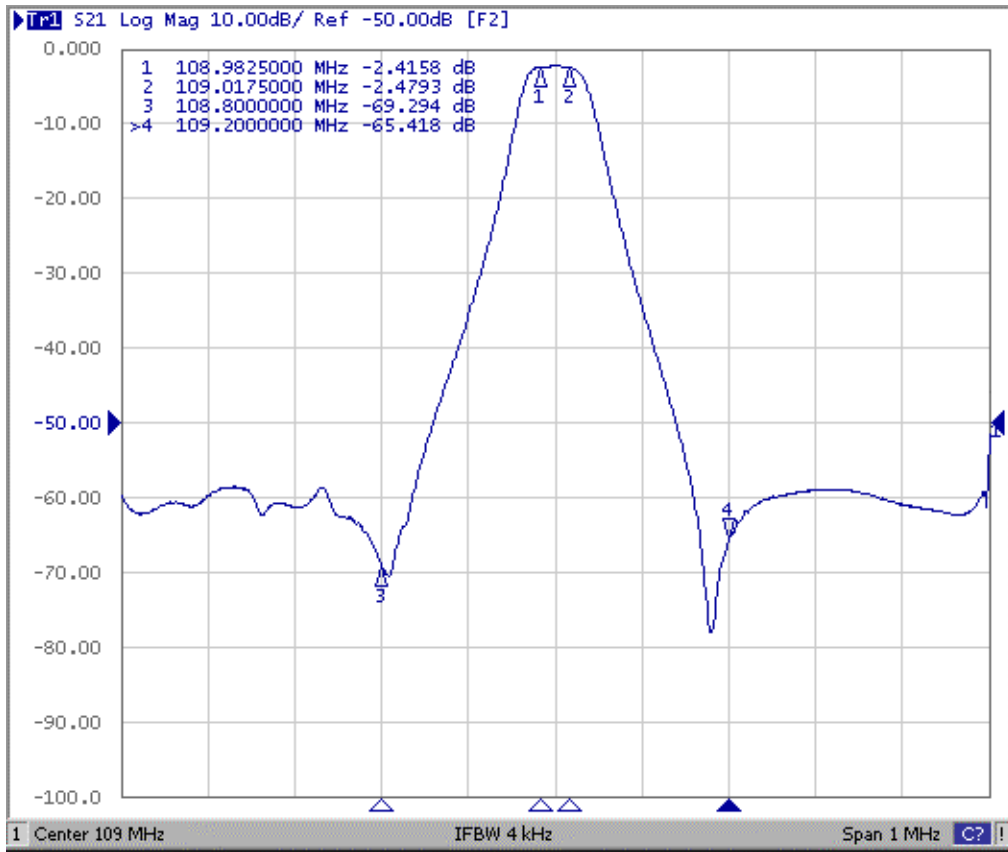
□ : Week Code (Follow the table from planner each year)

△ : Product / Year Code

Year	2005 2009	2006 2010	2007 2011	2008 2012
Product Code	B	b	<u>B</u>	<u>b</u>

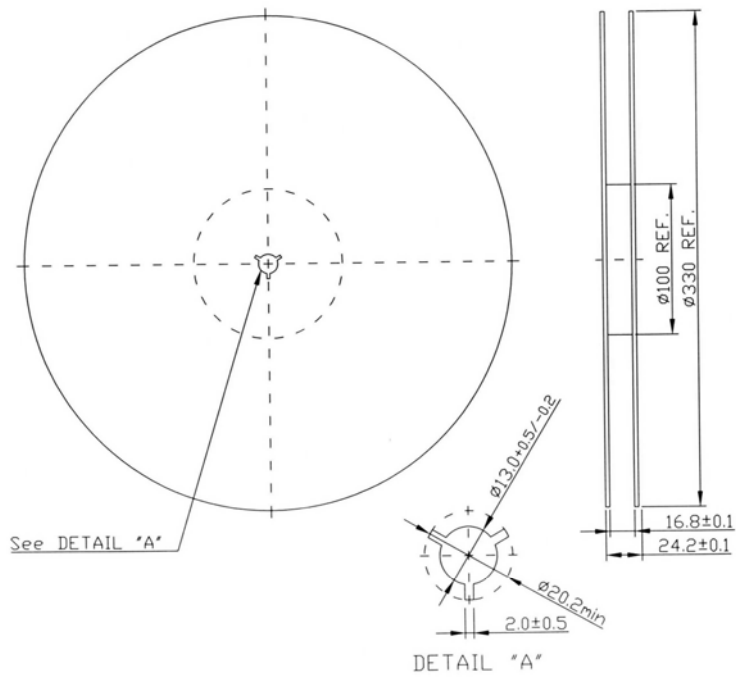
E. Frequency Characteristics :





F. PACKING:

1. REEL DIMENSION



2. TAPE DIMENSION

